



Oral History with Nellie Sewell,
Carbondale Area (1.1976)



Dominick Arcieri Oral History
Interview (101.1976)



Oral History with Evelyn Beatty
(102.1978)



Western Homemaker's Life And Work
(103.1977)



Dorothy Kittle Oral History (104.1977)



Oral History Will Minor and Lee
Warner (105.1976)



Coming From Nebraska To Fruita -
Oral History with Emma Nagel
(106.1977)



Oral History of Charles Edward
Thomas (107.1976)



Oral History of Tom and Helen
Williams (108.1978)



Medicine In Collbran (109.1976)



Oral History of Della Crider (111.1978)



Oral History of Wyatt Wood (113.1978)



2nd Oral History with Wyatt Wood
(114.1978)



Craig Aupperle Oral History
(116.1976)

Craig Aupperle Oral History
[Duplicate] (116.1976)



2nd Oral History with Alfred Flagg
(119.1977)



Wayne Aspinall Oral History
(120.1978)



Dr. Munro Oral History (122.1977)



Oral History of Karl and Nellie Linn
(123.1977)



Craig Aupperle Oral History - Charlie
Glass; Cattle Industry (125.1976)



Oral History Orville & Helen Altenbern
(126.1977)



Pearl Redmon Oral History (127.1978)



Oral History with Dorothy Beard
(128.1978)



Oral History with Armand De Beque
(129.1979)



Early De Beque (130.1977)



Early Grand Junction (131.1978)



Oral History with Jean and Benerita Urruty (134.1978)



Oral History with C. B. Aupperle (137.1976)



Oral History with Rufus Hirons (138.1977)

Oral History with Rufus Hirons [Duplicate] (138.19771)



Oral History of Pearl Randolph (139.1978)



Oral History of Gertrude McKay (140.1977)



Oral History with Willis and Lotus Blevins (141.1978)



Oral History of Winifred Bull (142.1977)

Oral History of Winifred Bull [Duplicate] (142.19771)



Oral History of Anna Foster (143.1978)



Oral History of Frank Jonick
(144.1978)



Oral History of Luella Morgan
(145.1978)



Oral History with Dr. Munro
(146.1978)



Oral History of Ruth Smith and Agnes
Wright (147.1978)



Oral History with Dr. Munro
(148.1978)



Oral History with Anna Alstatt
(149.1978)



Oral History with Lina Mae Biggs
(150.1977)



Oral History of Mary Corcoran
(152.1978)



Oral History of Nevada Burford
(153.1978)



School Memories (154.1977)



Oral History of Vern Wood (155.1977)



Oral History of Lois Saunders
(156.1978)



Panel on Glade Park (157.1978)



Mesa County Architecture (158.1978)



Program by Dan Roberts (159.1977)



Oral History with Bob Evans
(161.1978)



Oral History with W.B. Bruce Howard
(163.1978)



Oral History with Dudley Mitchell
(164.1978)



Oral History with Carl Forsman
(166.1978)



Oral History with Charlotte Barnes
(167.1978)



Life In Rifle, Colorado (168.1978)



Oral History of May Denton (169.1978)



Oral History of Minnie Foster
(170.1978)



Oral History of Myrtle Hetzel
(171.1978)



Orphan Girl's Life (172.1978)



Oral History with Florence Shambeau
(173.1978)



Oral History of Veone Christine Taylor
(174.1978)



Recalling Fruita (175.1978)



Oral History of Gracia Vogley
(176.1978)



Oral History with Alfrieda Stevenson
(177.1978)

Oral History with Alfrieda Stevenson
[Duplicate] (177.1978)



Oral History with Kenneth Thompson
(178.1977)



Oral History of Harold Shults
(179.1977)



Panel on Kannah Creek (180.1978)



Glade Park Oral History (183.1978)



Oral History with Darwin Burford
(184.1978)



Oral History of Dorothy Evans
(185.1978)



Brunk's Comedians And Tent Show
(186.1978)



Oral History of Lulu Kennon
(187.1978)



Weston & Nellie Massey Oral History
(188.1978)



Teaching & Ranch Life Oral History
(189.1978)



Jim Franklin Oral History (190.1978)



Debeque Ranching (192.1978)



Stockman's Experiences (193.1978)



Oral History Memories of Western
Slope Life (194.1978)



School Teaching (197.1978)

School Teaching [Duplicate]
(197.19781)



Men on vehicle (1979.111.53)



Photograph of 1948 Palisade Town Officials & Wayne Aspinall (1979.23.170)



Picking sack (1979.32.1)



The Colorado Fuel and Iron Company Scatter Tag (1979.37.1)



Peach Day Parade, 1948 (1979.57.1)



Oral History with C B Upperle (198.1975)



Photos of Western Colorado Energy Development (1980.109.1)



Voting Booth Canvas (1980.14.1)



Black and White photo of Biggs-Kurtz Hardware Store (1980.156.2)

Dr. Ligon Price Collection (1980.256.1)

Al Look Collection Correspondences (1981.115.1)

Al Look Collection Correspondences [Duplicate] (1981.115.12)

Misc. Documents (1981.115.15)

Misc. Documents [Duplicate]
(1981.115.151)

Correspondence (1981.115.19)

Correspondence [Duplicate]
(1981.115.191)

Correspondence , articles, clippings
and notes (1981.115.29)

Correspondence , articles, clippings
and notes [Duplicate] (1981.115.291)

Correspondence and manuscripts
(1981.115.32)

Correspondence and manuscripts
[Duplicate] (1981.115.321)

Correspondence Preston Walker
(1981.115.33)

Correspondence Preston Walker
[Duplicate] (1981.115.331)

Manuscripts and financials
(1981.115.34)

Manuscripts and financials [Duplicate]
(1981.115.341)

Correspondence between Ruth and
Harold Bryant (1981.115.42)

Correspondence between Ruth and Harold Bryant [Duplicate] (1981.115.421)

Correspondence and clippings (1981.115.5)

Doc Shores Letters (1981.115.54)

Doc Shores Letters [Duplicate] (1981.115.541)

Correspondence and clippings [Duplicate] (1981.115.57)



Wallpaper (1981.243.2)



Wallpaper (1981.243.3)



The Vigilante by Harold Bryant (1982.100.31)



Preston Walker (1982.135.10)



Jewelry Shop owner (1982.135.11)



Jewelry Shop owner, Ray (1982.135.14)



Helen and Forrest Carhartt on the Monument (1982.135.15)



Wes Carhartt on Main Street
(1982.135.16)



Highway built by CCC (1982.135.5)



Col. Booth and Helen Carhartt
(1982.135.6)



View of the Monument (1982.135.7)



Scene from the highway built by the
CCC (1982.135.8)



Rock formation on the Monument
(1982.135.9)

Pillbox Hat (1982.197.1)

Pillbox Hat [Duplicate] (1982.197.11)

Pillbox Hat [Duplicate] (1982.197.12)



Hat Box (1982.197.4)



Lest We Forget: A Short History of
Early Grand Valley, Colorado,
Originally Called Parachute, Colorado

Railroad Lantern (1982.37.1)



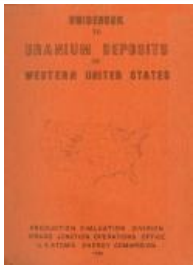
Dictating Machine (1983.162.1)



Collection Of Documents Regarding William J.S. Henderson And His Family (1983.66.2)

Collection Of Documents Regarding William J.S. Henderson And His Family [Duplicate] (1983.66.21)

Collection Of Documents Regarding William J.S. Henderson And His Family [Duplicate] (1983.66.22)



Letters, reports, articles, and other literary works relating to uranium, mining, medical fall out, and more.



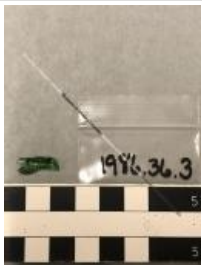
Navajo Woven Rug (1985.102.6)



A Canyon, Coal, and A Railroad: The Story of Carpenter, Colorado (1985.114.1)



Glass Fragments (1986.36.2)



Glass Fragment (1986.36.3)



Glass Jar Fragment (1986.36.4)



Kerosene Lamp Chimney Fragment (1986.36.5)



Stained Glass Fragment (1986.36.7)



Ina Dyer Oral History (199.1978)

Ina Dyer Oral History [Duplicate] (199.1978.1)



Photo of Galloping Goose train stopped at Trout Lake (1990.10.59)



Photo of Rio Grande Southern Railroad depot at Ridgeway (1990.10.60)



Photo of Galloping Goose railcars at depot in Placerville, Co (1990.10.61)



Photo of 16 unidentified individuals (1990.8.23)



Photo of unidentified individuals at bar (1990.8.26)



Xerox of Julia Harris's experience (1991.34.3)

Navajo Indian Reservation, Uranium, Mines (1992.102.1)

Significant Errors in Lisa Godfrey's Thesis on Calamity Mesa (1992.6.1)



First Assembly of God Church Plate (1995.102.1)



Schmidt Hardware Co. (1996.60.1)



History of the C.D. Smith Company
(1997.13.1)



Passenger train, Crested Butte
(1997.8.34)



Fruitvale High School (1998.1.3)



Sylvania Sun Gun Movie Light
(1998.17.8)



Wilburn Wood, 1948 (1998.38.48)



Scrapbook about McMullin Murder
(1999.26.2)



Al Look's Hat (1999.33.1)



John Otto And A Pioneer On Glade
Park (20.1976)



John Fritz Becker Oral History, Zelma
Parkes Oral History (200.1977)



AEC compound (2004.44.1004)



Manuels (2004.44.118)



John Otto (2004.44.849)



Cardiff School (2004.44.92)



Women's Conference (2006.1.559)

Women's Conference [Duplicate]
(2006.1.5591)

Women's Conference [Duplicate]
(2006.1.5592)



Rev. Oliver W. Jadwin (2006.1.560)

Rev. Oliver W. Jadwin [Duplicate]
(2006.1.5601)

Rev. Oliver W. Jadwin [Duplicate]
(2006.1.5602)



Five ladies in front of the church
(2006.1.562)

Five ladies in front of the church
[Duplicate] (2006.1.5621)

Five ladies in front of the church
[Duplicate] (2006.1.5622)



"Interesting Facts about Sugar"
(2006.43.4)



DOE employees (2008.24.16)



Bear at Lincoln Park Zoo (2008.28.2)



Chet Enstrom Oral History (201.1978)



Roy Maxson's Signature Card (2011.8.27)



Embroidered dress (2014.95.11)



YMCA Keychain and Key (2018.17.1)



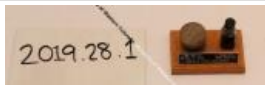
Photo of Gofreddi Orchard (2019.2.3)



Photo of cabin and bluffs (2019.2.34)



Photo of John Goffredi in Rapid Creek Orchard (2019.2.4)



Container, Ore (2019.28.1)



Brick from St. Joe Church (2019.65.1)



Trolley Tie (2019.65.2)



Rufos Hirons Oral History (202.1978)



GJ Post Cards (2020.38.1)



The Making of "One Bike" Opera (2021.22.1)



Exterior of the Benge's Shoe store (2021.24.11)



Benge's Stained Glass (2021.24.2)



Exterior of Benge's Shoestore (2021.24.6)



Benge's Shoe Store Interior (2021.24.7)



Exterior of Benge's Shoestore (2021.24.8)



Al Schiesswohl's Briefcase (2021.27.2)



Photo of Camel (2022.0.2)



Dean Studio Table (2022.3.1)



Dean Studio Child's Chair (2022.3.2)



Photo of Coach Bert Hilt (2022.66.78)



Photo of Principal Mr. James
(2022.66.79)



Ring (2023.30.19)



Portrait of Unidentified Woman
(2023.30.5)



Wayne Chiesman (2023.40.36)



Births and Marriages page from the
Butler Family Bible (2023.48.26)



Deaths and Memoranda page from the
Butler Family Bible (2023.48.27)



President Truman visiting Grand
Junction (2023.7.1)



Photo of crowd gathered to see
President Truman (2023.7.5)



Photo of President Truman visiting
Grand Junction (2023.7.6)



Oral History Charles and Catherine
Moore (203.1977)



Andrew Riddle Oral History (204.1978)



Arvid Muhr Oral History (208.1978)



Frosty Tilton Oral History (209.1978)



Marie Young Oral History (210.1979)



C.B. Aupperle Oral History (211.1979)



Reuben Pitts Oral History (212.1979)



Pavetti & Van Dyke Oral History
(213.1979)



Program on Folklore (215.1979)



Oral History with Jim Franklin
(216.1978)



Oral History with Gwen McKee
(217.1978)



Margaret Golden Oral History
(218.1978)



Irene Gramlich Oral History
(219.1979)



Grazing Service, Western Colorado
And Eastern Utah (22.1975)



Elizabeth McCullah Oral History
(220.1978)



Bunk Weimer Oral History (221.1979)



Lucille Mahannah Oral History
(222.1979)



Helen Wilson Oral History (224.1979)



Edward Martin Oral History
(225.1979)



Oral History Eda Musser (226.1978)



Jean Page Oral History (227.1979)



Jean Urruty Oral History (228.1978)



Dale Luke Oral History (229.1979)



Joe Fox Oral History (230.1979)



Frank Wright Oral History (231.1978)



Oral History Lizzie Anderson
(233.1979)



Bill Raber Oral History (234.1979)



Marie Young Oral History (237.1979)



Joel & Jenny Brewster Oral History
(238.1978)



J.W. Latham Oral History (239.1979)



Dr. Addie Maynard Oral History
(240.1978)



Jean Page Oral History (241.1979)



WJ Pray Oral History (242.1979)



Harvey Smith Oral History (243.1979)



Lacy Tribby Oral History (244.1978)



Marie Young Oral History (245.1979)



Art Brodak Oral History (246.1979)



Ethel Hotchkiss Oral History
(247.1979)



Oral History Ellsworth Guy (248.1979)



A. L. Guerrie Oral History (249.1979)



Grand Junction Depression (25.1971)



Daisy Green Oral History (250.1979)



Alice Olsen Oral History (251.1979)



Lester Starr Oral History (252.1979)



Merle Winters Oral History (253.1978)



Armand De Beque Oral History
(254.1979)



Bill Nelson Oral History (255.1981)



Wayne Farley Oral History (256.1979)



Oral History of Morgan Goss
(257.1979)



Anna McGinley and Mae Plunkett Oral
History (258.1979)



Howard Hafey Oral History (259.1979)



Growing Fruit In Grand Junction
(26.1976)



Winifred McCaig Oral History
(260.1978)



Lee Serna Oral History (261.1979)



Bernice Carney Oral History
(262.1979)



Grace Kistler Oral History (263.1979)



Rudolph Seibert Oral History
(264.1979)



Frank Wright Oral History (265.1979)



Arthur Tufly Oral History (266.1979)



Anna McGinley & May Plunkett Oral
History (267.1979)



Marie Edwards Oral History
(269.1979)



Carl Gesberg Oral History (270.1979)

Carl Gesberg Oral History [Duplicate]
(270.19791)



Elizabeth Kisher Oral History
(271.1979)



Fred Powell Oral History (272.1979)



Connor Shephard Oral History
(273.1979)



Hubbard & Livingston Oral History
(274.1979)



Limberg Oral History (275.1979)



Thomas Wedell Oral History
(276.1989)



Enstrom Candy Company History
(2763.2016)



Oral History of Anna Gallegos
(277.1979)



Oscar Jaynes Oral History (278.1979)



Eugene Rowley Oral History
(279.1979)



Mary Warren Oral History (280.1989)



Alfred Bigum Oral History (281.1979)



Biglin Oral History (283.1979)



Craig & Devine Oral History
(284.1979)



Edna Brenton Oral History (285.1979)



June and Levi Morse Oral History
(286.1979)



Gateway History & Cowboy Poetry
(287.1979)



Lampert Oral History (288.1979)



Louis Balliger Oral History (289.1979)



Walter Gaddy Oral History (290.1979)



Sarah Gowen Oral History (291.1979)



Shults Oral History (292.1979)



Dudley Mitchell Oral History
(293.1979)



Dr. Matteroli Oral History (294.1979)



Lee Toothaker Oral History (295.1979)



C. H. Buttolph Oral History (296.1979)



Elsie Cockrell Oral History (297.1979)



Virgil & Edithe Hickman Oral History
(298.1979)



Dudley Mitchell Oral History
(299.1979)



Interview with Lucy Ela: Glade Park
And John Otto (3.1975)



Emma Nagel Oral History (300.1979)



Oral History Bill Raber (301.1979)



Oral History of Dudley Mitchell
(303.1978)



Oral History of Dudley Mitchell
(304.1978)



Oral History of Charles Smelzer
(306.1979)



Oral History of Margaret Stump
(307.1980)



Oral History of Rudy and Fannie Ruth
Susman (308.1980)



CCC Camps On The Monument
(31.1976)



Program on Fruita and Interurban
(310.1980)



Oral History with Gilbert Baylis
(311.1972.1)



Oral History with Mary Giblin
(311.1972.2)



Bob Grant Oral History (311.1972.3)



Oral History with Clem Goettelman
(311.1972.4)



Oral History with Al Look (311.1972.5)



Oral History with William Nelson
(311.1972.6)



Oral History with Mary Price
(311.1972.7)



Oral History with Mildred Shaw
(311.1972.8)



Oral History with Josephine Biggs
(312.1980)



Oral History of Katherine Fuoco
(313.1979)



Oral History with Ruth Hoffman
(314.1980)



Oral History with Priscilla Broderson
(316.1980)



Oral History of Sarah Mahannah
(317.1980)



Oral History with Laura Foster
(318.1980)



Oral History with Len & Violet
Haseman (319.1983)



Oral History with Ernest Hicks
(320.1980)



Oral History Harry Godby (321.1980)

Oral History Harry Godby [Duplicate]
(321.19801)



Oral History of Carl Gesberg
(322.1980)



Oral History with Oscar Jaynes Jr.
(323.1980)



Oral History with R.B. Kearn
(324.1980)



Oral History with Harold Booth
(325.1980)



Oral History of Mary & Gilbert Gordon
(327.1980)



Oral History with Emma Nagel
(328.1980)



Meeting of Last Squad Club
(329.1980)



Dairy Industry In Grand Junction
(33.1975)



Oral History of Jene Hicks (330.1980)



Oral History with Glenn McFall
(331.1980)

Oral History with Glenn McFall
[Duplicate] (331.19801)



Harry Godby Oral History (332.1980)



Oral History with Madge Davis
(335.1980)



Oral History with Glenn McFall
(337.1980)



William Cunningham Oral History
(338.1980)



Harold Zimmerman Oral History
(339.1980)



Oral History Ella Kinterknecht
(340.1980)



Oral History with Glenn McFall
(341.1980)



Oral History with Glenn McFall
(342.1980)



Howard Shults Oral History
(344.1980)



Ica Click Oral History (345.1980)



Charles Lundy Oral History (346.1979)



Frank Hennes Oral History (347.1980)



Charles Thomas Oral History
(348.1980)



Virgil & Edithe Hickman Oral History
(349.1980)



Asunta Mendicelli Oral History
(350.1980)



Jennie Dixon Oral History (351.1980)



Harry Gardner Oral History (352.1980)



Thatcher Shaw Oral History
(356.1980)



Joseph Egger Oral History (357.1980)



Minnie Roberts Oral History
(358.1980)



Asunta Mendicelli Oral History
(359.1980)



Fred Hurlburt Oral History (360.1980)



Gertrude Rader Oral History
(361.1980)



Emma Nicolay Oral History (362.1980)



Julia Harris Oral History (363.1980)



Nellie Robins Oral History (364.1980)



Alice Johnson Oral History (365.1978)



Dorothy Littler Oral History
(366.1980)



Bertha Schlegel Oral History
(368.1980)



Ray Bernal Oral History (369.1980)



Ella Kinterknecht & Lew Parcell Oral
History (370.1980)

Henry Snyder Oral History (371.1979)



Roy McCoy Oral History (372.1981)



Financial Institutions of Mesa County
(375.1980)



Loudene Humeston Oral History
(377.1978)



Earl & Ella Foster Oral History
(379.1980)



Immigrant From Basque Country
(38.1975)



Program on Railroads (381.1980)



Program on Architecture (382.1980)



Oral History Mary A. Cox (385.1980)



John Collier Oral History (386.1980)



John Hart Oral History (387.1980)



Marie Spomer Oral History (388.1980)



Oral History Henry Spomer (389.1980)



Mary Plaisted Oral History (390.1980)



Harriet Johnson Oral History
(391.1980)

Harriet Johnson Oral History
[Duplicate] (391.19801)



Anna Clark Oral History (392.1980)



Henry Brunk Oral History (394.1980)

Henry Brunk Oral History (395.1980)



John Collier Oral History (396.1980)



Grace Hill Wade Oral History
(397.1980)

Grace Hill Wade Oral History
[Duplicate] (397.19801)



Kate Wills Oral History (398.1980)



Mary Rait Oral History (399.1980)



Farming And Ranching On Glade Park
(40.1976)



Julia Harris Oral History (400.1980)



Fruita - Early Settlers (41.1975)



Palisade History And Fruit Growing
(43.1977)



Development Of Grand Valley
(Parachute) (44.1977)



Early Day Social Worker (45.1977)

Helen Johnson Oral History (451.1982)

Abe Karp Oral History (453.1982)



Helen Johnson Oral History (457.1982)

Oral History (458.1981)



History of Jaynes And Borschell
Families (46.1978)



Armand De Beque Oral History
(462.1981)



Program on Early Entertainment
(463.1981)



Wanda and Paul Brechler Oral History
(464.1981)



Gertrude Rader Oral History
(465.1981)



Role of the Dedicated Amateur in
Archaeology (466.1982)



Program on the Collbran and Plateau
Valley Area (469.1981)



Oral History with Bailey & Shaw
(471.1981)



Walter Simineo Oral History
(472.1981)



Wayne Aspinall Oral History
(473.1981)



Carl Dewey Oral History (474.1981)



Albert Phillips Jr. Oral History
(475.1981)



William Whatley Oral History
(476.1982)



Ruth Tilton Oral History (477.1982)



Al Look Oral History (479.1981)



Early Palisade (48.1977)



Jo Ferguson Oral History (480.1982)



Emma Conner Oral History (481.1982)



Charlotte Claar Oral History
(482.1980)



Jo Ferguson Oral History (483.1982)



Roy Dinkins Oral History (484.1981)



James Franklin Oral History
(485.1982)



Bruce Howard Oral History (486.1982)



Merian & Burt Rosenthal and Hershel Sedalnick Oral History (488.1981)



Rena Nisbet Oral History (489.1982)



Early Black Residents - Oral History with Josephine Dickey (49.1977)



A. Perry Christensen Oral History (490.1982)



Ruby Gaither Oral History (491.1982)



Program on agriculture, Eclipse book (493.1982)



Program on George Crawford (494.1982)



100 Years of Mesa County Government - Panel Presentation (495.1982)



Al Look Oral History (498.1982)



Fruit Grower And Cattle Man (50.1977)



Cecilia Cardman Oral History (501.1982)



Essie Aspinall Oral History (502.1982)



Sylvia Ruland Oral History (508.1982)



Early Homesteading And Teaching
(51.1977)



Sterling Smith Oral History (510.1982)



Julia Harris Oral History (511.1982)



Gertie Rader Oral History (514.1982)

Wilbur & Mildred Downey Oral History
(515.1982)



Don Burgess Oral History (518.1982)



Hazel Murphey Oral History
(519.1982)



Homesteading And Family Life
(52.1977)

Marie Bittle Oral History (522.1982)

Alice Clinton Oral History (523.1982)

Eugene Perry Oral History (524.1982)

Thomas Charles & Emma Nagel Oral History (525.1982)



Ann Stokes Oral History (526.1982)



Bessie Millholland Oral History (527.1982)



Oral History with Josephine Dickey (529.1981)



Development Of A Cowboy (53.1977)



Les Kittle Oral History (530.1980)



Ruth Echternach Oral History (531.1982)



Richard Williams Oral History (532.1982)



Dottie Lamm to Women's Network Centennial Luncheon (533.1982)



Molly Stucker Oral History (536.2002)



Erwin Ormsbee & Dick Williams Oral History (537.1981)



Marion Echternach Oral History (538.1981)



Al Look Oral History (539.1981)



Influential People And Leaders
(54.1976)



Leta Atchison Oral History (540.1982)



Harry Talbot Oral History (542.1982)



Lowell Laycock Oral History
(544.1982)



Al Look Oral History (545.1982)



Rosemary Kitson Oral History
(546.1982)



Wayne Aspinall Oral History
(548.1982)



Leroy and Sharon Gardner Oral
History (549.1982)



Beginnings Of The Town (55.1977)



Kermit Brubaker Oral History
(550.1982)



Grand Junction's First Radio &
Television Stations (57.1975)



Sheep & Cattle Ranching in Cisco
(58.1977)



Early Sheep And Cattle Experiences
(59.1977)



Pioneer Educator And Civic Leader
(60.1977)



Reminiscences of Mesa County
Doctors (64.1971)



Early Whitewater (66.1977)



Homestead In Horsethief
Canyon/Plateau Valley (67.1977)



Prominent Homemaker And Educator
(68.1977)



Beginnings Of Grand Junction
(69.1977)

Beginnings Of Grand Junction
[Duplicate] (69.1977)



Early Stockman And Businessman
(70.1977)



Farming And Homemaking (71.1977)



Oral History of Russell and Lillian
Paige (72.1977)



Early Life In Fruita (73.1978)



Italian Immigrants in Fruita (75.1977)



Early Medicine In Telluride (76.1977)



Public Nursing (79.1977)



Class of 1927 Fruita Union High School (81.1977)



Early Whitewater Ranch Life (85.1977)



Musician; Sawmill Operator From Delta (86.1977)



Early Fruitgrower (87.1977)



Early Grd. Jct. Citizens And Businesses (89.1977)



A Teacher's Early Life And Friendships (98.1977)



Red Velvet Dress (C898.1)



Boraxo cleaner can (CU2023.12.1)



Brillo cleaner box (CU2023.12.2)



Gene Autry Cap Gun (D2011.5.67)



Tooled Leather Sandals (D289)



Shoes, Ladies (E249G)



Jacket & Blouse (E90)



John C. Page Portrait (F538)



Brown Pillbox Hat (H745)



Dress (X44)