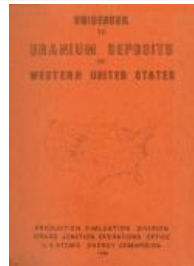


AEC Mining Tours, Geological Society
Directory (1983.177.1)



Letters, reports, articles, and other
literary works relating to uranium,
mining, medical fall out, and more.



Rehab Challenge Cup (1985.106.1)



"Moon of Birth of Calves" (1985.131.4)



"Moon of Yellow Leaves" (1985.131.9)

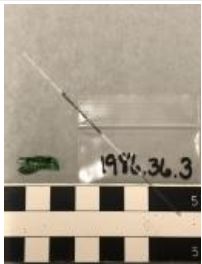


Juco Pin (1985.16.14)

Grand Valley Named, Geologic Survey,
Note Judy Prosser, Manhattan Project
(1985.74.1)



Glass Fragments (1986.36.2)



Glass Fragment (1986.36.3)



Glass Jar Fragment (1986.36.4)



Kerosene Lamp Chimney Fragment
(1986.36.5)



Stained Glass Fragment (1986.36.7)

AEC, DOE, Mill Tailings (1987.20.1)



Photo of snow covered equipment above road (1987.26.13)



Photo of Rapid Creek orchard (1987.26.14)



Photo of Ute Water Plant with surrounding landscape (1987.26.15)



Photo of Harlow Ranch (1987.26.16)



Photo of Lloyd Ranch winter landscape (1987.26.17)



Photo of J.P. Harlow's tombstone, close up (1987.26.18)



Photo of J.P. Harlow's tombstone (1987.26.19)



Photo of Rapid Creek (1987.26.20)



Photo of Rapid Creek from State Bridge (1987.26.21)



Photo of Harlow's rock wall (1987.26.22)



Photo of Harlow's wall and Marolt ranch (1987.26.23)



Photo of winter landscape
(1987.26.24)



Photo of Harlow's rock wall
(1987.26.25)



Photo of Harlow Mine and I-70 bridge
(1987.26.26)



Photo of Harlow Mine and I-70 bridge
entrance (1987.26.27)



Photo of J.P. Harlow's stone house
(1987.26.28)



Photo of Floryancic's residential home
build (1987.26.29)



Photo of Stokes house (1987.26.30)



Photo of Jenkins Ranch and packing
shed (1987.26.31)



Photo of the Kladdock ranch shed
(1987.26.32)



Photo of Goffredi ranch (1987.26.33)



Photo of Goffredi Ranch with horse
corral (1987.26.34)



Photo of hillside with remnants of
loading ramp (1987.26.35)



Photo of Kladdock ranch home and packing shed (1987.26.36)



Photo of Marolt Ranch (1987.26.37)



Photo of the Pyeatt house (1987.26.38)



Photo of the Pyeatt barn (1987.26.39)



Photo of the Smith (Vernon) ranch (1987.26.40)



Photo of Marolt (Miller) ranch (1987.26.41)



Photo of Pyeatt (Voytilla) ranch and fields (1987.26.42)



Photo of the "stagecoach" trail (1987.26.44)



Photo of Grand Mesa (1987.26.45)



Photo of Blue Flame Mine remnants (1987.26.46)



Photo of structure at Winger Mine (1987.26.47)



Photo of Winger Mine and structure (1987.26.48)



Photo of Mautz house (1987.26.49)



Photo of road to Mautz ranch with packing shed (1987.26.50)



Photo of Crawford Ditch with person (1987.26.51)



Photo of Rapid Creek ice pond remnants (1987.26.52)



Photo of Crawford Ditch (1987.26.53)



Photo of the Orchard Mesa Canal (1987.26.54)



Photo of The State Bridge crossing a river (1987.26.55)



Photo of shower rock area (1987.26.56)



Photo of Jenkins Ranch (1987.26.57)

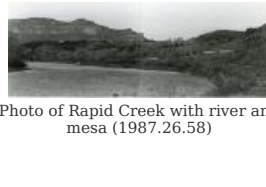


Photo of Rapid Creek with river and mesa (1987.26.58)



Photo of winter landscape (1987.26.60)



Photo of Remaining Winger Mine Building (1987.38.1)



B&W photo of a piece of equipment partially covered in snow above a road. (1987.38.10)



B&W photo of Lloyd Ranch - a wintry landscape in the lowlands with trees and mountains. (1987.38.12)



Photo of Grand Mesa from Rapid Creek (1987.38.13)



B&W photo of a wintry scene at the Crawford Ditch and person standing near ditch. (1987.38.14)



B&W photo of a wintry scene with bushes, trees, a steep side hill. (1987.38.16)



B&W photo of Winger Mine tunnel and structure in winter landscape. (1987.38.2)



B&W photo of J.P. Hawlow's stone house on a hillside (1987.38.20)



B&W photo of the Goffredi Ranch in winter with several buildings, fencing at base of mountain. (1987.38.5)



Photo of Harlow Ranch from Eastern End of Farm (1987.38.7)



B&W photo of winter landscape at Rapid Creek (1987.38.9)

Union Mines Development reports (1987.72.1)



Photo of Fruita Paleontological Site (1990.9.13)



Photo of Rabbit Valley (1990.9.14)

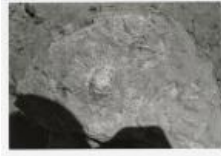


Photo of unidentified fossil (1990.9.15)



Photo of unidentified fossil (1990.9.16)



Photo of Earthwatch crew working (1990.9.17)



Photo of Crocodilian fossil (1990.9.18)



Photo of Crocodilian fossil (1990.9.19)



Photo of Crocodilian fossil (1990.9.20)



Photo of Earthwatch crew (1990.9.21)



Photo of Earthwatch crew (1990.9.22)



Xerox of Julia Harris's experience (1991.34.3)

Geology Mineral Deposits, Survey, Map, Uranium, Radium, (1991.84.1)

Navajo Indian Reservation, Uranium, Mines (1992.102.1)



Colorado Ski Country Magazine
(1993.85.2)



Cross Orchards Donation Kettle
(1994.0.26)



History of the C.D. Smith Company
(1997.13.1)



Peach Committee Meeting at PAC
Office (1997.55.36)



Dr. Moore's cane (1999.23.1)



Bank of Clifton (2004.44.127)



Sundstrand Celebration (2004.44.149)



cattle drive (2004.44.154)



Bunkhouse, Cross Orchards
(2004.44.155)



Animatronic Triceratops (2004.44.186)



Dalby Wendland & Co Staff
(2004.44.287)



Cardiff School (2004.44.92)



Mark Achen at table (2006.123.3617)



Mark Achen (2006.123.3618)



Jody Ahrens and Jody Rector
(2006.123.3680)



Maxine Albers (2006.123.3684)



Dara-Lynn Allmacher (2006.123.3713)



Sister Mary Aloys and Lloyd Bowles
(2006.123.3716)



Carl Anderson (2006.123.3723)



Carl Anderson with grandson
(2006.123.3725)



Carl Anderson with grandson
(2006.123.3726)



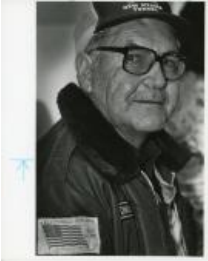
Don Anderson (2006.123.3729)



Dr. Tom Anderson (2006.123.3749)



Charles Ansbacher (2006.123.3756)



Delurdes "Del" Archuleta
(2006.123.3762)



Delurdes "Del" Archuleta
(2006.123.3763)



Delurdes "Del" Archuleta
(2006.123.3764)



William Armstrong (2006.123.3822)



William Armstrong (2006.123.3828)



William Armstrong (2006.123.3831)



Gerald Ashby (2006.123.3845)



Gary Ashley (2006.123.3855)



Owen and Dick Aspinall
(2006.123.3909)



Jim Austin (2006.123.3945)



Richard Baca (2006.123.3948)



Betty Bacon (2006.123.3952)



Leo Baldwin (2006.123.4003)



Leo Baldwin (2006.123.4004)



Garland Bare (2006.123.4009)



Sam Baseler (2006.123.4016)

Sam Baseler [Duplicate]
(2006.123.40161)

Sam Baseler [Duplicate]
(2006.123.40162)



Teresa Miller (2006.123.4017)

Teresa Miller [Duplicate]
(2006.123.40171)

Teresa Miller [Duplicate]
(2006.123.40172)



Brenda Boone (2006.123.4018)

Brenda Boone [Duplicate]
(2006.123.40181)

Brenda Boone [Duplicate]
(2006.123.40182)



Susan Henson (2006.123.4019)

Susan Henson [Duplicate]
(2006.123.40191)

Susan Henson [Duplicate]
(2006.123.40192)



Sam Baseler students (2006.123.4020)

Sam Baseler students [Duplicate]
(2006.123.40201)

Sam Baseler students [Duplicate]
(2006.123.40202)



Sister Marianna Bauder
(2006.123.4026)



Sister Marianna Bauder
(2006.123.4027)



Sister Marianna Bauder
(2006.123.4028)



Stephen Be (2006.123.4033)



Camelia Berry (2006.123.4083)



Camelia Berry (2006.123.4085)



David Berry (2006.123.4090)



David Berry (2006.123.4091)



Jack Berry (2006.123.4099)



Bill Bever (2006.123.4110)



Peg Thomas, mother of Gerald Biber (2006.123.4111)



Peg Thomas, mother of Gerald Biber (2006.123.4112)



Telegram to Peg Thomas, mother of Gerald Biber (2006.123.4113)



Clinton and Lina May Biggs (2006.123.4120)



Carl Bledsoe (2006.123.4135)



Carl Bledsoe (2006.123.4136)



Robert G. Boucher (2006.123.4202)



Robert G. Boucher and Paul Trayer (2006.123.4203)



Robert G. Boucher (2006.123.4204)



Richard Cardenas photograph
(2006.123.4469)



Helen Carmack (2006.123.4475)



Tess Carmichael (2006.123.4478)



Ed Carpenter (2006.123.4482)



Blake Chambliss (2006.123.4539)



Darden Chambliss (2006.123.4540)



Darden Chambliss (2006.123.4541)



Fred Chandler (2006.123.4543)



Pastor Don Cheyney (2006.123.4553)



Major General Richard Christiansen
(2006.123.4564)



Connie Clark (2006.123.4578)



Larry Clever (2006.123.4606)



Larry and Connie Clever
(2006.123.4607)



Craig Coburn (2006.123.4613)



Howard Coe (2006.123.4614)



Daniel J. Collins (2006.123.4623)



Daniel J. Collins (2006.123.4624)



Daniel J. Collins (2006.123.4625)



Joe Wilson and Linda Conger
(2006.123.4634)



Greg Cope (2006.123.4674)



Tom Corcoran (2006.123.4676)



Tom Corcoran (2006.123.4677)



Tom Corcoran (2006.123.4678)



Tom Corcoran (2006.123.4680)



Tom Corcoran (2006.123.4682)



Billie Cornelison (2006.123.4686)



Stephen Cotton (2006.123.4697)



Anita Fox (2006.123.4699)



Jay Cozza (2006.123.4707)



Jay Cozza (2006.123.4708)



Dr. Jim Crowell (2006.123.4717)



Maxine Curley (2006.123.4720)



Maxine Curley (2006.123.4721)



Maxine Curley (2006.123.4722)



Bruce Currier (2006.123.4726)



Bruce Currier (2006.123.4727)



Bruce Currier (2006.123.4728)



Dan Danforth (2006.123.4731)



Anita Davenport (2006.123.4752)



Anita Davenport (2006.123.4753)



Anita Davenport (2006.123.4754)



Denise Davenport (2006.123.4755)



Denise Davenport (2006.123.4756)



Denise Davenport (2006.123.4757)



Denise Davenport (2006.123.4758)



Garry Davis (2006.123.4782)



Michael Davis (2006.123.4786)



Shari Dawson (2006.123.4791)



Robert Deal (2006.123.4794)



Peter Decker (2006.123.4826)



Michael Degraw (2006.123.4833)



Bill Denny (2006.123.4844)



Ken Devero (2006.123.4853)



Ken Devero (2006.123.4854)



Sgt. Steve Dibsie (2006.123.4857)



Steve Dibsie (2006.123.4859)



Steve Dibsie (2006.123.4861)



Dick Dickerson (2006.123.4864)



Pam Dickey (2006.123.4865)



Dan Dillworth (2006.123.4871)



Todd Dixon (2006.123.4876)



Wes Dixon (2006.123.4877)



Keith Dixon (2006.123.4883)



Color portrait of Judith Lauren Arriza Wing (2018.15.17)



Photo of bridge by Rapid Creek (2019.2.61)



Brick from St. Joe Church (2019.65.1)



Trolley Tie (2019.65.2)



Jemez Pueblo Wedding Vase (2021.10.16)



The Making of "One Bike" Opera (2021.22.1)



Exterior of the Benge's Shoe store (2021.24.11)



Benge's Stained Glass (2021.24.2)



Exterior of Benge's Shoestore
(2021.24.6)



Benge's Shoe Store Interior
(2021.24.7)



Exterior of Benge's Shoestore
(2021.24.8)



GJHS Class Reunion Magnet
(2022.66.3)

GJHS Class Reunion Magnet
[Duplicate] (2022.66.31)

GJHS Class Reunion Magnet
[Duplicate] (2022.66.32)



Natural Dye Chart (2022.80.1)



Dog Tag (2023.30.15)



Dog Tag (2023.30.16)



Ring (2023.30.19)



Army Jacket (2023.30.29)



Oral History Program with the Ivancie
Family -- Wine Industry (2329.2005)



Oral History of Forrest Luke
(2615.2007)



Enstrom Candy Company History
(2763.2016)



Mary Warren Oral History (280.1989)



Molly Stucker Oral History (536.2002)



Union Depot (F582.7)