



**Allosaurus sp. (4234)**



**Allosaurus fragilis (4267)**



**Camarasaurus sp. (4303)**



**Allosaurus sp. (4305)**



**Allosaurus sp. (4313)**



**MWC5008 (5008)**



**Ceratosaurus sp. (5011)**



**Allosaurus sp. (5014)**



**Allosaurus sp. (5024)**



**Allosaurus sp. (5025)**



**Allosaurus sp. (5028)**



**Allosaurus sp. (5029)**



**Allosaurus sp. (5030)**

---



**MWC5031 (5031)**

---



**Allosaurus sp. (5032)**

---



**Allosaurus sp. (5035)**

---



**Allosaurus sp. (5036)**

---



**Allosaurus sp. (5038)**

---



**Apatosaurus sp. (5050)**

---



**Camarasaurus sp. (5051)**

---



**Sauropoda indet. (5062)**

---



**Theropoda indet. (5064)**

---



**Theropoda indet. (5065)**

---



**Allosaurus fragilis (5068)**

---



**Sauropoda indet. (5071)**

---



**Apatosaurus sp. (5072)**

---



**Sauropoda indet. (5074)**

---



**Allosaurus fragilis (5075)**

---



**MWC5082 (5082)**

---



**Apatosaurus sp. (5085)**

---



**Sauropoda indet. (5090)**

---



**Allosaurus sp. (5092)**

---



**MWC5093 (5093)**

---



**Apatosaurus sp. (5095)**

---



**MWC5097 (5097)**

---



**Allosaurus fragilis (5098)**

---



**Allosaurus fragilis (5101)**

---



**Allosaurus fragilis (5102)**

---



**Allosaurus fragilis (5103)**

---



**Sauropoda indet. (5107)**

---



**Diplodocidae (5115)**

---



**Allosaurus fragilis (5116)**

---



**Allosaurus fragilis (5117)**

---



**Camarasaurus sp. (5118)**

---



**Allosaurus sp. (5124)**

---



**Glyptops sp. (5164)**

---



**Goniopholis sp. (5165)**

---



**Mesadactylus (5173)**

---



**Diplodocidae indet. (5179)**

---



**MWC5180 (5180)**

---



**Allosaurus sp. (5182)**

---



**Allosaurus fragilis (5185)**

---



**Allosaurus sp. (5187)**

---



**Sauropoda indet. (5188)**

---



**Theropoda indet. (5190)**

---



**Allosaurus sp. (5194)**

---



**Allosaurus sp. (5195)**

---



**Sauropoda indet. (5208)**

---



**Sauropoda indet. (5209)**

---



**Sauropoda indet. (5210)**

---



**Allosauridae indet. (5212)**

---



**Allosaurus sp. (5213)**

---



**Reptilia indet. (5214)**

---



**Camarasaurus sp. (5215)**

---



**Theropoda indet. (5216)**

---



**Reptilia indet. (5218)**

---



**Reptilia indet. (5219)**

---



**Reptilia indet. (5220)**

---



**Allosaurus fragilis (5293)**

---



**Allosaurus fragilis (5296)**

---



**Allosaurus fragilis (5308)**

---



**Allosaurus sp. (5310)**

---



**Allosaurus sp. (5314)**

---



**Allosaurus fragilis (5318)**

---



**Allosaurus fragilis (5319)**

---



**Allosaurus fragilis (5322)**

---



**Apatosaurus sp. (5325)**

---



**Allosaurus fragilis (5326)**

---



**Diplodocidae indet. (5327)**

---



**Diplodocidae indet. (5328)**

---



**Allosaurus fragilis (5329)**

---



**Camarasaurus sp. (5330)**

---



**Sauropoda indet. (5331)**

---



**Diplodocus? sp. (5332)**

---



**Allosaurus fragilis (5336)**

---



**Allosaurus fragilis (5338)**

---



**Allosaurus fragilis (5340)**

---



**Allosaurus fragilis (5344)**

---



**Theropoda indet. (5348)**

---



**Allosaurus fragilis (5349)**

---



**Allosaurus sp. (5350)**

---



**Allosaurus fragilis (5353)**

---



**Allosaurus sp. (5440)**

---



**Allosaurus sp. (5441)**

---



**Camarasaurus sp. (5442)**

---



**Allosaurus sp. (5445)**

---





**Apatosaurus sp. (5446)**

---



**Allosaurus fragilis (5447)**

---



**Allosaurus sp. (5461)**

---



**Allosaurus sp. (5463)**

---



**Allosaurus fragilis (5475)**

---



**Diplodocidae (5476)**

---



**Allosaurus sp. (5478)**

---



**Allosaurus fragilis (5489)**

---



**Allosaurus sp. (5491)**

---



**Allosaurus sp. (5492)**

---



**Allosaurus sp. (5498)**

---



**Allosaurus sp. (5499)**

---



**Allosaurus sp. (5526)**

---



**Allosaurus sp. (5536)**

---



**MWC 5537 (5537)**

---



**Sauropoda indet. (5542)**

---



**Sauropoda indet. (5544)**

---



**Sauropoda? indet. (5546)**

---



**Sauropoda indet. (5548)**

---



**Sauropoda indet. (5550)**

---



**Sauropoda indet. (5551)**

---



**Sauropoda indet. (5558)**

---



**Sauropoda indet. (5561)**

---



**Allosaurus sp. (5563)**

---



**Theropoda indet. (5571)**

---



**Othnielia sp. (5632)**

---



**Dinosauria? indet. (5633)**

---



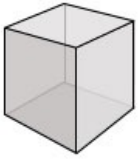
**Othnielia sp. (5634)**

---



**Arthropoda? indet. (5640)**

---



**Apatosaurus sp. (5648)**

---



**Allosaurus sp. (5650)**

---



**Sauropoda indet. (5651)**

---



**Sauropoda indet. (5656)**

---



**Sauropoda indet. (5661)**

---



**Sauropoda indet. (5662)**

---



**Sauropoda indet. (5671)**

---



**Allosaurus sp. (5673)**

---



**Sauropoda indet. (5677)**

---



**Sauropoda indet. (5678)**

---



**Sauropoda indet. (5679)**

---



**Apatosaurus sp. (5698)**

---



**Sauropoda indet. (5702)**

---



**Theropoda indet. (5707)**

---



**Allosaurus sp. (5709)**

---



**Sauropoda indet. (5711)**

---



**Sauropoda indet. (5712)**

---



**Diplodocidae (5713)**

---



**Allosaurus sp. (5715)**



**Diplodocidae indet. (5716)**



**Camarasaurus sp. (5719)**



**Sauropoda indet. (5721)**



**Allosaurus sp. (5722)**



**Apatosaurus sp. (5723)**



**Docodon victor (5727)**



**Pterosauria? indet. (5729)**



**Mesadactylus? sp. (5730)**



**Cteniogenys antiquus (5750)**



**Reptilia indet. (5773)**



**Reptilia indet. (5774)**



**Actinopterygii indet. (5775)**



**Reptilia? indet. (5776)**



**Amphibia? indet. (5777)**



**Vertebrata indet. (5778)**



**Actinopterygii indet. (5779)**



**Dinochelys whitei (5780)**



**Dinochelys? sp. (5781)**



**Reptilia? indet. (5782)**



**Chelonia indet. (5783)**



**Sauropoda indet. (5784)**



**Dinosauria indet. (5785)**



**Chelonia indet. (5786)**



**Chelonia indet. (5787)**

---



**Reptilia? indet. (5788)**

---



**Reptilia? indet. (5789)**

---



**Theropoda indet. (5790)**

---



**Vertebrata indet. (5791)**

---



**Caudata indet. (5792)**

---



**Vertebrata indet. (5793)**

---



**Goniopholididae? indet. (5794)**

---



**Crocodylia? indet. (5795)**

---



**Reptilia indet. (5796)**

---



**Dinochelys? sp. (5797)**

---



**Chelonia indet. (5798)**

---



**Othnielia? sp. (5799)**

---



**Goniopholididae? indet. (5800)**

---



**Reptilia? indet. (5801)**

---



**Chelonia? indet. (5802)**

---



**Reptilia? indet. (5803)**

---



**Glyptops sp. (5804)**

---



**Reptilia? indet. (5805)**

---



**Actinopterygii indet. (5806)**

---



**Pterosauria? indet. (5807)**

---



**Reptilia? indet. (5808)**

---



**Pterosauria? indet. (5809)**

---



**Theropoda indet. (5810)**

---





**Diplodocidae indet. (5811)**

---



**Reptilia indet. (5812)**

---



**Goniopholididae indet. (5813)**

---



**Actinopterygii indet. (5814)**

---



**Reptilia indet. (5815)**

---



**Mammalia indet. (5816)**

---



**Opisthias rarus (5824)**

---



**Allosaurus sp. (5831)**

---



**Allosaurus sp. (5832)**

---



**Allosaurus sp. (5834)**

---



**Diplodocidae (5837)**

---



**Diplodocidae indet. (5839)**

---



**Saurischia indet. (5841)**

---



**Diplodocidae indet. (5842)**

---



**Dinochelys whitei (5856)**

---



**Chelonia? indet. (5857)**

---



**Reptilia? indet. (5858)**

---



**Actinopterygii indet. (5859)**

---



**Mammalia? indet. (5860)**

---



**Vertebrata indet. (5861)**

---



**Chelonia? indet. (5862)**

---



**Plantae indet. (5863)**

---



**Reptilia indet. (5864)**

---



**Reptilia? indet. (5868)**

---



**Vertebrata indet. (5869)**

---



**Reptilia? indet. (5870)**

---



**Vertebrata indet. (5871)**

---



**Vertebrata indet. (5872)**

---



**Vertebrata indet. (5873)**

---



**Actinopterygii indet. (5874)**

---



**Chelonia indet. (5875)**

---



**Dinochelys whitei (5876)**

---



**Vertebrata indet. (5877)**

---



**Saurischia indet. (5878)**

---



**Chelonia? indet. (5879)**

---



**Chelonia? indet. (5880)**

---



**Chelonia indet. (5881)**

---



**Dinochelys whitei (5882)**

---



**Chelonia indet. (5883)**

---



**Chelonia? indet. (5884)**

---



**Reptilia indet. (5885)**

---



**Actinopterygii indet. (5886)**

---



**Vertebrata indet. (5887)**

---



**Reptilia indet. (5888)**

---



**Chelonia indet. (5889)**

---



**Ceratodus guentheri (5890)**

---



**Diplodocus sp. (5891)**

---



**Allosaurus fragilis (5892)**

---



**Mammalia indet. (5895)**

---



**Mammalia indet. (5896)**

---



**5.0 (5897)**

---



**Actinopterygii indet. (5898)**

---



**Reptilia? indet. (5899)**

---



**Crocodylia indet. (5900)**

---



**Reptilia? indet. (5901)**

---



**Actinopterygii indet. (5902)**

---



**Diplodocidae indet. (5903)**

---



**Allosaurus sp. (5913)**

---



**Gastropoda indet. (5919)**

---



**Camarasaurus sp. (5933)**

---



**Allosaurus fragilis (5934)**

---



**Allosaurus fragilis (5935)**

---



**Diplodocidae indet. (5953)**

---



**Equisetum sp. (5954)**

---



**Hypsilophodontidae? indet. (5955)**

---



**Actinopterygii indet. (5956)**

---



**Dinochelys whitei (5957)**

---



**Docodon victor (5958)**

---



**Theropoda indet. (5969)**

---



**Testudinata indet. (5971)**

---



**Actinopterygii indet. (5972)**

---



**Testudinata indet. (5974)**

---



**Dinochelys whitei (5975)**

---



**Glyptops plicatulus (5976)**

---



**Dinochelys whitei (5978)**

---



**Docodon? sp. (5980)**

---



**Testudinata indet. (5981)**

---



**Testudinata indet. (5982)**

---



**Theropoda indet. (5983)**

---



**Goniopholis sp. (5984)**

---



**Allosaurus sp. (5985)**

---



**Dinochelys whitei (5986)**

---



**Dinochelys whitei (5987)**

---



**Testudinata indet. (5988)**

---



**Dinochelys whitei (5989)**

---



**Testudinata indet. (5990)**

---



**Dinochelys whitei (5991)**

---



**Testudinata indet. (5992)**

---



**Testudinata indet. (5993)**

---



**Dinochelys whitei (5994)**

---



**Testudinata indet. (5996)**

---



**Camarasaurus sp. (6001)**

---



**Reptilia? indet. (6003)**

---



**Reptilia? indet. (6005)**

---



**Dinosauria indet. (6079)**

---



**Gastropoda indet. (6156)**

---





**Vertebrata indet. (6157)**

---



**Testudinata indet. (6158)**

---



**Reptilia indet. (6159)**

---



**Caudata indet. (6160)**

---



**Reptilia indet. (6161)**

---



**Vertebrata indet. (6162)**

---



**Reptilia indet. (6163)**

---



**Reptilia? indet. (6165)**

---



**Vertebrata indet. (6166)**

---



**Dinosauria indet. (6167)**

---



**Reptilia indet. (6196)**

---



**Reptilia indet. (6198)**

---



**Vertebrata indet. (6199)**

---



**Mammalia indet. (6200)**

---



**Crocodylia indet. (6201)**

---



**Reptilia indet. (6202)**

---



**Actinopterygii indet. (6203)**

---



**Vertebrata indet. (6204)**

---



**Vertebrata indet. (6205)**

---



**Choristodera indet. (6206)**

---



**Reptilia indet. (6207)**

---



**Actinopterygii indet. (6208)**

---



**Mammalia (6275)**

---



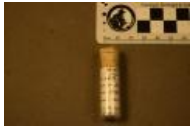
**Vertebrata (6276)**

---



**Vertebrata (6277)**

---



**Mammalia indet. (6278)**

---



**Mammalia indet. (6279)**

---



**Mammalia indet. (6280)**

---



**Mammalia indet. (6281)**

---



**Docodonta? indet. (6282)**

---



**Docodonta indet. (6283)**

---



**Vertebrata indet. (6284)**

---



**Testudinata indet. (6285)**

---



**Reptilia indet. (6286)**

---



**Osteichthyes? indet. (6287)**

---



**Vertebrata indet. (6288)**

---



**Osteichthyes indet. (6289)**

---



**Osteichthyes indet. (6290)**

---



**Crocodylia indet. (6291)**

---



**Theropoda indet. (6292)**

---



**Vertebrata indet. (6293)**

---



**Osteichthyes? indet. (6294)**

---



**Goniopholididae indet. (6295)**

---



**Crocodylia indet. (6296)**

---



**Osteichthyes? indet. (6297)**

---



**Osteichthyes indet. (6298)**

---



**Vertebrata indet. (6299)**

---



**Vertebrata indet. (6300)**

---



**Osteichthyes indet. (6301)**

---



**Reptilia indet. (6302)**

---



**Mollusca indet. (6303)**

---



**Vertebrata indet. (6304)**

---



**Testudinata indet. (6305)**

---



**Testudinata indet. (6306)**

---



**Glyptops sp. (6307)**

---



**Othnielosaurus sp. (6308)**

---



**Othnielosaurus sp. (6309)**

---



**Othnielosaurus sp. (6310)**

---



**Ceratodus sp. (6311)**

---



**Ceratodus sp. (6312)**

---



**Ceratodus sp. (6313)**

---



**Reptilia indet. (6314)**

---



**Cteniogenys sp. (6315)**

---



**Cteniogenys sp. (6316)**

---



**Actinopterygii indet. (6317)**

---



**Actinopterygii indet. (6318)**

---



**Actinopterygii indet. (6319)**

---



**Osteichthyes indet. (6320)**

---



**Osteichthyes iindet. (6321)**

---



**Osteichthyes indet. (6322)**

---



**Osteichthyes indet. (6323)**

---



**Vertebrata indet. (6350)**

---



**Mammalia indet. (6394)**

---



**Crocodylia indet. (6395)**

---



**Bivalvia indet. (6396)**

---



**Crocodylia indet. (6397)**

---



**Testudinata indet. (6398)**

---



**Testudinata indet. (6399)**

---



**Othnielosaurus sp. (6400)**

---



**Actinopterygii indet. (6401)**

---



**Actinopterygi iindet. (6402)**

---



**Reptilia? indet. (6409)**

---



**Dinochelys whitei (6410)**

---



**Reptilia indet. (6411)**

---



**Actinopterygii indet. (6412)**

---



**Reptilia? indet. (6413)**

---



**Othnielosaurus indet. (6414)**

---



**Actinopterygii indet. (6415)**

---



**Reptilia indet. (6416)**

---



**Vertebrata indet. (6417)**

---



**Vertebrata indet. (6418)**

---



**Testudinata indet. (6419)**

---



**Vertebrata indet. (6420)**

---



**Actinopterygii indet. (6421)**

---



**Vertebrata indet. (6422)**

---



**Dinosauria? indet. (6423)**

---





**Othnielosaurus indet. (6424)**

---



**Vertebrata indet. (6425)**

---



**Vertebrata indet. (6426)**

---



**Reptilia indet. (6427)**

---



**Reptilia indet. (6428)**

---



**Reptilia indet. (6429)**

---



**Reptilia indet. (6438)**

---



**Testudinata indet. (6439)**

---



**Actinopterygii indet. (6440)**

---



**Actinopterygii indet. (6441)**

---



**Glyptops sp. (6442)**

---



**Reptilia indet. (6443)**

---



**Dinochelys whitei (6444)**

---



**Testudinata indet. (6445)**

---



**Vertebrata indet. (6446)**

---



**Dinochelys whitei (6447)**

---



**Cteniogenys sp. (6448)**

---



**Sauropoda indet. (6449)**

---



**Testudinata indet. (6450)**

---



**Crocodylia? indet. (6451)**

---



**Actinopterygii indet. (6452)**

---



**Camarasaurus sp. (6453)**

---



**Dinochelys whitei (6454)**

---



**Dinochelys whitei (6455)**

---



**Squamata indet. (6456)**

---



**Testudinata indet. (6457)**

---



**Camptosaurus dispar (6458)**

---



**Camarasaurus sp. (6459)**

---



**Camarasaurus sp. (6460)**

---



**Camarasaurus sp. (6461)**

---



**Camarasaurus sp. (6462)**

---



**Ornithopoda? indet. (6463)**

---



**Camarasaurus sp. (6464)**

---



**Vertebrata indet. (6465)**

---



**Crocodylia indet. (6466)**

---



**Camarasaurus sp. (6467)**

---



**Camarasaurus sp. (6468)**

---



**Cteniogenys sp. (6470)**

---



**Sauropoda? indet. (6471)**

---



**Sauropoda? indet. (6472)**

---



**Actinopterygii indet. (6473)**

---



**Dinosauria indet. (6474)**

---



**Testudinata indet. (6475)**

---



**Testudinata indet. (6477)**

---



**Dinosauria? indet. (6478)**

---



**Vertebrata indet. (6481)**

---



**Cteniogenys sp. (6482)**

---



**Vertebrata indet. (6492)**

---



**Vertebrata indet. (6493)**

---



**Vertebrata indet. (6494)**

---



**Vertebrata indet. (6495)**

---



**Vertebrata indet. (6496)**

---



**Testudinata indet. (6497)**

---



**Reptilia indet. (6498)**

---



**Cteniogenys sp. (6504)**

---



**Ceratodus guentheri (6505)**

---



**Dinosauria? indet. (6506)**

---



**Cteniogenys sp. (6507)**

---



**Dryosaurus altus (6510)**

---



**Dryosaurus altus (6511)**

---



**Dryosaurus altus (6514)**

---



**Dryosaurus altus (6515)**

---



**Dryosaurus altus (6518)**

---



**Dinosauria indet. (6519)**

---



**Theropoda indet. (6538)**

---



**Ornithopoda indet. (6539)**

---



**Gastropoda (6540)**

---



**Ornithopoda indet. (6541)**

---



**Vertebrata indet. (6542)**

---



**Ceratodus sp. (6543)**

---



**Chelonia? (6544)**

---



**Gastropoda indet.a (6545)**

---



**Actinopterygii indet. (6546)**

---



**Dinochelys whitei (6547)**

---



**Vertebrata indet. (6548)**

---



**Reptilia? indet. (6549)**

---



**Vertebrata indet. (6550)**

---



**Camarasaurus sp. (6551)**

---



**Reptilia indet. (6552)**

---



**Actinopterygii indet. (6553)**

---



**Allosaurus sp. (6603)**

---



**Allosaurus sp. (6605)**

---



**Sauropoda indet. (6608)**

---



**Sauropoda indet. (6609)**

---



**Allosaurus sp. (6610)**



**Apatosaurus sp.a (6614)**



**Allosaurus sp. (6616)**



**Allosaurus sp. (6629)**



**Allosaurus sp. (6634)**



**Sauropoda? indet. (6636)**



**Sauropoda? indet. (6637)**



**Allosaurus sp. (6639)**



**Sauropoda indet. (6646)**



**Sauropoda indet. (6649)**



**Apatosaurus sp. (6650)**



**Sauropoda indet. (6652)**





**Allosaurus sp. (6657)**

---



**Allosaurus sp. (6658)**

---



**Diplodocus sp. (6659)**

---



**Allosaurus sp. (6660)**

---



**Allosaurus sp. (6663)**

---



**Sauropoda indet. (6666)**

---



**Allosaurus sp. (6672)**

---



**Sauropoda indet. (6674)**

---



**Sauropoda indet. (6677)**

---



**Theropoda indet. (6696)**

---



**Allosaurus sp. (6697)**

---



**Allosaurus sp. (6699)**

---



**Sauropoda indet. (6700)**

---



**Allosaurus sp. (6703)**

---



**Sauropoda indet. (6708)**

---



**Allosaurus sp. (6711)**

---



**Sauropoda indet. (6716)**

---



**MWC 6718 (6718)**

---



**Allosaurus sp. (6722)**

---



**Allosaurus sp.a (6805)**

---



**Allosaurus sp. (6807)**

---



**Diplodocus sp. (6808)**

---



**Diplodocus sp. (6809)**

---



**Allosaurus sp. (6810)**

---



**Ceratosaurus sp. (6811)**



**Allosaurus sp. (6813)**



**Diplodocus sp. (6814)**



**Allosaurus sp. (6815)**



**Diplodocus sp. (6816)**



**Sauropoda (6817)**



**Allosaurus sp. (6819)**



**Allosaurus sp. (6822)**



**Allosaurus fragilis (6956)**



**Apatosaurus sp. (6959)**



**Allosaurus fragilisa (6962)**



**Sauropoda indet. (6963)**



**Sauropoda indet. (6966)**

---



**Sauropoda indet. (6971)**

---



**Sauropoda indet. (6972)**

---



**Apatosaurus sp. (6980)**

---



**Apatosaurus sp. (6982)**

---



**Apatosaurus sp. (6983)**

---



**Apatosaurus sp. (6984)**

---



**Diplodocidae indet. (6985)**

---



**Allosaurus sp. (6986)**

---



**Vertebrata indet. (6987)**

---



**Diplodocidae indet. (6988)**

---



**Apatosaurus sp. (6989)**

---



**Diplodocidae indet. (6990)**

---



**Diplodocidae indet. (6991)**

---



**Diplodocidae indet. (6992)**

---



**Diplodocidae indet. (6993)**

---



**Diplodocidae indet. (6994)**

---



**Camarasaurus sp. (6995)**

---



**Camarasaurus sp. (6996)**

---



**Allosaurus sp. (7225)**

---



**Allosaurus sp. (7226)**

---



**Camarasaurus sp. (7227)**

---



**Allosaurus sp. (7228)**

---



**Allosaurus sp. (7229)**

---



**Allosaurus sp. (7230)**

---



**Allosaurus sp. (7231)**

---



**Allosaurus sp. (7232)**

---



**Allosaurus sp. (7233)**

---



**Allosaurus sp. (7234)**

---



**Allosaurus sp. (7237)**

---



**Allosaurus sp. (7239)**

---



**Allosaurus sp. (7240)**

---



**Allosaurus sp. (7241)**

---



**Allosaurus sp. (7242)**

---



**Allosaurus sp. (7243)**

---



**Allosaurus sp. (7244)**

---



**Allosaurus sp. (7246)**

---



**Allosaurus sp. (7247)**

---



**Allosaurus sp. (7249)**

---



**Allosaurus sp. (7250)**

---



**Allosaurus sp. (7251)**

---



**Allosaurus sp. (7252)**

---



**Allosaurus sp. (7262)**

---



**Sauropoda indet.a (7264)**

---



**Saurischia indet. (7265)**

---



**Theropoda indet. (7267)**

---



**Sauropoda indet. (7269)**

---



**Allosaurus sp. (7277)**

---



**Sauropoda indet. (7281)**

---



**Sauropoda indet. (7284)**

---



**Allosaurus sp. (7285)**

---



**Allosaurus sp. (7286)**

---



**Multituberculata indet. (7287)**

---



**Sauropoda indet. (7299)**

---



**Sauropoda indet. (7300)**

---



**Sauropoda? indet. (7303)**

---



**Allosaurus sp. (7304)**

---



**Diplodocidae indet. (7305)**

---



**Allosaurus sp. (7306)**

---



**Camarasaurus sp. (7307)**

---





**Diplodocidae indet. (7308)**

---



**Diplodocidae indet. (7309)**

---



**Camarasaurus sp. (7310)**

---



**Diplodocidae indet. (7311)**

---



**Allosaurus sp. (7312)**

---



**Diplodocidae indet. (7313)**

---



**Diplodocidae indet. (7314)**

---



**Camarasaurus sp. (7315)**

---



**Ceratosaurus sp. (7316)**

---



**Allosaurus sp. (7317)**

---



**Allosaurus sp. (7318)**

---



**Allosaurus sp. (7319)**

---



**Allosaurus sp. (7320)**

---



**Allosaurus sp. (7321)**

---



**Allosaurus sp. (7322)**

---



**Allosaurus sp. (7324)**

---



**Allosaurus sp. (7325)**

---



**Allosaurus sp. (7326)**

---



**Allosaurus sp. (7327)**

---



**Allosaurus sp. (7328)**

---



**Diplodocidae indet. (7331)**

---



**Allosaurus sp. (7333)**

---



**Allosaurus sp. (7334)**

---



**Allosaurus sp. (7335)**

---



**Allosaurus sp. (7337)**

---



**Allosaurus sp. (7338)**

---



**Allosaurus sp. (7339)**

---



**Allosaurus sp. (7340)**

---



**Allosaurus sp. (7341)**

---



**Diplodocidae indet. (7342)**

---



**Camarasaurus sp. (7343)**

---



**Diplodocidae indet. (7344)**

---



**Diplodocidae indet. (7347)**

---



**Allosaurus sp. (7350)**

---



**Allosaurus sp. (7351)**

---



**Allosaurus sp. (7356)**

---



**Allosaurus sp. (7357)**

---



**Allosaurus sp. (7358)**

---



**Allosaurus sp. (7359)**

---



**Allosaurus sp. (7360)**

---



**Allosaurus sp. (7361)**

---



**Allosaurus sp. (7362)**

---



**Allosaurus sp. (7363)**

---



**Lingual side of tooth crown after molding. (7364)**

---



**Allosaurus sp. (7365)**

---



**Allosaurus sp. (7366)**

---



**Allosaurus sp. (7367)**

---



**Allosaurus sp. (7368)**

---



**Allosaurus sp. (7369)**

---



**Allosaurus sp. (7370)**

---



**Allosaurus sp. (7371)**

---



**Allosaurus sp. (7372)**

---



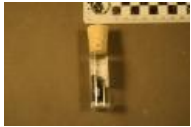
**Allosaurus sp. (7373)**

---



**Allosaurus sp. (7374)**

---



**Allosaurus sp. (7375)**

---



**Allosaurus sp. (7376)**

---



**Camarasaurus sp. (7377)**

---



**Diplodocidae indet. (7381)**

---



**Diplodocidae indet. (7382)**

---



**Allosaurus sp. (7383)**

---



**Allosaurus sp. (7384)**

---



**Allosaurus sp. (7385)**

---



**Vertebrata indet. (7387)**

---



**Allosaurus sp. (7388)**

---



**Allosaurus sp. (7389)**

---



**Allosaurus sp. (7390)**

---



**Allosaurus sp. (7391)**

---



**Apatosaurus sp. (7392)**

---



**Allosaurus sp. (7396)**

---



**Sauropoda indet. (7398)**

---



**Allosaurus sp. (7400)**

---



**Allosaurus sp. (7410)**

---



**Allosaurus sp. (7991)**

---



**Allosaurus sp. (8002)**

---



**Allosaurus sp. (8003)**

---



**Theropoda indet. (8004)**

---



**Allosaurus sp. (8005)**

---



**Allosaurus sp. (8008)**

---



**Allosaurus sp. (8009)**

---



**Allosaurus sp. (8010)**

---



**Allosaurus sp. (8012)**

---



**Allosaurus sp. (8014)**

---



**Allosaurus sp. (8045)**

---



**Diplodocidae indet. (8050)**

---



**Sauropoda indet. (8056)**

---



**Diplodocidae indet. (8230)**

---



**Diplodocidae indet. (8232)**

---



**Allosaurus sp. (8233)**

---



**Allosaurus fragilis (950)**

---