

Chenoweth Collection Hayden Survey
and Engineering and Mining Journal
(1981.186.1)

Uranium Mining on the Colorado
Plateau (1981.267.1)



North Alice Mine Photograph
(1981.267.2)



North Alice Mine Photograph
(1981.267.3)



North Alice Mine Photograph
(1981.267.4)



North Alice Mine Photograph
(1981.267.5)



North Alice Mine Photograph
(1981.267.6)

William Chenoweth Collection 1982 14
folders Newspaper Clippings
(1982.171.1)



Men Pushing Mine Cart Photograph
(1982.171.74)

AEC Mining Tours, Geological Society
Directory (1983.177.1)

Geology Reports, Development Costs,
Uranium, Exploration, AEC,
(1983.195.1)

U.S. Department of Energy PRRs
(1983.63.1)



Two CAT bulldozers working on dike
(1983.63.10)



Grand Junction Compound parking lot
prior to black topping (18 June 1957)
(1983.63.100)



Grand Junction Compound parking lot
prior to black topping (18 June 1957)
(1983.63.101)



Grand Junction Compound parking lot
prior to black topping (18 June 1957)
(1983.63.102)



Grand Junction Compound parking lot
prior to black topping (18 June 1957)
[Duplicate] (1983.63.103)



Grand Junction Compound parking lot
prior to black topping (18 June 1957)
[Duplicate] [Duplicate] (1983.63.104)



Grand Junction Compound parking lot
prior to black topping (18 June 1957)
[Duplicate] [Duplicate] [Duplicate]
(1983.63.105)



Grand Junction Compound paving
parking lot (9 July 1957) (1983.63.106)



Grand Junction Compound paving
parking lot (9 July 1957) (1983.63.107)



Grand Junction Compound paving
parking lot (9 July 1957) [Duplicate]
(1983.63.108)



Grand Junction Compound paving
parking lot (9 July 1957) [Duplicate]
[Duplicate] (1983.63.109)



Loading fill for dike across road from
AEC compound (1983.63.11)



AEC balance room Analytical Lab (25 June 1957) (1983.63.110)



AEC Air Handling Equipment (25 June 1957) (1983.63.111)



Grand Junction boiler House AEC Compound (1983.63.112)



New boiler house building (1956) (1983.63.113)



New boiler house outside looking in (1956) (1983.63.114)



Inside new boiler house AEC Compound (26 Sep 1956) (1983.63.115)



Grand Junction AEC Compound Boiler house inside (26 Sep 1956) (1983.63.116)



Snow storm at AEC Compound Grd. Jct. (1983.63.117)



Snow storm at AEC Compound Grd. Jct. Cleaned Walk (1983.63.118)



Snow storm at AEC Compound Grd. Jct. Cars covered (1983.63.119)



CAT Bulldozer pushing up fill across road (1983.63.12)



Snow storm at AEC Compound Grd. Jct. (1983.63.120)



Snow storm at AEC Compound Grd.
Jct. (1983.63.121)



AEC Log Cabin (1983.63.122)



Aerial photo view of AEC Compound
(1983.63.123)



Aerial photo view of AEC Compound
(1983.63.124)



AEC Heating Plant (May 1957)
(1983.63.125)



AEC Electric Shop (May 1957)
(1983.63.126)



AEC Fire Hydrant (Oct 1957)
(1983.63.127)



AEC New Foundation (1983.63.128)



Aerial view AEC Compound looking
West (1983.63.129)



CAT Bulldozer and loader working on
fill (1983.63.13)



Aerial view AEC Compound South end
of compound (1983.63.130)



Pilot Plant - Grand Junction
(1983.63.131)



Pilot Plant - Grand Junction
(1983.63.132)



Pilot Plant - Grand Junction
(1983.63.133)



Pilot Plant - Grand Junction
(1983.63.134)



Pilot Plant - Grand Junction
(1983.63.135)



Alkaline Leach Autoclave - Pilot Plant,
Grand Junction (1983.63.136)



Resin-in-Pulp Equipment - Pilot Plant
(1983.63.137)



5' x 6' EIMCO Ball Mill - Pilot Plant -
Grand Junction (1983.63.138)



AEC Sampling Plant Expansion site (23
Jul 1956) (1983.63.139)



Dike along Gunnison River
(1983.63.14)



AEC Sampling Plant Expansion site (23
Jul 1956) (1983.63.140)



AEC Sampling Plant Expansion site (23
Jul 1956) (1983.63.141)



AEC Sampling Plant Expansion site (23
Jul 1956) (1983.63.142)



AEC Sampling Plant Expansion site (23 Jul 1956) (1983.63.143)



AEC view of South dock area prior to sampling plant expansion (23 Jul 1956) (1983.63.144)



Starting construction SS Sampling plant expansion south dock showing new concrete slab (4 Sep 1956) (1983.63.145)



Getting sampling plant expansion slab area ready for pour (1983.63.146)



AS & R finished product lab-Associated Press Photo (1983.63.147)



Sampling plant with drums (1983.63.148)



Sampling plant with drums (1983.63.149)



Loader loading rock into truck (1983.63.15)



High school science students view "yellow cake jars" (1983.63.150)



Gerald Myers explains the atomic absorption spectrometer to high school science students (1983.63.151)



Nielsen B. O'Rear briefs the students on activities of the Grand Junction Office (1983.63.152)



Students observed taking a sample of Uranium concentrate from metal drum (1983.63.153)



Leo Higgins demonstrating gamma-ray spectroscopy to students (1983.63.154)



Leo Higgins shows students spectrum plate used to identify trace elements (1983.63.155)



Overall view of vanadium storage looking Northwest (18 Feb 1958) (1983.63.156)



Vanadium drums looking North - older drums (18 Feb 1958) (1983.63.157)



Vanadium storage closeup view looking Northwest (1983.63.158)



Vanadium storage closeup view looking Northwest (Copy of 158) (1983.63.159)



Dike along river looking South (1983.63.16)



Vanadium storage looking Northwest - 55 drums comparatively new (note rust on bottom and stacking arrangement) (18 Feb 1958) (1983.63.160)



This corroded drum requires only a light blow with a screwdriver to pierce the metal and tear (1983.63.161)



A typical old drum found to be corroded to the point it was leaking (18 Feb 1958) (1983.63.162)



Last load of Uranium concentrate (1983.63.163)



Drums in trailer last load+ 1 copy (1983.63.164)



Forklift with drums + 1 copy
(1983.63.165)



Last load forklift moving drums - Daily
Sentinel Photo + 1 (1983.63.166)



Forklift with drum with Jim latimer,
Frank McGinley AEC, Elton A
Youngbert, James Westbrook, Allen E.
Jones, Mancuso on Hyster - Last Load
(26 Jan 1971) + 3 Copies
(1983.63.167)



"Last Load" Hyster unloading drum -
Daily Sentinel Photo + 6 copies
(1983.63.168)



"Last Load" drums on pallet - Daily
Sentinel Photo + 1 copy (1983.63.169)



Gunnison River Bridge and dike (Black
Bridge) (1983.63.17)



Hyster unloading drums men in
background (1983.63.170)



Men standing in back of truck
watching the drums unload
(1983.63.171)



4 men looking at drums being
unloaded (1983.63.172)



Garrett Truck in compound + 1 copy
(1983.63.173)



Garrett Truck coming into compound
+ 1 copy (1983.63.174)



In Colorado Plateau Uranium Mine,
scrapping up ore on moveable scraper
loading slide into mine car
(1983.63.175)



Steel headframe and ore bins at Colorado Plateau. Vertical Shaft operations. (1983.63.176)



Drilling blast holes in thin-bedded uranium ore, with scraper in foreground (1983.63.177)



Loading car in uranium mine. Scoop dumping ore into car in part of a mechanical loader operated on compressed air brought into the mine by the pipe at left. (1983.63.178)



Frontend type tractor loader in large open stope of uranium mine (1983.63.179)



Aerial view of AEC Compound (1983.63.18)



Drilling blast holes in a Colorado Plateau uranium mine. Miner is using a Jack-let type percussion drill. (1983.63.180)



Pillar supported stopes in an underground Uranium mine. Pillars and ore will be extracted in retreat mining. (1983.63.181)



Underground low frontend loader (1983.63.182)



Underground dumping ore from diesel dump truck into Granby type car (1983.63.183)



Yard of Government ore-buying station at Monticello, Utah (1983.63.184)



Government ore-buying station and sampling plant at Monticello, Utah (1983.63.185)



Uranium ore truck dumping into bin at government ore-buying station (1983.63.186)



Headframe and skip hoist at small uranium mine. This is an inclined shaft mine. (1983.63.187)



Uranium processing mill at Monticello, Utah. This is the only government owned uranium mill. (1983.63.188)



Exploratory drilling for uranium with truck-mounted pneumatic percussion drill (1983.63.189)



Aerial view of AEC Compound (1983.63.19)



Loading uranium ore into truck at government ore-buying station and sampling plant (1983.63.190)



Only time AEC bonus for 10,000 was collected for 20 tons of ore more than 20% U3 O8 was collected April 9, 1958 by Lisbon Uranium Corp. consisted of 22.25 dry tones averaging 22.92% uranium worth \$61,016.72 per



Paul B. Martin, Elton A. Youngberg, Payne Kibbe, Allan E. Jones, Martin Gaines, and Jack T. Sherman standing in front of sign on truck "Richest Load of Uranium Ever Delivered Lisbon Uranium Corp. (1983.63.192)



Two survey single engine airplanes on ground AEC Section at Walker Field, Grand Junction, CO +1 copy (1983.63.193)



Two men in open restricted airplane (1983.63.194)



Eight survey airplanes on Ground Walker Field (1983.63.195)



Seven survey airplanes on Ground Walker Field + 2 copies (1983.63.196)



AEC Grand Junction Compound from Reservoir Hill (July 1963) (1983.63.197)



Barbwire fence going down to river -
AEC Compound (1983.63.198)



Black Bridge over Gunnison River +
Negative (1983.63.199)



Interior of building with last drums
from U3 08 (1983.63.20)



Chain link fence Southeast end +
negative (1983.63.200)



Barbwire across dike + negative
(1983.63.201)



Barbwire along dike + negative
(1983.63.202)



Three wheeler in front of RR Track and
drums + negative (1983.63.203)



Barbwire East side of AEC Compound
+ negative (1983.63.204)



Barbwire to river AEC Compound +
negative (1983.63.205)



Black Bridge over Gunnison River +
negative (1983.63.206)



Barbwire corner East side + negative
(1983.63.207)



Trailers with drums in background +
negative (1983.63.208)



AEC Compound from the West + negative (1983.63.209)



AEC uranium ore test anomaly at Walker Field Airport (1983.63.21)



Black Bridge area + Negative (1983.63.210)



Barbwire on dike + negative (1983.63.211)



Wide angle looking Southeast at AEC Compound. Gunnison River in center of picture, Redlands Canal in foreground (29 Sep 1966) + negative (1983.63.212)



AEC Float in Foresight Parade (18 May 1963) (1983.63.213)



South gate building AEC (1983.63.214)



United States Atomic Energy Com. Colo. raw materials office sign in front of Cemetery (1983.63.215)



South gate building AEC (1983.63.216)



Stack of Drums (1983.63.217)



Stack of drums (1983.63.218)



Corner of log cabin - Managers office (1983.63.219)



Slide: Anomaly at Walker Field Airport
(1983.63.22)



Manager's Office (1983.63.220)



Lucius Pitkin Mining Division Building
(1983.63.221)



Lucius Pitkin Mining Division Building
(1983.63.222)



Loading docks (1983.63.223)



Loading docks [Duplicate]
(1983.63.224)



Gate Entrance (1983.63.225)



U.S. Atomic Energy Commission,
Grand Junction, CO Office sign by gate
entrance (1983.63.226)



South Gate building and gate
(1983.63.227)



South Gate building (1983.63.228)



Office (1983.63.229)



Negative Strips (6) Drums in snow at
AEC (1983.63.23)



Silo (1983.63.230)



Silo with drums in background
(1983.63.231)



Concentrate drums Grand Junction
Compound - Associated Press Photo
(1983.63.232)



Stack of damaged drums
(1983.63.233)



Climax mill in mid 1950s Grand
Junction (1983.63.234)



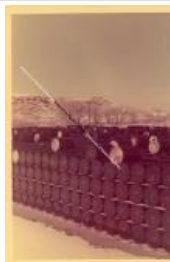
UCNC - Rifle Mill (1983.63.235)



Miss Atomic Energy + 1 copy
(1983.63.236)



Negatives: 13 strips (1-49)
(1983.63.237)



Uranium concentrate drum storage at
AEC (1983.63.24)



Drum storage stack at AEC
(1983.63.25)



Drum storage at AEC (1983.63.26)



Drum storage at AEC (1983.63.27)



Drum storage stack at AEC
(1983.63.28)



Drum storage stack at AEC
(1983.63.29)



Rows of drums AEC (1983.63.30)



Rows of drums AEC (1983.63.31)



Closeup of drum at AEC (1983.63.32)



View of drums from dike (1983.63.33)



Hyster operator carrying two drums
up ramp for loading in freight car
(1983.63.34)



AEC Compound uranium concentrate
drum storage (1983.63.35)



Rows of Drums (1983.63.36)



Drums in snow (1983.63.37)



Rows of drums looking East
(1983.63.38)



Rows of drums looking North
(1983.63.39)



Dump truck unloading fill on dike
(1983.63.4)



Rows of drums looking Northeast
(1983.63.40)

Negative of 1983.63.36 uncropped
(1983.63.41 neg 1)

Negative of 1983.63.37 uncropped
(1983.63.41 neg 2)

Negative 1983.63.37 neg 3
(1983.63.41 neg 3)

Negative of 1983.63.38 uncropped
(1983.63.41 neg 4)

Negative of 1983.63.39 uncropped
(1983.63.41 neg 5)

Negative of 1983.63.40 uncropped
(1983.63.41 neg 6)



DF car #65252 ready for first load of
concentrate to Fernald, Ohio
(1983.63.42)



Rio Grande DF car being loaded with
concentrate for shipment to Fernald,
Ohio (1983.63.43)



Finishing loading of car for shipment
to Fernald, Ohio (1983.63.44)



Picking up drum East of Sample plant
AEC (1983.63.45)



Rio Grande DF car being loaded with Hyster (1983.63.46)



Loading DF car long view can #65215 (1983.63.47)



Negatives (14) of loading drums on railcars, groups of men, AEC road signs (1983.63.48)



Climax uranium stack demolition 24 Nov 1970 (old sugar factory area) (1983.63.49)



Dike between compound and Gunnison River (1983.63.5)



Base of stack (1983.63.50)



Stack standing with buildings (1983.63.51)



Start blasting (1983.63.52)



Blasting (Photo) (1983.63.53)



Stack starting to fall (Photo) (1983.63.54)



Stack down (Photo) (1983.63.55)



Stack down lots of dust (Photo) (1983.63.56)



Stack down on ground (Photo)
(1983.63.57)



Stack base in pile, building (Photo)
(1983.63.58)



Large pile of rubble (Photo)
(1983.63.59)



Dike along Gunnison River (1983.63.6)



Old Sugar Beet Building (Photo)
(1983.63.60)



Mill site looking East (Photo)
(1983.63.61)



Interior of building #20 AEC
Compound AS & R C. Laboratory 19
Dec 1952 (Photo) (1983.63.62)



AS & R Co. Laboratory (Photo)
(1983.63.63)



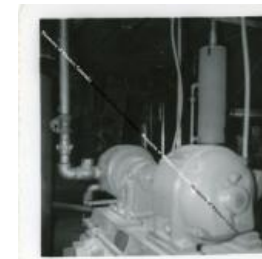
Tank in laboratory (Photo)
(1983.63.64)



Cabinets in lab (Photo) (1983.63.65)



Office in Lab (Photo) (1983.63.66)



Large pump in laboratory (Photo)
(1983.63.67)



Outside of building AEC (Photo)
(1983.63.68)



Tank in AS & R Co. Laboratory (Photo)
(1983.63.69)



CAT bulldozer pushing riprap into
river bank (1983.63.7)



Man and boy looking for uranium
(1983.63.71)



Two men with ore cart in a mine
(1983.63.72)



Hand loading ore into a wheelbarrow
(1983.63.73)



Worcester Operation on Atkinson
Mesa in the Uravan mineral belt
(1983.63.74)



Man operating drag buckets in a mine
(Photo) (1983.63.75)



Man looking for uranium (1983.63.76)



AEC uranium ore test anomaly at
Walker Field Airport [Negative of]
(1983.63.77)

Chenoweth Collection 72 folders, PRRs
(1983.63.78)



Air view of Gunnison Bridge
(1983.63.8)



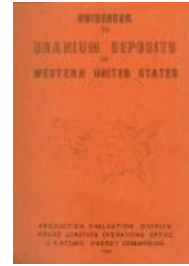
Gunnison Bridge and dike (1983.63.9)



AEC Compound with trailer houses
(1983.63.98)



AEC Compound First Aide Station
(1983.63.99)



Letters, reports, articles, and other literary works relating to uranium, mining, medical fall out, and more.

William Chenoweth Collection 1984 8
Folders Mining Booklets (1984.50.1)

AEC, Raw materials Program
(1985.37.1)

3 folders General Reports (1985.74.1)

Grand Valley Named, Geologic Survey,
Note Judy Prosser, Manhattan Project
(1985.74.1)

1 folder, AEC, Mill Tailings (1987.20)

AEC, DOE, Mill Tailings (1987.20.1)

Union Mines Development reports
(1987.72.1)



Miss Atomic Energy (1990.71)

Frank Silvey Personal History
(1990.83.1)

Uranium, Vanadium, map (1991.118.1)

"A History of Uranium Production in
Utah" by William L. Chenoweth
(1991.136.1)

Geology Mineral Deposits, Survey,
Map, Uranium, Radium, (1991.84.1)

Navajo Indian Reservation, Uranium,
Mines (1992.102.1)

Box of AEC/Uranium Reports
(1992.59.1)

Significant Errors in Lisa Godfrey's
Thesis on Calamity Mesa (1992.6.1)

Underground Uranium Mining
(1992.77.1)

Economics of Nuclear Stimulation,
Geonuclear letter, Uranium Ore and
Concentrate sampling, mining
abstracts (1994.3.1)

Raw Materials, Manhattan Project,
Colorado Plateau (1994.56.1)

New Paraho, Oil Shale Technologies
(1995.1.1)

Manhattan Project Report (1995.66)

AEC Road Program (1996.66.1)

1901 United States Map (1996.76.1)

Field Trips 1994, AEC site tour 1996
(1997.9.1)

Colorado River observations 1842-
1879, Manhattan Project, West. Small
Miners Assoc. Newsletters (2003.22.1)



Eberline Geiger Counter "Portable
Scaler" (2004.21.6)

"The Burning Rock" (2006.39.1)



GJ Railroad yards (2008.24.1)



Grutt award to Albrethsen
(2008.24.11)



Grutt award to Bruce (2008.24.12)



Grutt award to Retolaza (2008.24.13)



DOE employees (2008.24.16)



GJ aerial 1992-93 (2008.24.2)



Hetland and Jenkins 1977 (2008.24.20)



1977 award ceremony (2008.24.21)



Malan award to group (2008.24.23)



1977 awards attendees (2008.24.26)



Grutt award to Shafer (2008.24.29)



AEC Compound 1960s (2008.24.3)



1976 service award group
(2008.24.31)



GJ AEC Office (2008.24.4)



AEC Office Grand Junction Photograph
(2008.24.5)



Grutt award to Roach (2008.24.6)



Grutt award to Klemenic (2008.24.7)



Grutt award to Bowyer (2008.24.8)



Grutt award to Stavast (2008.24.9)