



Lecture on Spanish Influence in Western Colorado (135.1977)



Lecture (136.1976)



Program by Dan Roberts (159.1977)



Reading Diary & Letter (162.1994)



Pictorial History of Grand Junction (182.1978)



Buffalo Bill's Colt Pistol (1979.10.46)



Box (1979.102.2)

Portrait of George Crawford (1979.112.1)



Photo of the Building of the Grand Valley Headgate (1979.23.71)



Quinkent (1980.13.14)



Lest We Forget: A Short History of Early Grand Valley, Colorado, Originally Called Parachute, Colorado



IOOF Chair (1983.162.4)



Collection Of Documents Regarding William J.S. Henderson And His Family (1983.66.2)

Collection Of Documents Regarding William J.S. Henderson And His Family [Duplicate] (1983.66.21)

Collection Of Documents Regarding William J.S. Henderson And His Family [Duplicate] (1983.66.22)

Marriage Records Mesa County, Colorado (1984.9.1)



A Canyon, Coal, and A Railroad: The Story of Carpenter, Colorado (1985.114.1)



Daniel and Hannah Aupperle with Two Children (1988.40.75)



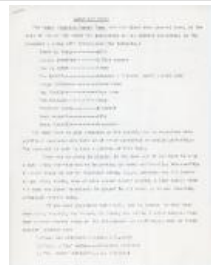
Metal Token. The Tibbs Cigar Co. Grand Junction Colo. (1989.124.481)



Red/Gray Wedding Dress (1993.74.1-2)



Woman's Relief Corp Medal (1995.105.1)



Early Day Music and Orchestra and the Ladies' Band Manuscript (1995.72.13)



"Alfred Packer" by Jack Murray (2002.5.4)



"Packer Court Scene" by Jack Murray (2002.5.6)



President's Medal (2003.17.5)



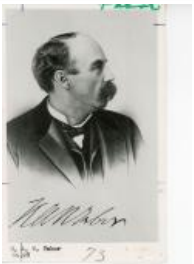
Dean Studio (2004.44.131)



Hilton Sign (2004.44.140)



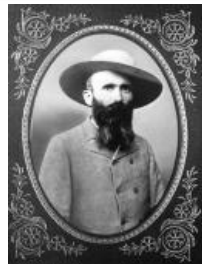
Gov. John Evans between 1814-1897  
(2004.44.27)



Horace Tabor (2004.44.28)



Frank Dean (2004.44.29)



Wallace DeBeque (2004.44.32)



Main Street, Looking West  
(2004.44.790)



Pre-Gunnison Tunnel (2004.44.83)



Montrose, Colorado 1883 (2004.44.84)



Kent-McClintock tombstones  
(2008.70.3)



Framed portrait of Wallace de Beque  
(2011.8.39)



Burro and man (2016.4.1.78)



Judge Joseph Ong Portrait (2018.113)



Pipe, Irrigation (2019.44.1)



Beaded Ute Belt (2020.85.2)



The Making of "One Bike" Opera  
(2021.22.1)



38-star flag (2022.10.1)



Portrait of unidentified woman  
(2023.40.1)



First School Building (2023.40.27)



Switch of Hair (2023.42.94)



Births and Marriages page from the  
Butler Family Bible (2023.48.26)



Early Education Program (384.1980)



Program on Early Entertainment  
(463.1981)



Program on George Crawford  
(494.1982)



100 Years of Mesa County Government  
- Panel Presentation (495.1982)



Dutch Oven (A517)

Butter Churn (B423)



Blue Dress (two piece) (B496.1)



Shawl (B496.2)



Hat (B496.3)



Reticule (coin purse) (B496.4)



Wrapper/Nightgown (D239)



Lowell school / jail (F0520)



View of Mesa Lake (F186.1)



Mesa Creek on the Trail to Mesa Lake  
(F186.2)



Ute Prisoner Surrender Tree (F230.1)



Ute Prisoner Surrender Tree (F230.2)



Ute Camping Trip (F347.1)



Portrait of Actress Emma Carson  
(F720.4)



Grand Junction Railroad Station  
(F720.59)

Dry Creek Cowboys at Dinner (F801.1)



Harrington, Bliss & Co. (F833.1)



Dutch Gin Bottle (H442)



Velvet Flocked Bodice (H564A)