



Oral History with Nellie Sewell,
Carbondale Area (1.1976)



Dominick Arcieri Oral History
Interview (101.1976)



Oral History with Evelyn Beatty
(102.1978)



Western Homemaker's Life And Work
(103.1977)



Dorothy Kittle Oral History (104.1977)



Oral History Will Minor and Lee
Warner (105.1976)



Coming From Nebraska To Fruita -
Oral History with Emma Nagel
(106.1977)



Oral History of Charles Edward
Thomas (107.1976)



Oral History of Tom and Helen
Williams (108.1978)



Medicine In Collbran (109.1976)



Oral History of Della Crider (111.1978)



Oral History of Wyatt Wood (113.1978)



2nd Oral History with Wyatt Wood
(114.1978)



Craig Aupperle Oral History
(116.1976)

Craig Aupperle Oral History
[Duplicate] (116.19761)



2nd Oral History with Alfred Flagg
(119.1977)



Wayne Aspinall Oral History
(120.1978)



Dr. Munro Oral History (122.1977)



Oral History of Karl and Nellie Linn
(123.1977)



Craig Aupperle Oral History - Charlie
Glass; Cattle Industry (125.1976)



Oral History Orville & Helen Altenbern
(126.1977)



Pearl Redmon Oral History (127.1978)



Oral History with Dorothy Beard
(128.1978)



Oral History with Armand De Beque
(129.1979)



Early De Beque (130.1977)



Early Grand Junction (131.1978)



Oral History with Jean and Benerita
Urruty (134.1978)



Oral History with C. B. Aupperle
(137.1976)



Oral History with Rufus Hirons
(138.1977)

Oral History with Rufus Hirons
[Duplicate] (138.19771)



Oral History of Pearl Randolph
(139.1978)



Oral History of Gertrude McKay
(140.1977)



Oral History with Willis and Lotus
Blevins (141.1978)



Oral History of Winifred Bull
(142.1977)

Oral History of Winifred Bull
[Duplicate] (142.19771)



Oral History of Anna Foster (143.1978)



Oral History of Frank Jonick
(144.1978)



Oral History of Luella Morgan
(145.1978)



Oral History with Dr. Munro
(146.1978)



Oral History of Ruth Smith and Agnes
Wright (147.1978)



Oral History with Dr. Munro
(148.1978)



Oral History with Anna Alstatt
(149.1978)



Oral History with Lina Mae Biggs
(150.1977)



Oral History of Mary Corcoran
(152.1978)



Oral History of Nevada Burford
(153.1978)



School Memories (154.1977)



Oral History of Vern Wood (155.1977)



Oral History of Lois Saunders
(156.1978)



Panel on Glade Park (157.1978)



Mesa County Architecture (158.1978)



Program by Dan Roberts (159.1977)



Oral History with Bob Evans
(161.1978)



Oral History with W.B. Bruce Howard
(163.1978)



Oral History with Dudley Mitchell
(164.1978)



Oral History with Carl Forsman
(166.1978)



Oral History with Charlotte Barnes
(167.1978)



Life In Rifle, Colorado (168.1978)



Oral History of May Denton (169.1978)



Oral History of Minnie Foster
(170.1978)



Oral History of Myrtle Hetzel
(171.1978)



Orphan Girl's Life (172.1978)



Oral History with Florence Shambeau
(173.1978)



Oral History of Veone Christine Taylor
(174.1978)



Recalling Fruita (175.1978)



Oral History of Gracia Vogley
(176.1978)



Oral History with Alfrieda Stevenson
(177.1978)

Oral History with Alfrieda Stevenson
[Duplicate] (177.19781)



Oral History with Kenneth Thompson
(178.1977)



Oral History of Harold Shults
(179.1977)



Panel on Kannah Creek (180.1978)



Glade Park Oral History (183.1978)



Oral History with Darwin Burford
(184.1978)



Oral History of Dorothy Evans
(185.1978)



Brunk's Comedians And Tent Show
(186.1978)



Oral History of Lulu Kennon
(187.1978)



Weston & Nellie Massey Oral History
(188.1978)



Teaching & Ranch Life Oral History
(189.1978)



Jim Franklin Oral History (190.1978)



Debeque Ranching (192.1978)



Stockman's Experiences (193.1978)



Oral History Memories of Western
Slope Life (194.1978)



School Teaching (197.1978)

School Teaching [Duplicate]
(197.19781)



Lions Club Members on Stilts
(1979.116.5)



The Colorado Fuel and Iron Company
Scatter Tag (1979.37.1)



Street Scene, 1950s (1979.78.18)



California Zephyr, Denver & Rio
Grande Western Railroad (1979.99.1)



Oral History with C B Aupperle
(198.1975)



Voting Booth Canvas (1980.14.1)



Portrait of Helen Audre (1980.153.17)



Man and Woman Outdoors
(1980.153.18)



Mother James and Don (1980.153.23)



Eddie, Margie, Mother James, Donnie,
Pearl, and Helen (1980.153.25)



Unidentified Family Photo
(1980.153.8)

Dr. Ligon Price Collection (1980.256.1)

Geiger Counter (1980.37.1)



Al Look Painting (1981.115)

Al Look Collection Correspondences
(1981.115.1)

Al Look Collection Correspondences
[Duplicate] (1981.115.12)

Misc. Documents (1981.115.15)

Misc. Documents [Duplicate]
(1981.115.151)

Correspondence , articles, clippings
and notes (1981.115.29)

Correspondence , articles, clippings
and notes [Duplicate] (1981.115.291)

Manuscripts and financials
(1981.115.34)

Manuscripts and financials [Duplicate]
(1981.115.341)

Harold Bryant Book and
Correspondence (1981.115.35)

Harold Bryant Book and
Correspondence [Duplicate]
(1981.115.351)

Correspondence And manuscripts
(1981.115.43)

Correspondence And manuscripts
[Duplicate] (1981.115.431)

Correspondence and clippings
(1981.115.5)

Doc Shores Letters (1981.115.54)

Doc Shores Letters [Duplicate]
(1981.115.541)

Correspondence and clippings
[Duplicate] (1981.115.57)

Al Look Painting [Duplicate]
(1981.1151)

Chenoweth Collection Hayden Survey
and Engineering and Mining Journal
(1981.186.1)



Charles Steen Mine Photograph
(1981.196.1)



Cisco Kid Advertisement (1981.224.1)



"Late Summer in the Collbran Area" by
Alfred Nestler (1981.235.3)



"Mt. Sopris Autum 1957" by Alfred
Nestler (1981.235.4)



Wallpaper (1981.243.2)



Wallpaper (1981.243.3)

Uranium Mining on the Colorado Plateau (1981.267.1)



The Vigilante by Harold Bryant (1982.100.31)



Preston Walker (1982.135.10)



Jewelry Shop owner (1982.135.11)



Jewelry Shop owner, Ray (1982.135.14)



Helen and Forrest Carhartt on the Monument (1982.135.15)



Wes Carhartt on Main Street (1982.135.16)



Highway built by CCC (1982.135.5)



Col. Booth and Helen Carhartt (1982.135.6)



View of the Monument (1982.135.7)



Scene from the highway built by the CCC (1982.135.8)



Rock formation on the Monument
(1982.135.9)

William Chenoweth Collection 1982 14
folders Newspaper Clippings
(1982.171.1)

William Chenoweth Collection 1982 14
folders Newspaper Clippings
[Duplicate] (1982.171.124)

William Chenoweth Collection 1982 14
folders Newspaper Clippings
[Duplicate] (1982.171.126)



Uravan Mill Photograph (1982.171.15)



Uravan Mill Site Photograph
(1982.171.16)



Uravan Valley Photograph
(1982.171.17)



Uravan Valley Photograph
(1982.171.18)



Uravan Valley Photograph
(1982.171.19)



Mining Photograph (1982.171.26)



Mining Photograph (1982.171.27)



Mining Photograph (1982.171.28)



Tenderfoot Camp Photograph
(1982.171.5)



Tenderfoot Camp Photograph
(1982.171.6)



Men Pushing Mine Cart Photograph
(1982.171.74)



Dozer Moving Ore Photograph
(1982.171.91)



Men Looking at Mine Photograph
(1982.171.92)

Pillbox Hat (1982.197.1)

Pillbox Hat [Duplicate] (1982.197.11)

Pillbox Hat [Duplicate] (1982.197.12)



Hat Box (1982.197.4)



Lest We Forget: A Short History of
Early Grand Valley, Colorado,
Originally Called Parachute, Colorado



Grand Junction Eagles' Signed
Baseball (1982.207.1)



Baron Lake (1982.213.31)

Railroad Lantern (1982.37.1)



Dictating Machine (1983.162.1)

U.S. Department of Energy PRRs
(1983.63.1)



Two CAT bulldozers working on dike
(1983.63.10)



Grand Junction Compound parking lot
prior to black topping (18 June 1957)
(1983.63.100)



Grand Junction Compound parking lot
prior to black topping (18 June 1957)
(1983.63.101)



Grand Junction Compound parking lot
prior to black topping (18 June 1957)
(1983.63.102)



Grand Junction Compound parking lot
prior to black topping (18 June 1957)
[Duplicate] (1983.63.103)



Grand Junction Compound parking lot
prior to black topping (18 June 1957)
[Duplicate] [Duplicate] (1983.63.104)



Grand Junction Compound parking lot
prior to black topping (18 June 1957)
[Duplicate] [Duplicate] [Duplicate]
(1983.63.105)



Grand Junction Compound paving
parking lot (9 July 1957) (1983.63.106)



Grand Junction Compound paving
parking lot (9 July 1957) (1983.63.107)



Grand Junction Compound paving parking lot (9 July 1957) [Duplicate] (1983.63.108)



Grand Junction Compound paving parking lot (9 July 1957) [Duplicate] (1983.63.109)



Loading fill for dike across road from AEC compound (1983.63.11)



AEC balance room Analytical Lab (25 June 1957) (1983.63.110)



AEC Air Handling Equipment (25 June 1957) (1983.63.111)



Grand Junction boiler House AEC Compound (1983.63.112)



New boiler house building (1956) (1983.63.113)



New boiler house outside looking in (1956) (1983.63.114)



Inside new boiler house AEC Compound (26 Sep 1956) (1983.63.115)



Grand Junction AEC Compound Boiler house inside (26 Sep 1956) (1983.63.116)



Snow storm at AEC Compound Grd. Jct. (1983.63.117)



Snow storm at AEC Compound Grd. Jct. Cleaned Walk (1983.63.118)



Snow storm at AEC Compound Grd.
Jct. Cars covered (1983.63.119)



CAT Bulldozer pushing up fill across
road (1983.63.12)



Snow storm at AEC Compound Grd.
Jct. (1983.63.120)



Snow storm at AEC Compound Grd.
Jct. (1983.63.121)



AEC Log Cabin (1983.63.122)



Aerial photo view of AEC Compound
(1983.63.123)



Aerial photo view of AEC Compound
(1983.63.124)



AEC Heating Plant (May 1957)
(1983.63.125)



AEC Electric Shop (May 1957)
(1983.63.126)



AEC Fire Hydrant (Oct 1957)
(1983.63.127)



AEC New Foundation (1983.63.128)



Aerial view AEC Compound looking
West (1983.63.129)



CAT Bulldozer and loader working on fill (1983.63.13)



Aerial view AEC Compound South end of compound (1983.63.130)



Pilot Plant - Grand Junction (1983.63.131)



Pilot Plant - Grand Junction (1983.63.132)



Pilot Plant - Grand Junction (1983.63.133)



Pilot Plant - Grand Junction (1983.63.134)



Pilot Plant - Grand Junction (1983.63.135)



Alkaline Leach Autoclave - Pilot Plant, Grand Junction (1983.63.136)



Resin-in-Pulp Equipment - Pilot Plant (1983.63.137)



5' x 6' EIMCO Ball Mill - Pilot Plant - Grand Junction (1983.63.138)



AEC Sampling Plant Expansion site (23 Jul 1956) (1983.63.139)



Dike along Gunnison River (1983.63.14)



AEC Sampling Plant Expansion site (23 Jul 1956) (1983.63.140)



AEC Sampling Plant Expansion site (23 Jul 1956) (1983.63.141)



AEC Sampling Plant Expansion site (23 Jul 1956) (1983.63.142)



AEC Sampling Plant Expansion site (23 Jul 1956) (1983.63.143)



AEC view of South dock area prior to sampling plant expansion (23 Jul 1956) (1983.63.144)



Starting construction SS Sampling plant expansion south dock showing new concrete slab (4 Sep 1956) (1983.63.145)



Getting sampling plant expansion slab area ready for pour (1983.63.146)



AS & R finished product lab- Associated Press Photo (1983.63.147)



Sampling plant with drums (1983.63.148)



Sampling plant with drums (1983.63.149)



Loader loading rock into truck (1983.63.15)



High school science students view "yellow cake jars" (1983.63.150)

High school science students view
"yellow cake jars" [Duplicate]
(1983.63.1501)

High school science students view
"yellow cake jars" [Duplicate]
(1983.63.1502)



Gerald Myers explains the atomic
absorption spectrometer to high school
science students (1983.63.151)

Gerald Myers explains the atomic
absorption spectrometer to high school
science students [Duplicate]
(1983.63.1511)

Gerald Myers explains the atomic
absorption spectrometer to high school
science students [Duplicate]
(1983.63.1512)



Nielsen B. O'Rear briefs the students
on activities of the Grand Junction
Office (1983.63.152)



Students observed taking a sample of
Uranium concentrate from metal drum
(1983.63.153)



Leo Higgins demonstrating gamma-ray
spectroscopy to students
(1983.63.154)



Leo Higgins shows students spectrum
plate used to identify trace elements
(1983.63.155)



Overall view of vanadium storage
looking Northwest (18 Feb 1958)
(1983.63.156)



Vanadium drums looking North - older
drums (18 Feb 1958) (1983.63.157)



Vanadium storage closeup view
looking Northwest (1983.63.158)



Vanadium storage closeup view looking Northwest (Copy of 158) (1983.63.159)



Dike along river looking South (1983.63.16)



Vanadium storage looking Northwest - 55 drums comparatively new (note rust on bottom and stacking arrangement (18 Feb 1958) (1983.63.160)



This corroded drum requires only a light blow with a screwdriver to pierce the metal and tear (1983.63.161)



A typical old drum found to be corroded to the point it was leaking (18 Feb 1958) (1983.63.162)



Drums in trailer last load+ 1 copy (1983.63.164)



Forklift with drums + 1 copy (1983.63.165)



Last load forklift moving drums - Daily Sentinel Photo + 1 (1983.63.166)



Forklift with drum with Jim latimer, Frank McGinley AEC, Elton A Youngbert, James Westbrook, Allen E. Jones, Mancuso on Hyster - Last Load (26 Jan 1971) + 3 Copies (1983.63.167)



"Last Load" Hyster unloading drum - Daily Sentinel Photo + 6 copies (1983.63.168)



"Last Load" drums on pallet - Daily Sentinel Photo + 1 copy (1983.63.169)



Gunnison River Bridge and dike (Black Bridge) (1983.63.17)



Hyster unloading drums men in background (1983.63.170)



Men standing in back of truck watching the drums unload (1983.63.171)



4 men looking at drums being unloaded (1983.63.172)



Garrett Truck in compound + 1 copy (1983.63.173)



Garrett Truck coming into compound + 1 copy (1983.63.174)



In Colorado Plateau Uranium Mine, scraping up ore on moveable scraper loading slide into mine car (1983.63.175)



Steel headframe and ore bins at Colorado Plateau. Vertical Shaft operations. (1983.63.176)



Drilling blast holes in thin-bedded uranium ore, with scraper in foreground (1983.63.177)



Loading car in uranium mine. Scoop dumping ore into car in part of a mechanical loader operated on compressed air brought into the mine by the pipe at left. (1983.63.178)



Frontend type tractor loader in large open stope of uranium mine (1983.63.179)



Aerial view of AEC Compound (1983.63.18)



Drilling blast holes in a Colorado Plateau uranium mine. Miner is using a Jack-let type percussion drill. (1983.63.180)



Pillar supported stopes in an underground Uranium mine. Pillars and ore will be extracted in retreat mining. (1983.63.181)



Underground low frontend loader (1983.63.182)



Underground dumping ore from diesel dump truck into Granby type car (1983.63.183)



Yard of Government ore-buying station at Monticello, Utah (1983.63.184)



Government ore-buying station and sampling plant at Monticello, Utah (1983.63.185)



Uranium ore truck dumping into bin at government ore-buying station (1983.63.186)



Headframe and skip hoist at small uranium mine. This is an inclined shaft mine. (1983.63.187)



Uranium processing mill at Monticello, Utah. This is the only government owned uranium mill. (1983.63.188)



Exploratory drilling for uranium with truck-mounted pneumatic percussion drill (1983.63.189)



Aerial view of AEC Compound (1983.63.19)



Loading uranium ore into truck at government ore-buying station and sampling plant (1983.63.190)



Only time AEC bonus for 10,000 was collected for 20 tons of ore more than 20% U₃O₈ was collected April 9, 1958 by Lisbon Uranium Corp. consisted of 22.25 dry tones averaging 22.92% uranium worth \$61,016.72 per



Paul B. Martin, Elton A. Youngberg, Payne Kibbe, Allan E. Jones, Martin Gaines, and Jack T. Sherman standing in front of sign on truck "Richest Load of Uranium Ever Delivered Lisbon Uranium Corp. (1983.63.192)



Two survey single engine airplanes on ground AEC Section at Walker Field, Grand Junction, CO +1 copy (1983.63.193)



Two men in open restricted airplane (1983.63.194)



Eight survey airplanes on Ground Walker Field (1983.63.195)



Seven survey airplanes on Ground Walker Field + 2 copies (1983.63.196)



AEC Grand Junction Compound from Reservoir Hill (July 1963) (1983.63.197)



Barbed wire fence going down to river - AEC Compound (1983.63.198)



Black Bridge over Gunnison River + Negative (1983.63.199)



Interior of building with last drums from U3 08 (1983.63.20)



Chain link fence Southeast end + negative (1983.63.200)



Barbed wire across dike + negative (1983.63.201)



Barbed wire along dike + negative (1983.63.202)



Three wheeler in front of RR Track and drums + negative (1983.63.203)



Barbwire East side of AEC Compound + negative (1983.63.204)



Barbwire to river AEC Compound + negative (1983.63.205)



Black Bridge over Gunnison River + negative (1983.63.206)



Barbwire corner East side + negative (1983.63.207)



Trailers with drums in background + negative (1983.63.208)



AEC Compound from the West + negative (1983.63.209)



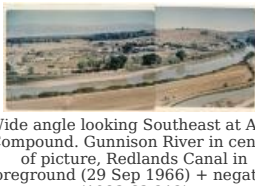
AEC uranium ore test anomaly at Walker Field Airport (1983.63.21)



Black Bridge area + Negative (1983.63.210)



Barbwire on dike + negative (1983.63.211)



Wide angle looking Southeast at AEC Compound. Gunnison River in center of picture, Redlands Canal in foreground (29 Sep 1966) + negative (1983.63.212)



South gate building AEC (1983.63.214)



United States Atomic Energy Com.
Colo. raw materials office sign in front
of Cemetery (1983.63.215)



South gate building AEC (1983.63.216)



Stack of Drums (1983.63.217)



Stack of drums (1983.63.218)



Corner of log cabin - Managers office
(1983.63.219)



Slide: Anomaly at Walker Field Airport
(1983.63.22)



Manager's Office (1983.63.220)



Lucius Pitkin Mining Division Building
(1983.63.221)



Lucius Pitkin Mining Division Building
(1983.63.222)



Loading docks (1983.63.223)



Loading docks [Duplicate]
(1983.63.224)



Gate Entrance (1983.63.225)



U.S. Atomic Energy Commission,
Grand Junction, CO Office sign by gate
entrance (1983.63.226)



South Gate building and gate
(1983.63.227)



South Gate building (1983.63.228)



Office (1983.63.229)



Negative Strips (6) Drums in snow at
AEC (1983.63.23)



Silo (1983.63.230)



Silo with drums in background
(1983.63.231)



Concentrate drums Grand Junction
Compound - Associated Press Photo
(1983.63.232)



Stack of damaged drums
(1983.63.233)



Climax mill in mid 1950s Grand
Junction (1983.63.234)



UCNC - Rifle Mill (1983.63.235)



Miss Atomic Energy + 1 copy
(1983.63.236)



Negatives: 13 strips (1-49)
(1983.63.237)



Uranium concentrate drum storage at
AEC (1983.63.24)



Drum storage stack at AEC
(1983.63.25)



Drum storage at AEC (1983.63.26)



Drum storage at AEC (1983.63.27)



Drum storage stack at AEC
(1983.63.28)



Drum storage stack at AEC
(1983.63.29)



Rows of drums AEC (1983.63.30)



Rows of drums AEC (1983.63.31)



Closeup of drum at AEC (1983.63.32)



View of drums from dike (1983.63.33)



Hyster operator carrying two drums
up ramp for loading in freight car
(1983.63.34)



AEC Compound uranium concentrate
drum storage (1983.63.35)



Rows of Drums (1983.63.36)



Drums in snow (1983.63.37)



Rows of drums looking East
(1983.63.38)



Rows of drums looking North
(1983.63.39)



Dump truck unloading fill on dike
(1983.63.4)



Rows of drums looking Northeast
(1983.63.40)

Negative of 1983.63.36 uncropped
(1983.63.41 neg 1)

Negative of 1983.63.37 uncropped
(1983.63.41 neg 2)

Negative 1983.63.37 neg 3
(1983.63.41 neg 3)

Negative of 1983.63.38 uncropped
(1983.63.41 neg 4)

Negative of 1983.63.39 uncropped
(1983.63.41 neg 5)

Negative of 1983.63.40 uncropped
(1983.63.41 neg6)



DF car #65252 ready for first load of concentrate to Fernald, Ohio (1983.63.42)



Rio Grande DF car being loaded with concentrate for shipment to Fernald, Ohio (1983.63.43)



Finishing loading of car for shipment to Fernald, Ohio (1983.63.44)



Picking up drum East of Sample plant AEC (1983.63.45)



Rio Grande DF car being loaded with Hyster (1983.63.46)



Loading DF car long view can #65215 (1983.63.47)



Negatives (14) of loading drums on railcars, groups of men, AEC road signs (1983.63.48)



Dike between compound and Gunnison River (1983.63.5)



Dike along Gunnison River (1983.63.6)



Interior of building #20 AEC Compound AS & R Co. Laboratory 19 Dec 1952 (Photo) (1983.63.62)



AS & R Co. Laboratory (Photo) (1983.63.63)



Tank in laboratory (Photo)
(1983.63.64)



Cabinets in lab (Photo) (1983.63.65)



Office in Lab (Photo) (1983.63.66)



Large pump in laboratory (Photo)
(1983.63.67)



Outside of building AEC (Photo)
(1983.63.68)



Tank in AS & R Co. Laboratory (Photo)
(1983.63.69)



CAT bulldozer pushing riprap into
river bank (1983.63.7)



Photo of three women at Miss Atomic
Energy pageant (1983.63.70)



Man and boy looking for uranium
(1983.63.71)



Two men with ore cart in a mine
(1983.63.72)



Hand loading ore into a wheelbarrow
(1983.63.73)



Worcester Operation on Atkinson
Mesa in the Uravan mineral belt
(1983.63.74)



Man operating drag buckets in a mine
(Photo) (1983.63.75)



Man looking for uranium (1983.63.76)



AEC uranium ore test anomaly at
Walker Field Airport [Negative of]
(1983.63.77)

Chenoweth Collection 72 folders, PRRs
(1983.63.78)

Chenoweth Collection 72 folders, PRRs
[Duplicate] (1983.63.781)

Chenoweth Collection 72 folders, PRRs
[Duplicate] (1983.63.782)



Air view of Gunnison Bridge
(1983.63.8)



Gunnison Bridge and dike (1983.63.9)



AEC Compound with trailer houses
(1983.63.98)



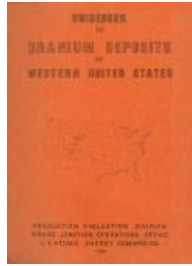
AEC Compound First Aide Station
(1983.63.99)



Collection Of Documents Regarding
William J.S. Henderson And His Family
(1983.66.2)

Collection Of Documents Regarding
William J.S. Henderson And His Family
[Duplicate] (1983.66.21)

Collection Of Documents Regarding
William J.S. Henderson And His Family
[Duplicate] (1983.66.22)



Letters, reports, articles, and other
literary works relating to uranium,
mining, medical fall out, and more.

William Chenoweth Collection 1984 8
Folders Mining Booklets (1984.50.1)



Navajo Weaved Rug (1985.102.6)



A Canyon, Coal, and A Railroad: The
Story of Carpenter, Colorado
(1985.114.1)

AEC, Raw materials Program
(1985.37.1)

3 folders General Reports (1985.74.1)



Photo of cattle near Little Blue Cabin
(1986.26.2)



Portrait Photograph of Sidney Brooks
Lloyd (1986.26.21)



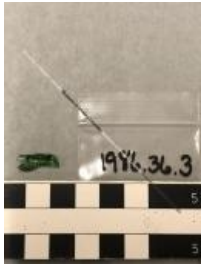
Photo of Sidney Brooks Lloyd outside
Rapid Creek home (1986.26.5)



Photo of Lloyd home on Rapid Creek
with automobile (1986.26.6)



Glass Fragments (1986.36.2)



Glass Fragment (1986.36.3)



Glass Jar Fragment (1986.36.4)



Kerosene Lamp Chimney Fragment
(1986.36.5)



Stained Glass Fragment (1986.36.7)



Cat D4 Crawler Tractor Dozer 1950
(1986.53.27)

1 folder, AEC, Mill Tailings (1987.20)



Photo of unidentified landscape with
structures (1987.26.12)



Geology and Ore Resources by Webber
(1987.72.16)



Geiger Counter (1988.80.2)



Ina Dyer Oral History (199.1978)

Ina Dyer Oral History [Duplicate]
(199.19781)



Plate, Commemorative (1990.10.1)



Photo of Galloping Goose train stopped at Trout Lake (1990.10.59)



Photo of Rio Grande Southern Railroad depot at Ridgeway (1990.10.60)



Photo of Galloping Goose railcars at depot in Placerville, Co (1990.10.61)



Ski Boot (1990.33.5)



Miss Atomic Energy (1990.71)



Photo of 16 unidentified individuals (1990.8.23)



Photo of unidentified individuals at bar (1990.8.26)



Ela family (1991.125.16)



Xerox of Julia Harris's experience (1991.34.3)

Navajo Indian Reservation, Uranium, Mines (1992.102.1)

Box of AEC/Uranium Reports (1992.59.1)

Significant Errors in Lisa Godfrey's Thesis on Calamity Mesa (1992.6.1)



Camera with Leather Case and Accessories (1992.65.1)

Economics of Nuclear Stimulation, Geonuclear letter, Uranium Ore and Concentrate sampling, mining abstracts (1994.3.1)



Skirt (1994.37.9)



First Assembly of God Church Plate (1995.102.1)



Schmidt Hardware Co. (1996.60.1)

AEC Road Program (1996.66.1)



Farm Labor Office (1997.55.30)



Landscape View of Palisade Facing the Book Cliffs (1997.55.32)



Korean War Era, US Navy Raincoat (1997.58.1)



Salida railroad 1951 (1997.8.13)



Clearing snow near Gunnison (1997.8.14)



Engine 483 (1997.8.15)



WPS at Crested Butte Dec. 16 / 1953
Engine 483 (1997.8.16)



Barrington 1954
Snow plow (1997.8.17)



2nd oldest branch - Salida from Saluda
Coal chute (1997.8.18)



Montrose 1952
Sleeper car (1997.8.21)



near Sal. 1955
Mears Junction (1997.8.22)



Durango 1954
Engine 499 (1997.8.37)



Barrington 1951
Engine 483 (1997.8.38)



Barrington 1954
Flanger (1997.8.39)



near Saluda 3-52
Engine 268 (1997.8.40)



Barrel transfer, Salida (1997.8.7)



State Cut - Crested Butte Branch 1954
State Cut, Crested Butte (1997.8.8)



Willard Wood 1952 (1998.38.6)



Wood family 1957 (1998.38.8)



Al Look's Hat (1999.33.1)



little Theatre Players (1999.37.4)



Yellow Lace Dress and Jacket
(1999.55.10)



Light Blue Dress (1999.55.11)



Yellow Floral Dress (1999.55.12)



Brown Dress with orange accents
(1999.55.13)



Light Purple Dress and Jacket
(1999.55.14)



White and Silver Vest (1999.55.16)



Metallic Button Up Shirt (1999.55.17)



Navy Dress and Shawl, with red
accents (1999.55.18)



White Eyelet Lace Dress (1999.55.2)



Blue and Green Floral Dress
(1999.55.21)



Blue Dress and Shirt with Floral Bands
(1999.55.24)



Pink Lace Dress (1999.55.3)



Light Pink Dress (1999.55.5)



Beige Lace Dress with brown accents
(1999.55.6)



White and Silver Dress (1999.55.7)



Green Satin Dress (1999.55.8)



Gray and Black dotted Dress
(1999.55.9)



Earl Craven (1999.8.118)



John Otto And A Pioneer On Glade
Park (20.1976)



John Fritz Becker Oral History, Zelma
Parkes Oral History (200.1977)



AEC Seal Sign (2002.18.1)



Colorado Centennial Clasp (2003.38.1)



Ten Commandments (2004.44.0101)



AEC compound (2004.44.1004)



Roosevelt (2004.44.1018)



Al Look (2004.44.1063)



Manuels (2004.44.118)



Cattle Drive (2004.44.146)



Preston Walker (2004.44.210)



Colorado's Centennial (2004.44.211)



Friendship Jubilee Court (2004.44.22)



Friendship Jubilee pageant (2004.44.23)



Friendship Jubilee (2004.44.24)

Friendship Jubilee [Duplicate]
(2004.44.2410)

Friendship Jubilee [Duplicate]
(2004.44.2411)



Orchard Mesa Middle School Staff
(2004.44.245)



Orchard Mesa Middle School Staff
(2004.44.246)



Orchard Mesa Middle School Staff
(2004.44.247)



Orchard Mesa Middle School Staff
(2004.44.248)



Orchard Mesa Middle School Staff
(2004.44.249)



Gary Adams Junior Merchant
(2004.44.25)



Orchard Mesa Middle School Staff
(2004.44.250)



Orchard Mesa Middle School Staff
(2004.44.251)

Negatives (2004.44.252)



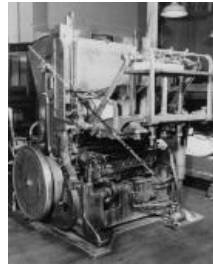
Friendship Jubilee Hawaiian Luau
(2004.44.26)



Daily Sentinel Line Drawing
(2004.44.608)



Daily Sentinel Office (2004.44.609)



The Daily Sentinel Printing Press
(2004.44.621)



The Daily Sentinel Printing Press
(2004.44.622)



The Daily Sentinel Printing Press
(2004.44.623)



Sentinel Printing Workers
(2004.44.624)



Sentinel Printing (2004.44.625)



Sentinel Printing Workers
(2004.44.626)



Sentinel Printing (2004.44.627)



Sentinel Printing Workers
(2004.44.628)



Sentinel Printing (2004.44.629)



Sentinel Printing (2004.44.630)



Sentinel Printing (2004.44.631)



Sentinel Printing (2004.44.632)



Printing Press (2004.44.633)



Main Street Grand Junction
(2004.44.814)



Bicycle Club (2004.44.827)



John Otto (2004.44.849)



Cardiff School (2004.44.92)



Park Opera House plaque
(2004.44.991)



Rev. Oliver W. Jadwin (2006.1.560)

Rev. Oliver W. Jadwin [Duplicate]
(2006.1.5601)

Rev. Oliver W. Jadwin [Duplicate]
(2006.1.5602)



T.S. Ary (2006.123.3842)



Wayne Aspinall (2006.123.3879)



Climax Uranium Ore Display
(2006.127.1)



Uranium/Vanadium mill at Uravan
(2006.141.1)



Ore Buying Station (2006.141.12)



Vanadium Mill Near Rifle (2006.149.1)



AEC Compound 1950 (2007.122.1)



Fawn at Lincoln Park Zoo (2008.28.1)



Bear at Lincoln Park Zoo (2008.28.2)



Antiquarian Club 1955 (2008.31.3)



Rio Blanco Courthouse, Meeker CO
(2009.30.11)



Meeker Elementary School
(2009.30.12)



Meeker High School (2009.30.13)



Craig Main Street (2009.30.6)



Craig Main Street (2009.30.7)



Business Section, Rifle CO (2009.30.8)



Cosgriff Hotel and Court, Craig, Colorado (2009.30.9)



Chet Enstrom Oral History (201.1978)



Pill box from the Mesa Drug Co. (2011.40.1)



Pridicta TV Set by Philco; "Holiday" Model (2012.2.1)



Yellow Dress (2014.95.10)



Wine colored dress (2014.95.3)



Fur lined hat (2014.95.46)



Black hat with net (2014.95.47)



Black and white portrait of Jo Arriza (2018.15.11)



Black and white portrait of Ben Arrizabalaga (2018.15.19)



YMCA Keychain and Key (2018.17.1)



Photo of cabin and bluffs (2019.2.34)



Photo of cattle on Mesa (2019.2.58)



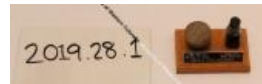
Photo of Sidney Brooks Lloyd outside home (2019.2.59)



Photo of Lloyd house on Rapid Creek (2019.2.60)



Hercules Explosives Crate (2019.27.1)



Container, Ore (2019.28.1)



Brick from St. Joe Church (2019.65.1)



Trolley Tie (2019.65.2)



Photo of Grand Junction Consistory Class, and Class List (2019.8.47)



Rufos Hirons Oral History (202.1978)



1956 Lincoln Park Pool Plaque
(2020.65.1)



Beaded Ute Necklace (2020.85.1)



Oklahoma Uranium Corporation
Ledger (2021.13.1)

Sewing machine (2021.15.1)

Sewing Machine Cover (2021.15.2)



Cowboy Boots (2021.17.1)



The Making of "One Bike" Opera
(2021.22.1)



Exterior of the Benge's Shoe store
(2021.24.11)



Benge's Stained Glass (2021.24.2)



Exterior of Benge's Shoestore
(2021.24.6)



Biggs-Kurtz Hardware Entrance
(2021.24.68)



Benge's Shoe Store Interior
(2021.24.7)



The Galloping Goose/Rio Grande Southern (2021.24.71)



Benge's shoes donated to Navajo (2021.24.74)



Exterior of Benge's Shoestore (2021.24.8)



Photo of Camel (2022.0.2)



Earl & Helen Andis (2022.2.1)



Grand Junction High School Memorabilia Mugs (2022.66.1)

Grand Junction High School Memorabilia Mugs [Duplicate] (2022.66.11)

Grand Junction High School Memorabilia Mugs [Duplicate] (2022.66.12)



Grand Junction High School Memorabilia Mugs (2022.66.2)

Grand Junction High School Memorabilia Mugs [Duplicate] (2022.66.21)

Grand Junction High School Memorabilia Mugs [Duplicate] (2022.66.22)



GJHS Class Reunion Magnet (2022.66.3)

GJHS Class Reunion Magnet
[Duplicate] (2022.66.31)

GJHS Class Reunion Magnet
[Duplicate] (2022.66.32)



Napkin from the LaCourt Hotel
(2022.66.6)



Autographed photo of Duncan Renaldo
"Cisco Kid" (2022.66.77)



Photo of man with ice cream cart
(2022.66.81)



Theatre Arts Magazine (2023.0.25)



Missiles on Airplane (2023.30.1)



Military Certificate of Training
Records (2023.30.12)



Dog Tag (2023.30.15)



Dog Tag (2023.30.16)



Ring (2023.30.19)



Group of Army Officials (2023.30.2)



Belt Buckle (2023.30.21)



Purple Heart Ribbon Pin (2023.30.22)



Military Ribbon Pin (2023.30.23)



Military Ribbon Pin (2023.30.24)

McCLEARY

Name Tag (2023.30.25)



Belt Buckle (2023.30.26)



US Army 45th Infantry Division Patch
(2023.30.27)



Pin Brag Lanyard (2023.30.28)



Army Jacket (2023.30.29)



US Army Missile (2023.30.3)



Picture of Harley McCleary
(2023.30.7)



Two Soldiers in Front of Building
(2023.30.8)



Wayne Chiesman (2023.40.36)



Black and White Photograph of 3 Men on Stilts in an Orchard (2023.43.12)



Births and Marriages page from the Butler Family Bible (2023.48.26)



Deaths and Memoranda page from the Butler Family Bible (2023.48.27)



Photo of the king of Iraq, Faisal II (2023.7.14)



Photo of long load trailers (2023.7.42)



Photo of automobile and semi truck crash (2023.7.50)



Black and White photo of Atomic pageant winner and attendant's (2023.7.76)



Oral History Charles and Catherine Moore (203.1977)



Andrew Riddle Oral History (204.1978)



Arvid Muhr Oral History (208.1978)



Frosty Tilton Oral History (209.1978)



Marie Young Oral History (210.1979)



C.B. Aupperle Oral History (211.1979)



Reuben Pitts Oral History (212.1979)



Pavetti & Van Dyke Oral History
(213.1979)



Program on Folklore (215.1979)



Oral History with Jim Franklin
(216.1978)



Oral History with Gwen McKee
(217.1978)



Margaret Golden Oral History
(218.1978)



Irene Gramlich Oral History
(219.1979)



Grazing Service, Western Colorado
And Eastern Utah (22.1975)



Elizabeth McCullah Oral History
(220.1978)



Bunk Weimer Oral History (221.1979)



Lucille Mahannah Oral History
(222.1979)



Helen Wilson Oral History (224.1979)



Edward Martin Oral History
(225.1979)



Oral History Eda Musser (226.1978)



Jean Page Oral History (227.1979)



Jean Urruty Oral History (228.1978)



Dale Luke Oral History (229.1979)



Joe Fox Oral History (230.1979)



Frank Wright Oral History (231.1978)



Oral History Lizzie Anderson
(233.1979)



Bill Raber Oral History (234.1979)



Marie Young Oral History (237.1979)



Joel & Jenny Brewster Oral History
(238.1978)



J.W. Latham Oral History (239.1979)



Dr. Addie Maynard Oral History
(240.1978)



Jean Page Oral History (241.1979)



WJ Pray Oral History (242.1979)



Harvey Smith Oral History (243.1979)



Marie Young Oral History (245.1979)



Art Brodak Oral History (246.1979)



Ethel Hotchkiss Oral History
(247.1979)



Oral History Ellsworth Guy (248.1979)



A. L. Guerrie Oral History (249.1979)



Grand Junction Depression (25.1971)



Daisy Green Oral History (250.1979)



Alice Olsen Oral History (251.1979)



Lester Starr Oral History (252.1979)



Merle Winters Oral History (253.1978)



Armand De Beque Oral History
(254.1979)



Bill Nelson Oral History (255.1981)



Wayne Farley Oral History (256.1979)



Oral History of Morgan Goss
(257.1979)



Anna McGinley and Mae Plunkett Oral
History (258.1979)



Howard Hafey Oral History (259.1979)



Growing Fruit In Grand Junction
(26.1976)



Winifred McCaig Oral History
(260.1978)



Lee Serna Oral History (261.1979)



Bernice Carney Oral History
(262.1979)



Grace Kistler Oral History (263.1979)



Rudolph Seibert Oral History
(264.1979)



Frank Wright Oral History (265.1979)



Arthur Tufty Oral History (266.1979)



Anna McGinley & May Plunkett Oral
History (267.1979)



Marie Edwards Oral History
(269.1979)



Carl Gesberg Oral History (270.1979)

Carl Gesberg Oral History [Duplicate]
(270.19791)



Elizabeth Kisher Oral History
(271.1979)



Fred Powell Oral History (272.1979)



Connor Shephard Oral History
(273.1979)



Hubbard & Livingston Oral History
(274.1979)



Limberg Oral History (275.1979)



Thomas Wedell Oral History
(276.1989)



Enstrom Candy Company History
(2763.2016)



Oral History of Anna Gallegos
(277.1979)



Oscar Jaynes Oral History (278.1979)



Eugene Rowley Oral History
(279.1979)



Mary Warren Oral History (280.1989)



Alfred Bigum Oral History (281.1979)



Biglin Oral History (283.1979)



Craig & Devine Oral History
(284.1979)



Edna Brenton Oral History (285.1979)



June and Levi Morse Oral History
(286.1979)



Gateway History & Cowboy Poetry
(287.1979)



Lampert Oral History (288.1979)



Louis Balliger Oral History (289.1979)



Walter Gaddy Oral History (290.1979)



Sarah Gowen Oral History (291.1979)



Shults Oral History (292.1979)



Dudley Mitchell Oral History
(293.1979)



Dr. Matteroli Oral History (294.1979)



Lee Toothaker Oral History (295.1979)



C. H. Buttolph Oral History (296.1979)



Elsie Cockrell Oral History (297.1979)



Virgil & Edithe Hickman Oral History
(298.1979)



Dudley Mitchell Oral History
(299.1979)



Interview with Lucy Ela: Glade Park
And John Otto (3.1975)



Emma Nagel Oral History (300.1979)



Oral History Bill Raber (301.1979)



Oral History of Dudley Mitchell
(303.1978)



Oral History of Dudley Mitchell
(304.1978)



Oral History of Charles Smelzer
(306.1979)



Oral History of Margaret Stump
(307.1980)



Oral History of Rudy and Fannie Ruth
Susman (308.1980)



CCC Camps On The Monument
(31.1976)



Program on Fruita and Interurban
(310.1980)



Oral History with Gilbert Baylis
(311.1972.1)



Oral History with Mary Giblin
(311.1972.2)



Bob Grant Oral History (311.1972.3)



Oral History with Clem Goettelman
(311.1972.4)



Oral History with Al Look (311.1972.5)



Oral History with William Nelson
(311.1972.6)



Oral History with Mary Price
(311.1972.7)



Oral History with Mildred Shaw
(311.1972.8)



Oral History with Josephine Biggs
(312.1980)



Oral History of Katherine Fuoco
(313.1979)



Oral History with Ruth Hoffman
(314.1980)



Oral History with Priscilla Broderson
(316.1980)



Oral History of Sarah Mahannah
(317.1980)



Oral History with Laura Foster
(318.1980)



Oral History with Len & Violet
Haseman (319.1983)



Oral History with Ernest Hicks
(320.1980)



Oral History Harry Godby (321.1980)

Oral History Harry Godby [Duplicate]
(321.19801)



Oral History of Carl Gesberg
(322.1980)



Oral History with Oscar Jaynes Jr.
(323.1980)



Oral History with R.B. Kearl
(324.1980)



Oral History with Harold Booth
(325.1980)



Oral History of Mary & Gilbert Gordon
(327.1980)



Oral History with Emma Nagel
(328.1980)



Meeting of Last Squad Club
(329.1980)



Dairy Industry In Grand Junction
(33.1975)



Oral History of Jene Hicks (330.1980)



Oral History with Glenn McFall
(331.1980)

Oral History with Glenn McFall
[Duplicate] (331.19801)



Harry Godby Oral History (332.1980)



Oral History with Madge Davis
(335.1980)



Oral History with Glenn McFall
(337.1980)



William Cunningham Oral History
(338.1980)



Harold Zimmerman Oral History
(339.1980)



Oral History Ella Kinterknecht
(340.1980)



Oral History with Glenn McFall
(341.1980)



Oral History with Glenn McFall
(342.1980)



Howard Shults Oral History
(344.1980)



Ica Click Oral History (345.1980)



Charles Lundy Oral History (346.1979)



Frank Hennes Oral History (347.1980)



Charles Thomas Oral History
(348.1980)



Virgil & Edithe Hickman Oral History
(349.1980)



Asunta Mendicelli Oral History
(350.1980)



Jennie Dixon Oral History (351.1980)



Harry Gardner Oral History (352.1980)



Thatcher Shaw Oral History
(356.1980)



Joseph Egger Oral History (357.1980)



Minnie Roberts Oral History
(358.1980)



Asunta Mendicelli Oral History
(359.1980)



Fred Hurlburt Oral History (360.1980)



Gertrude Rader Oral History
(361.1980)



Emma Nicolay Oral History (362.1980)



Julia Harris Oral History (363.1980)



Nellie Robins Oral History (364.1980)



Alice Johnson Oral History (365.1978)



Dorothy Littler Oral History
(366.1980)



Bertha Schlegel Oral History
(368.1980)



Ray Bernal Oral History (369.1980)



Ella Kinterknecht & Lew Parcell Oral History (370.1980)

Henry Snyder Oral History (371.1979)



Roy McCoy Oral History (372.1981)



Financial Institutions of Mesa County (375.1980)



Loudene Humeston Oral History (377.1978)



Earl & Ella Foster Oral History (379.1980)



Immigrant From Basque Country (38.1975)



Program on Railroads (381.1980)



Program on Architecture (382.1980)



Oral History Mary A. Cox (385.1980)



John Collier Oral History (386.1980)



John Hart Oral History (387.1980)



Marie Spomer Oral History (388.1980)



Oral History Henry Spomer (389.1980)



Mary Plaisted Oral History (390.1980)



Harriet Johnson Oral History
(391.1980)

Harriet Johnson Oral History
[Duplicate] (391.19801)



Anna Clark Oral History (392.1980)



Henry Brunk Oral History (394.1980)

Henry Brunk Oral History (395.1980)



John Collier Oral History (396.1980)



Grace Hill Wade Oral History
(397.1980)

Grace Hill Wade Oral History
[Duplicate] (397.19801)



Kate Wills Oral History (398.1980)



Mary Rait Oral History (399.1980)



Farming And Ranching On Glade Park
(40.1976)



Julia Harris Oral History (400.1980)



Fruita - Early Settlers (41.1975)



Palisade History And Fruit Growing
(43.1977)



Development Of Grand Valley
(Parachute) (44.1977)



Early Day Social Worker (45.1977)

Helen Johnson Oral History (451.1982)

Abe Karp Oral History (453.1982)



Helen Johnson Oral History (457.1982)

Oral History (458.1981)



History of Jaynes And Borschell
Families (46.1978)



Armand De Beque Oral History
(462.1981)



Program on Early Entertainment
(463.1981)



Wanda and Paul Brechler Oral History
(464.1981)



Gertrude Rader Oral History
(465.1981)



Role of the Dedicated Amateur in
Archaeology (466.1982)



Program on the Collbran and Plateau
Valley Area (469.1981)



Oral History with Bailey & Shaw
(471.1981)



Walter Simineo Oral History
(472.1981)



Wayne Aspinall Oral History
(473.1981)



Carl Dewey Oral History (474.1981)



Albert Phillips Jr. Oral History
(475.1981)



William Whatley Oral History
(476.1982)



Ruth Tilton Oral History (477.1982)



Al Look Oral History (479.1981)



Early Palisade (48.1977)



Jo Ferguson Oral History (480.1982)



Emma Conner Oral History (481.1982)



Charlotte Claar Oral History
(482.1980)



Jo Ferguson Oral History (483.1982)



Roy Dinkins Oral History (484.1981)



James Franklin Oral History
(485.1982)



Bruce Howard Oral History (486.1982)



Merian & Burt Rosenthal and Hershel
Sedalnick Oral History (488.1981)



Rena Nisbet Oral History (489.1982)



Early Black Residents - Oral History
with Josephine Dickey (49.1977)



A. Perry Christensen Oral History
(490.1982)



Ruby Gaither Oral History (491.1982)



Program on agriculture, Eclipse book
(493.1982)



Program on George Crawford
(494.1982)



100 Years of Mesa County Government
- Panel Presentation (495.1982)



Al Look Oral History (498.1982)



Fruit Grower And Cattle Man
(50.1977)



Cecilia Cardman Oral History
(501.1982)



Essie Aspinall Oral History (502.1982)



Sylvia Ruland Oral History (508.1982)



Early Homesteading And Teaching
(51.1977)



Sterling Smith Oral History (510.1982)



Julia Harris Oral History (511.1982)



Gertie Rader Oral History (514.1982)

Wilbur & Mildred Downey Oral History
(515.1982)



Don Burgess Oral History (518.1982)



Hazel Murphey Oral History
(519.1982)



Homesteading And Family Life
(52.1977)

Marie Bittle Oral History (522.1982)

Alice Clinton Oral History (523.1982)

Eugene Perry Oral History (524.1982)

Thomas Charles & Emma Nagel Oral
History (525.1982)



Ann Stokes Oral History (526.1982)



Bessie Millholland Oral History
(527.1982)



Oral History with Josephine Dickey
(529.1981)



Development Of A Cowboy (53.1977)



Les Kittle Oral History (530.1980)



Ruth Echternach Oral History
(531.1982)



Richard Williams Oral History
(532.1982)



Dottie Lamm to Women's Network
Centennial Luncheon (533.1982)



Molly Stucker Oral History (536.2002)



Erwin Ormsbee & Dick Williams Oral
History (537.1981)



Marion Echternach Oral History
(538.1981)



Al Look Oral History (539.1981)



Influential People And Leaders
(54.1976)



Leta Atchison Oral History (540.1982)



Harry Talbot Oral History (542.1982)



Lowell Laycock Oral History
(544.1982)



Al Look Oral History (545.1982)



Rosemary Kitson Oral History
(546.1982)



Harold Stafford Oral History
(547.1982)



Wayne Aspinall Oral History
(548.1982)



Leroy and Sharon Gardner Oral
History (549.1982)



Beginnings Of The Town (55.1977)



Kermit Brubaker Oral History
(550.1982)



Grand Junction's First Radio &
Television Stations (57.1975)



Sheep & Cattle Ranching in Cisco
(58.1977)



Early Sheep And Cattle Experiences
(59.1977)



Pioneer Educator And Civic Leader
(60.1977)



Reminiscences of Mesa County
Doctors (64.1971)



Early Whitewater (66.1977)



Homestead In Horsethief
Canyon/Plateau Valley (67.1977)



Prominent Homemaker And Educator
(68.1977)



Beginnings Of Grand Junction
(69.1977)

Beginnings Of Grand Junction
[Duplicate] (69.1977)



Early Stockman And Businessman
(70.1977)



Farming And Homemaking (71.1977)



Oral History of Russell and Lillian
Paige (72.1977)



Early Life In Fruita (73.1978)



Italian Immigrants in Fruita (75.1977)



Early Medicine In Telluride (76.1977)



Public Nursing (79.1977)



Class of 1927 Fruita Union High School (81.1977)



Early Whitewater Ranch Life (85.1977)



Musician; Sawmill Operator From Delta (86.1977)



Early Fruitgrower (87.1977)



Early Grd. Jct. Citizens And Businesses (89.1977)



A Teacher's Early Life And Friendships (98.1977)



Ladies Shoes (A259)



Gene Autry Cap Gun (D2011.5.67)



Tooled Leather Sandals (D289)



Chief Joe Sekaku a Hopi Snake Chief,
by E. H. Bischoff (E146)



Pictographs near Gateway (F223.1)



Charlie Post's Hearse (F552.1)



Negative of Joanne Louise Dean
(F602.38)



Negative of Joanne Louise Dean
(F602.39)



Negative of Joanne Louise Dean
(F602.40)



Negative of Joanne Louise Dean
(F602.41)



Black and white portrait of Howard
Beehler (F616)



Lambda Alpha Sorority, National
Conclave for 1950 (F826.2)



Black and white photograph of
Courtland P. Bliss (F97.4)



Black and white photo of Irvin H.
Blanke (F97.5)



Hyloicus dolli coloradus "Colorado
Sphinx" Moth (G11)



Colias alexandra "Queen Alexandra's sulphur" Butterfly (G13)



Nathalis iole "Dainty Sulphur" Butterfly (G9)



Commemorative Plate (H505)



Collar (H804)



Collar (H805)