



Oral History with Nellie Sewell,
Carbondale Area (1.1976)



Medicine In Collbran (109.1976)



Oral History of Karl and Nellie Linn
(123.1977)



Craig Aupperle Oral History - Charlie
Glass; Cattle Industry (125.1976)



Oral History Orville & Helen Altenbern
(126.1977)



Pearl Redmon Oral History (127.1978)



Oral History with Dorothy Beard
(128.1978)



Oral History with Armand De Beque
(129.1979)



Early De Beque (130.1977)



Early Grand Junction (131.1978)



Oral History with C. B. Aupperle
(137.1976)



Oral History with Rufus Hiron
(138.1977)

Oral History with Rufus Hirons
[Duplicate] (138.19771)



Oral History of Pearl Randolph
(139.1978)



Oral History with Willis and Lotus
Blevins (141.1978)



Oral History of Winifred Bull
(142.1977)

Oral History of Winifred Bull
[Duplicate] (142.19771)



Oral History of Anna Foster (143.1978)



Oral History of Frank Jonick
(144.1978)



Oral History of Luella Morgan
(145.1978)



Oral History of Ruth Smith and Agnes
Wright (147.1978)



Oral History with Dr. Munro
(148.1978)



Oral History with Anna Alstatt
(149.1978)



Oral History with Lina Mae Biggs
(150.1977)



Oral History of Mary Corcoran
(152.1978)



Oral History of Nevada Burford
(153.1978)



School Memories (154.1977)



Oral History of Vern Wood (155.1977)



Oral History of Lois Saunders
(156.1978)



Panel on Glade Park (157.1978)



Mesa County Architecture (158.1978)



Program by Dan Roberts (159.1977)



Oral History with Bob Evans
(161.1978)



Oral History with W.B. Bruce Howard
(163.1978)



Oral History with Dudley Mitchell
(164.1978)



Oral History with Carl Forsman
(166.1978)



Oral History with Charlotte Barnes
(167.1978)



Life In Rifle, Colorado (168.1978)



Oral History of May Denton (169.1978)



Oral History of Minnie Foster
(170.1978)



Oral History of Myrtle Hetzel
(171.1978)



Orphan Girl's Life (172.1978)



Oral History with Kenneth Thompson
(178.1977)



Oral History of Harold Shults
(179.1977)



Panel on Kannah Creek (180.1978)



Program on the Teller Institute
(181.1978)



Pictorial History of Grand Junction
(182.1978)



Glade Park Oral History (183.1978)



Oral History with Darwin Burford
(184.1978)



Oral History of Dorothy Evans
(185.1978)



Brunk's Comedians And Tent Show
(186.1978)



Oral History of Lulu Kennon
(187.1978)



Weston & Nellie Massey Oral History
(188.1978)



Teaching & Ranch Life Oral History
(189.1978)



Jim Franklin Oral History (190.1978)



Debeque Ranching (192.1978)



Stockman's Experiences (193.1978)



Oral History Memories of Western
Slope Life (194.1978)



School Teaching (197.1978)

School Teaching [Duplicate]
(197.19781)



1979.10.46

Buffalo Bill's Colt Pistol (1979.10.46)



Portrait of Anna Foster (1979.114.1)



Derosiers and. Purdy (1979.23.113)



Jordan Grows the Big Ones at Palisade, Colorado, 'The Home of the Peach' (1979.23.159)



Photo of Bringing in Peaches to Western Slope Fruit Growers Association (1979.23.2)



Photograph of A. R. Lloyd and Family (1979.23.3)



Photograph of a Livery and Feed Stable (1979.23.66)



Photo of Palisade School and Students (1979.23.7)



Photo of Palisade Classroom circa 1900 (1979.23.8)



Early day fruit stand (1979.23.82)



Blouse (1979.50.1)



Dress (1979.52.1)



Teller Institute: Old Hospital
(1979.66.2)



Oral History with C B Aupperle
(198.1975)



Blouse (1980.10.2)



Blouse (1980.10.3)



Palisade street scene (1980.115.45)



Fruit Growers Association Building in
Palisade (1980.115.46)



Methodist Church in Palisade
(1980.115.47)



Wheat Stacker (1980.169.1)



Sugar Beet Field (1980.169.2)

Dr. Ligon Price Collection (1980.256.1)



Cross Orchards House, Barn, and
Orchards (1980.66.17)

Doc Shores Letters (1981.115.54)

Doc Shores Letters [Duplicate]
(1981.115.541)



Ferrying Apatosaurus out of Colorado
River (1981.115.733)

Ferrying Apatosaurus out of Colorado
River [Duplicate] (1981.115.7331)



Lest We Forget: A Short History of
Early Grand Valley, Colorado,
Originally Called Parachute, Colorado



Washington Friends Academy
(1982.202.9)



2 piece dress with detachable collar
(1982.220.17)



IOOF Chair (1983.162.4)



Collection Of Documents Regarding
William J.S. Henderson And His Family
(1983.66.2)

Collection Of Documents Regarding
William J.S. Henderson And His Family
[Duplicate] (1983.66.21)

Collection Of Documents Regarding
William J.S. Henderson And His Family
[Duplicate] (1983.66.22)



Travelers next to their vehicle
(1983.77.52)



Proceedings of the Board of Health
(1983.92.1)



Aldine, Alice and Delta Dove
(1984.80.11)

Marriage Records Mesa County,
Colorado (1984.9.1)



A Canyon, Coal, and A Railroad: The
Story of Carpenter, Colorado
(1985.114.1)



"The Conservationist" by Jack Roberts
(1985.131.24)



Photo of Jessie Irene Lloyd (1986.26.1)



Photo of Sidney Brooks Lloyd and
party with horse drawn wagon
(1986.26.14)



Tap Shoes (1988.51.2)



1988.6.1 (front)
Windsor Bar Bottle (1988.6.1)



Metal Token. The Tibbs Cigar Co.
Grand Junction Colo. (1989.124.481)



Ina Dyer Oral History (199.1978)

Ina Dyer Oral History [Duplicate]
(199.19781)



Photo of log structures with
automobile (1990.8.21)



Photo of 16 unidentified individuals
(1990.8.23)



Sidesaddle (1991.109.1)



Xerox of Julia Harris's experience
(1991.34.3)



Petticoat (1994.0.66)



Petticoat (1994.0.67)



Saddle Bag (1994.25.2)



Saddle Bag (1994.25.3)



Blouse (1994.92.2)



J.A.K. Crawford's Letterhead for a bill-
of-sale (1995.72.10)

1901 United States Map (1996.76.1)



Black Velveteen Dress (1999.55.1)



Photo and negative, Interior of the Fair
Store (1999.8.34)



Photo and negative, Interior of the Fair Store (1999.8.35)



Drawing of William Moyer (1999.8.51)



Blouse (1H67)



John Fritz Becker Oral History, Zelma Parkes Oral History (200.1977)



Oil painting on pine slab (2000.37.1)



Oil painting on pine slab (2000.37.2)



Dean & Jorry Portrait (2001.27.7)



Abstract of Title (2001.49.1)



Hattie Pearson Portrait (2004.44.1052)



Harry Knight (2004.44.1064)



Chipeta (2004.44.1074)



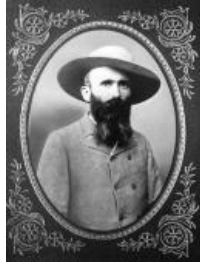
Dean Studio (2004.44.131)



Loma School (2004.44.233)



Frank Dean (2004.44.29)



Wallace DeBeque (2004.44.32)



Early day Grand Junction (2004.44.5)

Early day Grand Junction [Duplicate]
(2004.44.510)

Early day Grand Junction [Duplicate]
(2004.44.511)



Sugar beet factory (2004.44.771)



GJHS football team (2004.44.820)

GJHS football team [Duplicate]
(2004.44.8201)

GJHS football team [Duplicate]
(2004.44.8202)



GJHS football team (2004.44.834)

GJHS football team [Duplicate]
(2004.44.8341)

GJHS football team [Duplicate]
(2004.44.8342)



John Otto (2004.44.849)



Cardiff School (2004.44.92)



Teller Indian School Band (2006.0076)



"Interesting Facts about Sugar"
(2006.43.4)



James Nelson and Son (2007.11.1)



Baby Dress (2014.95.19)



Skirt (2014.95.20)



Drawers (2014.95.21)



Judge Joseph Ong Portrait (2018.113)



Blouse (2018.34.1)



9 Mile Hill in Unawee (2019.16.1)



Scene in Unaweep Canyon (2019.16.2)



Chaps (2019.48.1)



Elva Hughes and dog (2019.8.2)



Rufos Hirons Oral History (202.1978)



Sensitized Postcard Paper (2020.43.8)



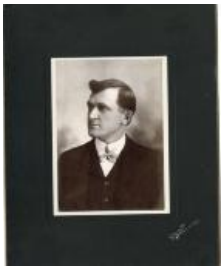
Beaded Ute Belt (2020.85.2)



The Making of "One Bike" Opera
(2021.22.1)



Group in front of large rocks
(2021.24.29)



Unidentified man (2021.24.35)



Portrait of a baby (2021.24.37)



Harry Bengtson in front of store
(2021.24.64)



Photo of Park Opera House (2022.0.3)



de Beque Public Schoolhouse
(2022.25.1)



de Beque Public Schoolhouse
(2022.25.2)



Dean Studio Table (2022.3.1)



Dean Studio Child's Chair (2022.3.2)



Charlie Glass on his horse (2023.33.1)



Charlie Glass with a man and woman
(2023.33.10)



Charlie Glass and a group of cowboys
(2023.33.2)



Charlie Glass on a black horse
(2023.33.3)



Charlie Glass on a black horse
(2023.33.6)



Charlie Glass with two men
(2023.33.9)



Photo of a girl and her apples
(2023.40.10)



Boy with cherries at Knight's Orchard
(2023.40.11)



Portrait of a family (2023.40.12)



Orchard Scene (2023.40.15)



Farm Scene (2023.40.18)



Photo of a young woman (2023.40.25)



Onions from the Mile High Seed Co.
(2023.40.26)



Trout from Cebolla, CO (2023.40.28)



Portrait of an Older Woman
(2023.40.29)



Portrait of an older woman
(2023.40.30)



Portrait of a young woman
(2023.40.31)



Portrait of a young woman
(2023.40.32)



Portrait of a Soldier (2023.40.33)



Portrait of Mother and Daughter
(2023.40.34)



Portrait of Miss Binder (2023.40.35)



Portrait of Mrs. Weiser (2023.40.38)



Composite of 9 farm pictures
(2023.40.39)



Frank Dean Studio (2023.40.4)



Portrait of an Unidentified Man
(2023.40.40)



Woman dressed androgynously
(2023.40.43)



Woman dressed androgynously
(2023.40.44)



Group of young girls outside of URY
office (2023.40.45)



Portrait of Mary Dean (2023.40.46)



Interior of the Uintah Hotel
(2023.40.47)



Pack of mules in Mack (2023.40.48)



Group of men at the Uintah office
(2023.40.49)



Agriculture Scene of Valley
(2023.40.5)



Group near tracks on Baxter Pass
(2023.40.51)



Austrian Man outside Uintah Railway
Company (2023.40.52)



Stewart Cottage, Mack (2023.40.53)



Unnamed Austrian man (2023.40.54)



Man with wheelbarrow in front of the
Uintah office (2023.40.55)



Uintah Railway Office in Winter
(2023.40.56)



Group of ladies portrait (2023.40.6)



A group of people and their dog
(2023.40.7)



A group of people and their dog
(2023.40.8)



Apple Scene (2023.40.9)



Navy Jacket (2023.42.83)



Switch of Hair (2023.42.94)



Elijah and Nicey Hiens (2023.48.1)



Portrait of an unidentified man
(2023.48.21)



Memorial portrait of Clark Hines
(2023.48.24)



Births and Marriages page from the
Butler Family Bible (2023.48.26)



Elijah and Nicey Hines (2023.48.7)



Oral History Charles and Catherine
Moore (203.1977)



Andrew Riddle Oral History (204.1978)



Forrest Carhartt Oral History
(207.1978)



Arvid Muhr Oral History (208.1978)



Frosty Tilton Oral History (209.1978)



Marie Young Oral History (210.1979)



C.B. Aupperle Oral History (211.1979)



Reuben Pitts Oral History (212.1979)



Pavetti & Van Dyke Oral History
(213.1979)



Program on Folklore (215.1979)



Oral History with Jim Franklin
(216.1978)



Oral History with Gwen McKee
(217.1978)



Margaret Golden Oral History
(218.1978)



Irene Gramlich Oral History
(219.1979)



Elizabeth McCullah Oral History
(220.1978)



Bunk Weimer Oral History (221.1979)



Lucille Mahannah Oral History
(222.1979)



Helen Wilson Oral History (224.1979)



Edward Martin Oral History
(225.1979)



Oral History Eda Musser (226.1978)



Jean Page Oral History (227.1979)



Jean Urruty Oral History (228.1978)



Dale Luke Oral History (229.1979)



Joe Fox Oral History (230.1979)



Frank Wright Oral History (231.1978)



Oral History Lizzie Anderson
(233.1979)



Bill Raber Oral History (234.1979)



Marie Young Oral History (237.1979)



Joel & Jenny Brewster Oral History
(238.1978)



J.W. Latham Oral History (239.1979)



Dr. Addie Maynard Oral History
(240.1978)



Jean Page Oral History (241.1979)



WJ Pray Oral History (242.1979)



Art Brodak Oral History (246.1979)



Ethel Hotchkiss Oral History
(247.1979)



Oral History Ellsworth Guy (248.1979)



A. L. Guerrie Oral History (249.1979)



Grand Junction Depression (25.1971)



Daisy Green Oral History (250.1979)



Merle Winters Oral History (253.1978)



Armand De Beque Oral History
(254.1979)



Oral History of Morgan Goss
(257.1979)



Howard Hafey Oral History (259.1979)



Hubbard & Livingston Oral History
(274.1979)



Oral History of Anna Gallegos
(277.1979)



Craig & Devine Oral History
(284.1979)



Edna Brenton Oral History (285.1979)



June and Levi Morse Oral History
(286.1979)



Gateway History & Cowboy Poetry
(287.1979)



Lampert Oral History (288.1979)



Louis Balliger Oral History (289.1979)



Sarah Gowen Oral History (291.1979)



Shults Oral History (292.1979)



Dr. Matteroli Oral History (294.1979)



Lee Toothaker Oral History (295.1979)



C. H. Buttolph Oral History (296.1979)



Dr. Bull's Residence (2HA1.1)



Black and White photo of Aspen Colorado (2HA17.6)



Black and white photo of Mrs. Jim Bean (2HA292.1)



Black and white photo of Mr. Jim Bean (2HA292.2)



Car outside barn (2HA65)



Oral History Bill Raber (301.1979)



Oral History of Sarah Livesay (302.1980)



Oral History of Dudley Mitchell (303.1978)



Oral History of Dudley Mitchell (304.1978)



Oral History of Charles Smelzer (306.1979)



Oral History of Margaret Stump
(307.1980)



Oral History of Rudy and Fannie Ruth
Susman (308.1980)



Program on Fruita and Interurban
(310.1980)



Oral History with Josephine Biggs
(312.1980)



Oral History of Katherine Fuoco
(313.1979)



Oral History with Ruth Hoffman
(314.1980)



Oral History with Len & Violet
Haseman (319.1983)



Dairy Industry In Grand Junction
(33.1975)



Financial Institutions of Mesa County
(375.1980)



Loudene Humeston Oral History
(377.1978)



Program on Railroads (381.1980)



Program on Architecture (382.1980)



Early Education Program (384.1980)



Julia Harris Oral History (400.1980)



Fruita - Early Settlers (41.1975)



Palisade History And Fruit Growing
(43.1977)



Development Of Grand Valley
(Parachute) (44.1977)



Early Day Social Worker (45.1977)



Brown's Park & Butch Cassidy
(452.1982)



History of Jaynes And Borschell
Families (46.1978)



Armand De Beque Oral History
(462.1981)



Program on Early Entertainment
(463.1981)



Wanda and Paul Brechler Oral History
(464.1981)



Gertrude Rader Oral History
(465.1981)



Program on the Collbran and Plateau
Valley Area (469.1981)



Oral History with Bailey & Shaw
(471.1981)



Walter Simineo Oral History
(472.1981)



Wayne Aspinall Oral History
(473.1981)



Carl Dewey Oral History (474.1981)



Albert Phillips Jr. Oral History
(475.1981)



William Whatley Oral History
(476.1982)



Ruth Tilton Oral History (477.1982)



Al Look Oral History (479.1981)



Early Palisade (48.1977)



Jo Ferguson Oral History (480.1982)



Emma Conner Oral History (481.1982)



Charlotte Claar Oral History
(482.1980)



Jo Ferguson Oral History (483.1982)



Roy Dinkins Oral History (484.1981)



Early Black Residents - Oral History
with Josephine Dickey (49.1977)



Program on George Crawford
(494.1982)



100 Years of Mesa County Government
- Panel Presentation (495.1982)



Al Look Oral History (498.1982)



Fruit Grower And Cattle Man
(50.1977)



Sylvia Ruland Oral History (508.1982)



Early Homesteading And Teaching
(51.1977)



Homesteading And Family Life
(52.1977)



Oral History with Josephine Dickey
(529.1981)



Development Of A Cowboy (53.1977)



Ruth Echternach Oral History
(531.1982)



Dottie Lamm to Women's Network
Centennial Luncheon (533.1982)



Molly Stucker Oral History (536.2002)



Influential People And Leaders
(54.1976)



Grand Junction's First Radio &
Television Stations (57.1975)



Sheep & Cattle Ranching in Cisco
(58.1977)



Early Sheep And Cattle Experiences
(59.1977)



Pioneer Educator And Civic Leader
(60.1977)



Reminiscences of Mesa County
Doctors (64.1971)



Early Whitewater (66.1977)



Homestead In Horsethief
Canyon/Plateau Valley (67.1977)



Beginnings Of Grand Junction
(69.1977)

Beginnings Of Grand Junction
[Duplicate] (69.19771)



Early Whitewater Ranch Life (85.1977)



Early Grd. Jct. Citizens And Businesses
(89.1977)



A437

Bundt Cake Pan (A437)



Bodice (A922)



Maroon Blouse (A923)



Ladies Blouse (A939.1)



Bodice (A975)



Bodice (A999)



Lady's Blouse (B104)



Lady's Petticoat (B121)



Lady's Blouse (B191)



Child's Blouse (B369)



Lady's Blouse (B40)



Lady's Blouse (B44)



Baby Dress (B497.3)



Jacket (B54)



Dress (B59)



Navajo Rug (B614.1)



Lady's Bodice (B65)



Bodice (B67)



Lady's Blouse (B80)



Slip (B92)



Lady's Blouse (B95L)



Native American Handmade Artifacts
(C557.1)



Decorated Hide (C557.2)



Decorated Hide (C557.3)



Native American Handmade Artifacts
(C557.4)



Native American Handmade Artifacts
(C557.5)



Fowler Picking Sack (CU 1986.40.1)



Wrapper/Nightgown (D239)



Skirt (D249)



Blouse (D270)



Blouse (D32.1)



Guimpe (D32.17)



Bodice (D32.4)



Blouse (D396A)



Skirt (D396B)



Blouse (D398)



Blouse (D999)



Blouse (E71)



Mauve Dress (E72)



Blouse (E91)



Blouse (E92)



Blouse (E94)



Lowell school / jail (F0520)



Grand Junction High School
Graduates, 1901 (F205.1)

Grand Junction High School
Graduates, 1901 [Duplicate] (F205.11)

Grand Junction High School
Graduates, 1901 [Duplicate] (F205.12)



Ute Prisoner Surrender Tree (F230.1)



Ute Prisoner Surrender Tree (F230.2)



Sugar Beet Factory (F343.1)



Sugar Beet Factory (F343.2)



Sugar Beet Factory (F343.3)



Ute Camping Trip (F347.1)



Teller Institute Band in Doorway of
Grand Valley National Bank (F473.1)



Teller Institute Band (F473.2)



Carpenter excursion (F515.3)



Carpenter excursion (F515.5)



Teller Institute Girls Mandolin Club
(F627.1)



Lasswell Family at the Crossroads at
Mesa (F64.1)



Grand Junction Railroad Station &
Yards, 1900-1920 (F720.57)



Grand Junction Railroad Station
(F720.59)

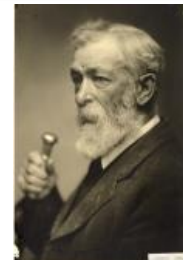


Gladys Currie Infant Photo (F720.7)

Dry Creek Cowboys at Dinner (F801.1)



Photograph of Downtown Grand
Junction (F827.2)



Judge Ong Portrait (F90.1)



Blouse (H549)



Morning Dress (H565)



Woodworkers' Plane (H761A)



Woodworkers Plane (H761C)



Blade box (H761D)



White Purse (X122)



Purse (X124)