



Old pumping plant (1979.23.115)



Cross Orchards Barn (1979.59.1)



Cross Orchards Barn (1979.59.2)



Cross Orchards Barn (1979.59.3)



Man and Woman Outdoors
(1980.153.18)



Man in Navy Uniform with Woman
(1980.153.3)



Woman in Pink Outfit (1980.153.31)



Portrait of a Young Girl (1980.153.6)



Unidentified Family Photo
(1980.153.8)



"Last Squad" (1982.135.2)



Wayne Aspinall and his wife
(1982.135.4)



AEC Grand Junction Compound from
Reservoir Hill (July 1963)
(1983.63.197)



Barbwire fence going down to river -
AEC Compound (1983.63.198)



Black Bridge over Gunnison River +
Negative (1983.63.199)



Interior of building with last drums
from U3 08 (1983.63.20)



Chain link fence Southeast end +
negative (1983.63.200)



Barbwire across dike + negative
(1983.63.201)



Barbwire along dike + negative
(1983.63.202)



Three wheeler in front of RR Track and
drums + negative (1983.63.203)



Barbwire East side of AEC Compound
+ negative (1983.63.204)



Barbwire to river AEC Compound +
negative (1983.63.205)



Black Bridge over Gunnison River +
negative (1983.63.206)



Barbwire corner East side + negative
(1983.63.207)



Trailers with drums in background +
negative (1983.63.208)



AEC Compound from the West + negative (1983.63.209)



AEC uranium ore test anomaly at Walker Field Airport (1983.63.21)



Black Bridge area + Negative (1983.63.210)



Barbwire on dike + negative (1983.63.211)



Wide angle looking Southeast at AEC Compound. Gunnison River in center of picture, Redlands Canal in foreground (29 Sep 1966) + negative (1983.63.212)



AEC Float in Foresight Parade (18 May 1963) (1983.63.213)



South gate building AEC (1983.63.214)



South gate building AEC (1983.63.216)



Stack of Drums (1983.63.217)



Stack of drums (1983.63.218)



Corner of log cabin - Managers office (1983.63.219)



Manager's Office (1983.63.220)



Lucius Pitkin Mining Division Building
(1983.63.221)



Lucius Pitkin Mining Division Building
(1983.63.222)



Loading docks (1983.63.223)



Loading docks [Duplicate]
(1983.63.224)



Gate Entrance (1983.63.225)



U.S. Atomic Energy Commission,
Grand Junction, CO Office sign by gate
entrance (1983.63.226)



South Gate building and gate
(1983.63.227)



South Gate building (1983.63.228)



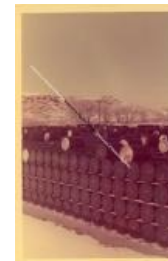
Office (1983.63.229)



Silo (1983.63.230)



Silo with drums in background
(1983.63.231)



Uranium concentrate drum storage at
AEC (1983.63.24)



Drum storage stack at AEC
(1983.63.25)



Drum storage at AEC (1983.63.26)



Drum storage at AEC (1983.63.27)



Drum storage stack at AEC
(1983.63.28)



Drum storage stack at AEC
(1983.63.29)



Rows of drums AEC (1983.63.30)



Rows of drums AEC (1983.63.31)



Closeup of drum at AEC (1983.63.32)



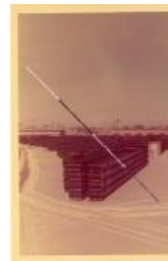
View of drums from dike (1983.63.33)



Hyster operator carrying two drums
up ramp for loading in freight car
(1983.63.34)



AEC Compound uranium concentrate
drum storage (1983.63.35)



Rows of Drums (1983.63.36)



Drums in snow (1983.63.37)



Rows of drums looking East
(1983.63.38)



Rows of drums looking North
(1983.63.39)



Rows of drums looking Northeast
(1983.63.40)



DF car #65252 ready for first load of
concentrate to Fernald, Ohio
(1983.63.42)



Rio Grande DF car being loaded with
concentrate for shipment to Fernald,
Ohio (1983.63.43)



Finishing loading of car for shipment
to Fernald, Ohio (1983.63.44)



Picking up drum East of Sample plant
AEC (1983.63.45)



Rio Grande DF car being loaded with
Hyster (1983.63.46)



Loading DF car long view can #65215
(1983.63.47)



Climax uranium stack demolition 24
Nov 1970 (old sugar factory area)
(1983.63.49)



Base of stack (1983.63.50)



Stack standing with buildings
(1983.63.51)



Start blasting (1983.63.52)



Blasting (Photo) (1983.63.53)



Stack starting to fall (Photo)
(1983.63.54)



Stack down (Photo) (1983.63.55)



Stack down lots of dust (Photo)
(1983.63.56)



Stack down on ground (Photo)
(1983.63.57)



Stack base in pile, building (Photo)
(1983.63.58)



Large pile of rubble (Photo)
(1983.63.59)



Old Sugar Beet Building (Photo)
(1983.63.60)



Mill site looking East (Photo)
(1983.63.61)



Man looking for uranium (1983.63.76)



Firetruck at AEC Photograph
(1983.63.80)



Uranium Drilling (Photo) (1983.63.85)



Uranium Drilling (Photo) (1983.63.86)



Uranium Drilling closeup (Photo)
(1983.63.87)



Yellow Cake Dryers Photograph
(1983.78.1)



UF6 Plant Photograph (1983.78.10)



Uranium Ore Storage Photograph
(1983.78.11)



Open Pit Mining Photograph
(1983.78.12)



Uranium Miner Photograph
(1983.78.13)



Uranium Mine Photograph
(1983.78.14)



Miners Photograph (1983.78.15)



Drill Hole Photograph (1983.78.2)



Core Drilling Photograph (1983.78.3)



Drilling Photograph (1983.78.4)



Shiprock Mill Photograph (1983.78.5)



Navajo Miner Camp Photograph (1983.78.6)



Ambrosia Lake Mill Photograph (1983.78.7)



Petrotomics Mill Photograph (1983.78.8)



UF6 Cylinder Photograph (1983.78.9)



Panoramic view of Palisade (1984.49.1)



Panoramic view of Palisade (1984.49.2)



Photo of the demolition of Western Slope Auto (1987.89.1)



Color Photo of the demolition of Western Slope Auto (1987.89.10)



Color Photo of the demolition of Western Slope Auto (1987.89.11)



Color Photo of the demolition of Western Slope Auto (1987.89.12)



Color Photo of the demolition of Western Slope Auto (1987.89.13)



Color Photo of the demolition of Western Slope Auto (1987.89.14)



Color Photo of the demolition of Western Slope Auto (1987.89.15)



Color Photo of the demolition of Western Slope Auto (1987.89.16)



Color Photo of the demolition of Western Slope Auto (1987.89.17)



Color Photo of the demolition of Western Slope Auto (1987.89.18)



Color Photo of the demolition of Western Slope Auto (1987.89.19)



Photo of the demolition of Western Slope Auto (1987.89.2)



Color Photo of the demolition of Western Slope Auto (1987.89.20)



Color Photo of the demolition of Western Slope Auto (1987.89.21)



Color Photo of the demolition of Western Slope Auto (1987.89.22)



Color Photo of the demolition of Western Slope Auto (1987.89.23)



Color Photo of the demolition of Western Slope Auto (1987.89.24)



Color Photo of the demolition of Western Slope Auto (1987.89.3)



Color Photo of the demolition of Western Slope Auto (1987.89.4)



Color Photo of the demolition of Western Slope Auto (1987.89.5)



Color Photo of the demolition of Western Slope Auto (1987.89.6)



Color Photo of the demolition of Western Slope Auto (1987.89.7)



Color Photo of the demolition of Western Slope Auto (1987.89.8)



Color Photo of the demolition of Western Slope Auto (1987.89.9)



Photo and negative of California Zephyr dome car (1990.10.34)



Photo and negative of California Zephyr dome car with trees (1990.10.35)



Photo and negative of California Zephyr dome car (1990.10.36)



Photo of Main street, Grand Junction
with street cars (1990.10.47)



Photo and negative of Denver & Rio
Grande Western Ry baggage car and
C&S coach (1990.10.74)



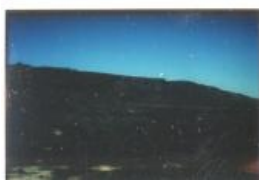
Photo and negative of Denver & Rio
Grande Western Ry caboose
(1990.10.75)



Photo and negative of Rio Grande
Western Ry train No. 75 (1990.10.76)



Group of People outside of Whitman
School (1990.11.2)



Slide of Fruita Paleo Area (1990.9.1)



Slide of a Sphenodon punctatus
(1990.9.10)



Slide of a Sphenodon punctatus
(1990.9.11)



Slide of Sphenodon punctatus,
duplicate (1990.9.12)



Slide of Fruita Paleo Area (1990.9.2)



Slide of Fruita Paleo Area (1990.9.3)



Slide of Fruita Paleo Area (1990.9.4)



Slide of Fruita Paleo Area (1990.9.5)



Slide of Morrison Formation (1990.9.6)



Slide of unidentified individual next to rocks (1990.9.7)



Slide of Morrison Formation (1990.9.8)



Slide of a tuatara (1990.9.9)



President Gerald Ford (1993.120.1)



Gerald Ford and ladies (1993.120.2)



Gerald Ford's visit (1993.120.3)



Gerald Ford and man (1993.120.4)



President Gerald Ford (1993.120.5)



Gerald Ford (1993.120.6)



Gerald Ford (1993.120.7)



Nelson Rockefeller (1993.120.8)



Wayne Aspinall & unidentified man
(1993.120.9)



Ben Nighthorse Campbell (1996.78.11)



Linda Schooley (1996.78.20)



Bob Dole (1996.78.7)



Mesa County Republicans (1996.78.8)



Men on stone house (1997.17.3)



GJ High Band at Days of '47 Parade
(1997.62.1)

GJ High Band at Days of '47 Parade
[Duplicate] (1997.62.11)

GJ High Band at Days of '47 Parade
[Duplicate] (1997.62.12)



Train engine (1997.8.54)



Train in canyon near Delta (1997.8.67)



little Theatre Players (1999.37.4)



Laurent family (1999.39.1)



249 Grand Ave. (1999.39.2)



249 Grand Ave (1999.39.3)



DARE banner (2001.41.11)



Police Training (2001.41.12)



GJPD BADGES (2001.41.13)



GJPD Breath Alcohol Testing Vehicle
(2001.41.16)



GJPD Vehicles (2001.41.18)



Loyd and Cordelia Files (2001.72.2)



Lillian S. Moore (2003.75.2)



Roller Dam (2004.44.180)



Roller Dam (2004.44.181)



Walker Field (2004.44.198)



Mesa State College (2004.44.201)



Mesa State College/Colorado Mesa University (2004.44.202)



Mesa State College Monument Sign (2004.44.203)



Mesa State College (2004.44.204)



Loma School (2004.44.233)



Loma School Staff (2004.44.234)



Lomas School Staff (2004.44.235)



Loma School Staff (2004.44.236)



Loma School Staff (2004.44.237)



Loma School Staff (2004.44.238)



Loma School Staff (2004.44.239)



Loma School Staff (2004.44.240)



Loma School Staff (2004.44.241)



Loma School Staff (2004.44.242)



Loma School Staff (2004.44.243)



Orchard Mesa Middle School Staff
(2004.44.245)



Orchard Mesa Middle School Staff
(2004.44.246)



Orchard Mesa Middle School Staff
(2004.44.247)



Orchard Mesa Middle School Staff
(2004.44.248)



Orchard Mesa Middle School Staff
(2004.44.249)



Orchard Mesa Middle School Staff
(2004.44.250)



Orchard Mesa Middle School Staff
(2004.44.251)



Watson Island (2004.44.253)



Watson Island (2004.44.254)



Watson Island Sculpture (2004.44.255)



Watson Island Sculpture (2004.44.256)



Watson Island Trail (2004.44.257)



Watson Island Walking Trail
(2004.44.258)



Watson Island Walking Trail
(2004.44.259)



Watson Trail (2004.44.260)



Watson Island (2004.44.261)



Watson Island Sign (2004.44.262)



Watson Island Trailhead (2004.44.263)



Watson Island (2004.44.264)



Palisade High School Staff
(2004.44.265)

Palisade High School Staff [Duplicate]
(2004.44.2651)

Palisade High School Staff [Duplicate]
(2004.44.2652)



Palisade High School Staff
(2004.44.266)

Palisade High School Staff [Duplicate]
(2004.44.2661)

Palisade High School Staff [Duplicate]
(2004.44.2662)



Palisade High School Staff
(2004.44.267)

Palisade High School Staff [Duplicate]
(2004.44.2671)

Palisade High School Staff [Duplicate]
(2004.44.2672)



Palisade High School Staff
(2004.44.268)

Palisade High School Staff [Duplicate]
(2004.44.2681)

Palisade High School Staff [Duplicate]
(2004.44.2682)



Palisade High School Staff
(2004.44.269)

Palisade High School Staff [Duplicate]
(2004.44.2691)

Palisade High School Staff [Duplicate]
(2004.44.2692)



Palisade High School Staff
(2004.44.270)

Palisade High School Staff [Duplicate]
(2004.44.2701)

Palisade High School Staff [Duplicate]
(2004.44.2702)



Palisade High School Staff
(2004.44.271)

Palisade High School Staff [Duplicate]
(2004.44.2711)

Palisade High School Staff [Duplicate]
(2004.44.2712)



Palisade High School Staff
(2004.44.272)

Palisade High School Staff [Duplicate]
(2004.44.2721)

Palisade High School Staff [Duplicate]
(2004.44.2722)



Palisade High School Staff
(2004.44.273)

Palisade High School Staff [Duplicate]
(2004.44.2731)

Palisade High School Staff [Duplicate]
(2004.44.2732)



Palisade High School Staff
(2004.44.274)

Palisade High School Staff [Duplicate]
(2004.44.2741)

Palisade High School Staff [Duplicate]
(2004.44.2742)



Palisade High School Staff
(2004.44.275)

Palisade High School Staff [Duplicate]
(2004.44.2751)

Palisade High School Staff [Duplicate]
(2004.44.2752)



Palisade High School Staff
(2004.44.276)

Palisade High School Staff [Duplicate]
(2004.44.2761)

Palisade High School Staff [Duplicate]
(2004.44.2762)

Palisade High School Staff
(2004.44.277)

Palisade High School Staff [Duplicate]
(2004.44.2771)

Palisade High School Staff [Duplicate]
(2004.44.2772)



Western Rockies Eye Center
(2004.44.286)



Dalby Wendland & Co Staff
(2004.44.287)



R-5 High School Staff (2004.44.290)

R-5 High School Staff [Duplicate]
(2004.44.2901)

R-5 High School Staff [Duplicate]
(2004.44.2902)



R-5 High School Staff (2004.44.291)

R-5 High School Staff [Duplicate]
(2004.44.2911)

R-5 High School Staff [Duplicate]
(2004.44.2912)



Daily Sentinel Centennial Float
(2004.44.295B)



Centennial Float (2004.44.296B)



Santa at the Sentinel (2004.44.299)



Santa at the Sentinel (2004.44.300)



Santa at the Sentinel (2004.44.301)



Easter Egg Hunt at Daily Sentinel
(2004.44.302)



Easter Egg Hunt at Daily Sentinel
(2004.44.303)



Easter Egg hunt at the Daily Sentinel
(2004.44.304)



Party at Moon Farm (2004.44.305)



Party at MoonFarm (2004.44.306)



Party at MoonFarm (2004.44.307)



Party at MoonFarm (2004.44.308)



Party at MoonFarm (2004.44.309)



Party at MoonFarm (2004.44.310)



Party at MoonFarm (2004.44.311)



Party at MoonFarm (2004.44.312)



Party at Moon Farm (2004.44.313)



Party at MoonFarm (2004.44.314)



Party at MoonFarm (2004.44.315)



Party at MoonFarm (2004.44.316)



Party at MoonFarm (2004.44.317)



Party at MoonFarm (2004.44.318)



Party at MoonFarm (2004.44.319)



Party at MoonFarm (2004.44.320)



Party at MoonFarm (2004.44.321)



City Hall (2004.44.739)



Alpine Bank building (2004.44.740)



Wildflowers on Glade Park
(2004.44.741)



Glade Park (2004.44.742)



Wine Bottles and Medals (2005.49.35)



Ivancie and their Award-Winning
Wines (2005.49.38)



Ivancie and their Award-Winning
Wines (2005.49.39)



Ivancies and a Certificate (2005.49.40)



Ivancies and a Certificate (2005.49.41)



Wine Display (2005.49.42)



Randy Smith (2006.1.420)



Eula Boelke (2006.123.4144)



Ben Campbell (2006.123.4449)



Uranium/Vanadium mill at Uravan
(2006.141.1)



Charles Huskon (2006.141.10)



LaSalle Shaft (2006.141.11)



Ore Buying Station (2006.141.12)



AECs Green River Exploration Camp
(2006.141.13)



Uravan Small Operation (2006.141.14)



Shafer Trail Road (2006.141.15)



Big Indian Exploration Camp
(2006.141.16)



Slick Rock Hill (2006.141.2)



Uranium Vanadium Mine at Uravan
(2006.141.3)



Badger Mine (2006.141.4)



Vernon Pick's Delta Mine (2006.141.5)



Cal Uranium Company Shaft
(2006.141.6)



Golden Cycle Shaft (2006.141.7)



Mi Vida Mine (2006.141.8)



Shafter Trail Road (2006.141.9)



Bridgeport bridge (2006.18.1)



Winifred Raber at Bridgeport
(2006.18.3)



Winifred Raber (2006.18.4)



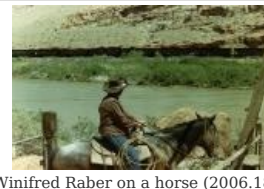
Bridgeport bridge- (2006.18.5)



Bridgeport bridge (2006.18.6)



Bridgeport bridge (2006.18.7)



Winifred Raber on a horse (2006.18.8)



Bridgeport bridge (2006.18.9)



Ponyride (2006.30.1)



McMullin Home 2003 Home Tour
(2006.55.10)



Canal (2007.21.4)



Helen McElroy-Lopas (2007.95.1)



1948 GJHS Class in 2003 (2008.16.1)

1948 GJHS Class in 2003 [Duplicate]
(2008.16.11)

1948 GJHS Class in 2003 [Duplicate]
(2008.16.12)



1948 GJHS Class in 2003 (2008.16.2)

1948 GJHS Class in 2003 [Duplicate]
(2008.16.21)

1948 GJHS Class in 2003 [Duplicate]
(2008.16.22)



Redstone Great Hall (2008.20.5)



GJ Railroad yards (2008.24.1)



GJ aerial 1992-93 (2008.24.2)



Oil Rig (2008.32.1)



Oil rig (2008.32.2)



Save the Tree (Dr. Mary Moore)
(2008.34.1)



Carol in the Kitchen (2008.34.2)



Rob Kurtzman (2008.34.3)



Florence Bock 7-22-97 (2008.42.1)



Color portrait of Florence Bock
(2008.42.2)



IOOF Building (2008.70.1)



Crawford tomb - east side (2008.70.14)



Crawford's tomb w/Grand Valley in
background (2008.70.17)



Crawford tomb close-up (2008.70.18)



Crawford tomb - east side (2008.70.19)



Kent-McClintock tombstones
(2008.70.3)



Portrait of Peal N Jayne. (2008.76.2)



La Court Hotel (2009.30.4)



Color portrait of Pete "Hausearigue"
(2018.15.12)



Color photo of Basque House
(2018.15.13)



Color portrait of Pete Hausearigue
and Toribia Coscouza Hausearigue
(2018.15.14)



Color portrait of Judith Lauren Arriza
Wing (2018.15.17)



Color portrait of Anna Louise Barkuloo
(2018.15.32)



Photo of Orchard/Vineyard
(2019.8.101)



Photo of Vineyard (2019.8.102)



Family Portrait Photo, "Hicks Family 1960" (2019.8.51)



Shirley Arthur & artist Norma Jean Ortiz (2021.10.4)



Shirley Arthur and Jim Eppler (2021.10.46)



Photo/plaque commemorating the opening of Hotel Maverick (2021.12.10)



Photo of John Hickenlooper, Steve Anafresca, Steve King, Cecil Hernandez, and Tim Foster (2021.12.11)



Photo of John Hickenlooper, Tim Foster, and the CMU Board of Trustees (2021.12.12)



Framed photo and letter about Mesa State College (2021.12.13)



Archuleta Engineering Center sign and group of people (2021.12.23)



De Beque House (2021.20.1)



Man in Benge's shoe store (2021.24.77)



Benge's Shoe Store Interior (2021.24.78)



Benge's shoe store Interior (2021.24.79)



Seating inside Benge's shoe store
(2021.24.81)



Interior of Benge's Shoe Store
(2021.24.82)



Shoppers in Benge's shoe store
(2021.24.83)



Sheep in pen for shearing (2023.29.11)



Shearing Sheep (2023.29.13)



Sheep Shearing (2023.29.14)



Sheep Shearing Wagon (2023.29.15)



Bagging Wool (2023.29.16)



Shearing Sheep in the Wagon
(2023.29.18)



McIntyre sheep on pasture (2023.29.3)



Picture of Sheep (2023.29.4)



Sheep in a pen (2023.29.5)



Lamb and Ewe (2023.29.6)



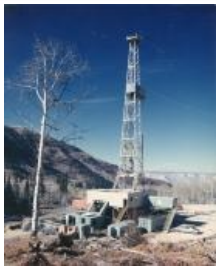
Sheep pens (2023.29.7)



Ewes and lambs (2023.29.8)



Larry McIntyre working in sheep pen
(2023.29.9)



Astral Oil Co.'s Drilling Rig at Rulison
(2HA161.10)



Project Rulison Los Alamos Scientific
Laboratory Well (2HA161.11)



Two shots of the Los Alamos Scientific
Laboratory Well Rig (2HA161.12)



Project Rulison Yellow and Blue
Striped Tent (2HA161.2)



Project Gasbuggy Atomic Warhead
(2HA161.3)



Rulison Los Alamos Scientific
Laboratory Well Shot (2HA161.5)



Project Rulison Parking Area
(2HA161.6)



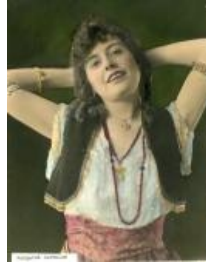
Rulison Los Alamos Scientific
Laboratory Well Shot (2HA161.7)



Project Rulison Air Force Helicopters
(2HA161.8)



Panoramic Photograph of Grand Valley
Fruit Belt (2HA2)



Portrait of Margaret Barkuloo
(F0617.1)



Snowy Highway on the Colorado
Rockies (F582.4)



Colorado National Monument
Independence Rock (F582.5)



Palmer Homestead (F712.1)