



Oral History with Nellie Sewell,  
Carbondale Area (1.1976)



Dominick Arcieri Oral History  
Interview (101.1976)



Oral History with Evelyn Beatty  
(102.1978)



Western Homemaker's Life And Work  
(103.1977)



Dorothy Kittle Oral History (104.1977)



Oral History Will Minor and Lee  
Warner (105.1976)



Oral History of Charles Edward  
Thomas (107.1976)



Oral History of Tom and Helen  
Williams (108.1978)



Medicine In Collbran (109.1976)



Oral History of Wyatt Wood (113.1978)



2nd Oral History with Wyatt Wood  
(114.1978)



Craig Aupperle Oral History  
(116.1976)

Craig Aupperle Oral History  
[Duplicate] (116.19761)



Wayne Aspinall Oral History  
(120.1978)



Oral History of Karl and Nellie Linn  
(123.1977)



Craig Aupperle Oral History - Charlie  
Glass; Cattle Industry (125.1976)



Oral History Orville & Helen Altenbern  
(126.1977)



Pearl Redmon Oral History (127.1978)



Oral History with Dorothy Beard  
(128.1978)



Oral History with Armand De Beque  
(129.1979)



Early De Beque (130.1977)



Early Grand Junction (131.1978)



Oral History with Jean and Benerita  
Urruty (134.1978)



Oral History with C. B. Aupperle  
(137.1976)



Oral History with Rufus Hirons  
(138.1977)

Oral History with Rufus Hirons  
[Duplicate] (138.19771)



Oral History of Pearl Randolph  
(139.1978)



Oral History of Gertrude McKay  
(140.1977)



Oral History with Willis and Lotus  
Blevins (141.1978)



Oral History of Winifred Bull  
(142.1977)

Oral History of Winifred Bull  
[Duplicate] (142.19771)



Oral History of Anna Foster (143.1978)



Oral History of Frank Jonick  
(144.1978)



Oral History of Luella Morgan  
(145.1978)



Oral History with Dr. Munro  
(146.1978)



Oral History of Ruth Smith and Agnes  
Wright (147.1978)



Oral History with Dr. Munro  
(148.1978)



Oral History with Anna Alstatt  
(149.1978)



Oral History with Lina Mae Biggs  
(150.1977)



Oral History of Mary Corcoran  
(152.1978)



Oral History of Nevada Burford  
(153.1978)



School Memories (154.1977)



Oral History of Vern Wood (155.1977)



Oral History of Lois Saunders  
(156.1978)



Panel on Glade Park (157.1978)



Mesa County Architecture (158.1978)



Program by Dan Roberts (159.1977)



Oral History with Bob Evans  
(161.1978)



Oral History with W.B. Bruce Howard  
(163.1978)



Oral History with Dudley Mitchell  
(164.1978)



Oral History with Carl Forsman  
(166.1978)



Oral History with Charlotte Barnes  
(167.1978)



Life In Rifle, Colorado (168.1978)



Oral History of May Denton (169.1978)



Oral History of Minnie Foster  
(170.1978)



Oral History of Myrtle Hetzel  
(171.1978)



Orphan Girl's Life (172.1978)



Oral History of Veone Christine Taylor  
(174.1978)



Recalling Fruita (175.1978)



Oral History of Gracia Vogley  
(176.1978)



Oral History with Alfrieda Stevenson  
(177.1978)

Oral History with Alfrieda Stevenson  
[Duplicate] (177.19781)



Oral History with Kenneth Thompson  
(178.1977)



Oral History of Harold Shults  
(179.1977)



Panel on Kannah Creek (180.1978)



Program on the Teller Institute  
(181.1978)



Pictorial History of Grand Junction  
(182.1978)



Glade Park Oral History (183.1978)



Oral History with Darwin Burford  
(184.1978)



Oral History of Dorothy Evans  
(185.1978)



Brunk's Comedians And Tent Show  
(186.1978)



Oral History of Lulu Kennon  
(187.1978)



Weston & Nellie Massey Oral History  
(188.1978)



Teaching & Ranch Life Oral History  
(189.1978)



Jim Franklin Oral History (190.1978)



Debeque Ranching (192.1978)



Stockman's Experiences (193.1978)



Oral History Memories of Western  
Slope Life (194.1978)



School Teaching (197.1978)

School Teaching [Duplicate]  
(197.19781)



Photograph of Palisade Fire  
Department (1979.23.18)



Photo of a Suspension Bridge and  
Grand River (1979.23.39)



Photo of Palisade Peach Float  
(1979.23.79)



Dress (1979.52.1)



Oral History with C B Aupperle  
(198.1975)



Blouse (1980.10.3)



Cast Iron cooking pot (1980.107.2)



Voting Booth Canvas (1980.14.1)

Dr. Ligon Price Collection (1980.256.1)



Cross Orchards House, Barn, and  
Orchards (1980.66.17)

Doc Shores Letters (1981.115.54)

Doc Shores Letters [Duplicate]  
(1981.115.541)

Independent Lumber Company  
Records (1982.101)



Lest We Forget: A Short History of  
Early Grand Valley, Colorado,  
Originally Called Parachute, Colorado



Picnic scene (1982.213.2)



IOOF Chair (1983.162.4)





Collection Of Documents Regarding  
William J.S. Henderson And His Family  
(1983.66.2)

Collection Of Documents Regarding  
William J.S. Henderson And His Family  
[Duplicate] (1983.66.21)

Collection Of Documents Regarding  
William J.S. Henderson And His Family  
[Duplicate] (1983.66.22)



Travelers next to their vehicle  
(1983.77.52)



Roy Dove (1984.80.5)



A Canyon, Coal, and A Railroad: The  
Story of Carpenter, Colorado  
(1985.114.1)



Uintah Railroad (1987.39.1)



Train ascending Baxter Pass.  
(1987.39.10)



Mallet #51 north of Cooley  
(1987.39.11)



Engine #11 and water cars at Atchee.  
(1987.39.12)



Dragon mine near Dragon, Utah.  
(1987.39.13)



Train traveling between Columbine  
and McAndrews Lake (1987.39.14)



Mallet #51 crossing bridge into Atchee. (1987.39.15)



Dragon, Utah (1987.39.17)



Engine #30 derailed at Rainbow Junction, Utah (1987.39.18)



The Uintah Train (1987.39.19)



Uintah railroad locomotive (1987.39.2)



Travelers (1987.39.22)



Two couples gathered at Atchee, Colorado. (1987.39.23)



Rebuilding the Tracks (1987.39.24)



Bridge and building crew. (1987.39.25)



Rebuilding the tracks (1987.39.26)



Bridge and building crew of three individuals on Pass. (1987.39.27)



Watson Hotel at Watson, Utah (1987.39.28)



Travelers at Baxter Pass (1987.39.29)



Uintah crossing bridge into Watson, Utah (1987.39.3)



Uintah Train in the snow (1987.39.36)



Scene of a town and train (1987.39.38)



Dragon Mine near Dragon, Utah (1987.39.4)



Riding on a hand car (1987.39.46)



Uintah locomotive climbing 7.5% grade on Baxter Pass. (1987.39.5)



Wreck of engine #10 at bridge 2A. (1987.39.7)



Train descending into Baxter Pass. (1987.39.8)



4th of July excursion train. (1987.39.9)



Metal Token. The Tibbs Cigar Co. Grand Junction Colo. (1989.124.481)



Ina Dyer Oral History (199.1978)

Ina Dyer Oral History [Duplicate]  
(199.19781)



Photo of log structures with  
automobile (1990.8.21)



Photo of 16 unidentified individuals  
(1990.8.23)



Photo of Uintah Railway (1990.8.4)



Uintah Train in Snow Wreck  
(1991.11.8)



Xerox of Julia Harris's experience  
(1991.34.3)

Significant Errors in Lisa Godfrey's  
Thesis on Calamity Mesa (1992.6.1)



Park Opera House (1992.95.1)



Park Opera House (1992.95.2)



Silver Tray (1993.49.1)



Sauceboat Tray (1993.49.2)



Gravy Boat (1993.49.3)



Gravy Boat Lid (1993.49.4)



Sugar Bowl (1993.49.6)



Black Velvetreen Dress (1999.55.1)



Photo and negative, Interior of the Fair Store (1999.8.34)



Drawing of William Moyer (1999.8.51)



Blouse (1H67)



John Otto And A Pioneer On Glade Park (20.1976)



John Fritz Becker Oral History, Zelma Parkes Oral History (200.1977)



Family having picnic (2001.27.26)



Bernice Lancaster Portrait (2001.27.3)



Abstract of Title (2001.49.1)



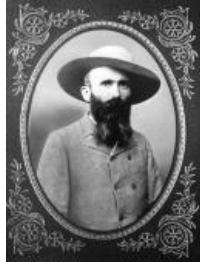
Chipeta (2004.44.1074)



Dean Studio (2004.44.131)



Frank Dean (2004.44.29)



Wallace DeBeque (2004.44.32)



Sugar beet factory (2004.44.771)



GJHS football team (2004.44.820)

GJHS football team [Duplicate]  
(2004.44.8201)

GJHS football team [Duplicate]  
(2004.44.8202)



GJHS football team (2004.44.834)

GJHS football team [Duplicate]  
(2004.44.8341)

GJHS football team [Duplicate]  
(2004.44.8342)



John Otto (2004.44.849)



Cardiff School (2004.44.92)



Rex and Nettie Kinsell (2006.1.571)

Rex and Nettie Kinsell [Duplicate]  
(2006.1.5711)

Rex and Nettie Kinsell [Duplicate]  
(2006.1.5712)



"Interesting Facts about Sugar"  
(2006.43.4)



Colorado Sugar Mill Employees  
(2006.43.5)



Skinny Aupperle (2006.88.2)



James Nelson and Son (2007.11.1)



Progress Grocery (2007.57.1)



Progress Grocery (2007.57.3)



Serpent's Trail (2009.52.7)



Chet Enstrom Oral History (201.1978)



Chinese long shirt or Cheongsam and  
skirt (2014.95.13)





Baby Dress (2014.95.19)



Red Shawl (2014.95.33)



Charles Rump Diary 1919 (2017.20.4)



YMCA Keychain and Key (2018.17.1)



Blouse (2018.34.1)



Photo of Smith farm and the Grand Mesa (2019.2.17)



Photo of Smith corral with unidentified individual (2019.2.19)



Photo of Smith cabin (2019.2.21)



Brick from St. Joe Church (2019.65.1)



Trolley Tie (2019.65.2)



Rufos Hirons Oral History (202.1978)



Beaded Ute Belt (2020.85.2)





The Making of "One Bike" Opera  
(2021.22.1)



GJ Public Schools Report Card  
(2021.23.10)



Liberty Loan Volunteer Pin  
(2021.23.199)



American Red Cross Pin (2021.23.206)



Exterior of the Benge's Shoe store  
(2021.24.11)



Portrait of a girl's group (2021.24.18)



Benge's Stained Glass (2021.24.2)



Benge's stamp (2021.24.3)



Benge's stamp (2021.24.4)



Exterior of Benge's Shoestore  
(2021.24.6)



Benge's Shoe Store Interior  
(2021.24.7)



Exterior of Benge's Shoestore  
(2021.24.8)



Photo of Park Opera House (2022.0.3)



Dean Studio Table (2022.3.1)



Dean Studio Child's Chair (2022.3.2)



Carpenter, CO (2022.4.1)



Train and boxcars at a town.  
(2022.4.10)



Little Book Cliff Railroad in Carpenter  
(2022.4.3)



A view from the Little Book Cliff  
Locomotive (2022.4.6)



The Little Book Cliff train and tracks  
stopped in between Carpenter and  
Grand Junction. (2022.4.7)



Little Book Cliff Mine & Carpenter  
(2022.4.8)



View of the Little Book Cliff en route to  
the Book Cliffs. (2022.4.9)



WWI Delta County Book (2022.87.1)



Photograph of Grand Junction  
Campfire Girls (2023.25.1)



Charlie Glass on his horse (2023.33.1)



Charlie Glass with a man and woman (2023.33.10)



Charlie Glass and a group of cowboys (2023.33.2)



Charlie Glass on a black horse (2023.33.3)



Charlie Glass and a lady (2023.33.5)



Charlie Glass on a black horse (2023.33.6)



Charlie Glass with his dog and horse (2023.33.7)



Charlie Glass with two men (2023.33.9)



Dean Studio (2023.40.37)



Frank Dean Studio (2023.40.4)



Mountain Landscape (2023.42.35)



Mountain Landscape with Horses and Riders (2023.42.36)



Mountain Landscape (2023.42.37)



Meadow Landscape with Building  
(2023.42.38)



Rocky Spire with Woman Standing on  
Top (2023.42.39)



Mountain Valley with Building and  
Road (2023.42.40)



Mountain Meadow with Three Saddled  
Horses and Riders (2023.42.41)



Diary of Mary Maddux Greenley  
(2023.42.62)



Switch of Hair (2023.42.94)



Marcus Hines in WWI uniform  
(2023.48.25)



Births and Marriages page from the  
Butler Family Bible (2023.48.26)



Deaths and Memoranda page from the  
Butler Family Bible (2023.48.27)



Oral History Charles and Catherine  
Moore (203.1977)



Andrew Riddle Oral History (204.1978)



Forrest Carhartt Oral History  
(207.1978)



Arvid Muhr Oral History (208.1978)



Frosty Tilton Oral History (209.1978)



Marie Young Oral History (210.1979)



C.B. Aupperle Oral History (211.1979)



Reuben Pitts Oral History (212.1979)



Pavetti & Van Dyke Oral History  
(213.1979)



Program on Folklore (215.1979)



Oral History with Jim Franklin  
(216.1978)



Oral History with Gwen McKee  
(217.1978)



Margaret Golden Oral History  
(218.1978)



Irene Gramlich Oral History  
(219.1979)



Elizabeth McCullah Oral History  
(220.1978)



Bunk Weimer Oral History (221.1979)



Lucille Mahannah Oral History  
(222.1979)



Helen Wilson Oral History (224.1979)



Edward Martin Oral History  
(225.1979)



Oral History Eda Musser (226.1978)



Jean Page Oral History (227.1979)



Jean Urruty Oral History (228.1978)



Dale Luke Oral History (229.1979)



Joe Fox Oral History (230.1979)



Frank Wright Oral History (231.1978)



Oral History Lizzie Anderson  
(233.1979)



Bill Raber Oral History (234.1979)



Marie Young Oral History (237.1979)



Joel & Jenny Brewster Oral History  
(238.1978)



J.W. Latham Oral History (239.1979)



Dr. Addie Maynard Oral History  
(240.1978)



Jean Page Oral History (241.1979)



WJ Pray Oral History (242.1979)



Harvey Smith Oral History (243.1979)



Marie Young Oral History (245.1979)



Art Brodak Oral History (246.1979)



Ethel Hotchkiss Oral History  
(247.1979)



Oral History Ellsworth Guy (248.1979)



A. L. Guerrie Oral History (249.1979)



Grand Junction Depression (25.1971)



Daisy Green Oral History (250.1979)



Alice Olsen Oral History (251.1979)



Merle Winters Oral History (253.1978)



Armand De Beque Oral History  
(254.1979)



Bill Nelson Oral History (255.1981)



Wayne Farley Oral History (256.1979)



Oral History of Morgan Goss  
(257.1979)



Anna McGinley and Mae Plunkett Oral  
History (258.1979)



Howard Hafey Oral History (259.1979)



Growing Fruit In Grand Junction  
(26.1976)





Winifred McCaig Oral History  
(260.1978)



Lee Serna Oral History (261.1979)



Bernice Carney Oral History  
(262.1979)



Grace Kistler Oral History (263.1979)



Rudolph Seibert Oral History  
(264.1979)



Frank Wright Oral History (265.1979)



Arthur Tufly Oral History (266.1979)



Anna McGinley & May Plunkett Oral  
History (267.1979)



Marie Edwards Oral History  
(269.1979)



Carl Gesberg Oral History (270.1979)

Carl Gesberg Oral History [Duplicate]  
(270.19791)



Elizabeth Kisher Oral History  
(271.1979)



Fred Powell Oral History (272.1979)



Connor Shephard Oral History  
(273.1979)



Hubbard & Livingston Oral History  
(274.1979)



Limberg Oral History (275.1979)



Thomas Wedell Oral History  
(276.1989)



Oral History of Anna Gallegos  
(277.1979)



Oscar Jaynes Oral History (278.1979)



Eugene Rowley Oral History  
(279.1979)



Mary Warren Oral History (280.1989)



Alfred Bigum Oral History (281.1979)



Biglin Oral History (283.1979)



Craig & Devine Oral History  
(284.1979)



Edna Brenton Oral History (285.1979)



June and Levi Morse Oral History  
(286.1979)



Gateway History & Cowboy Poetry  
(287.1979)



Lampert Oral History (288.1979)



Louis Balliger Oral History (289.1979)



Walter Gaddy Oral History (290.1979)



Sarah Gowen Oral History (291.1979)



Shults Oral History (292.1979)



Dudley Mitchell Oral History  
(293.1979)



Dr. Matteroli Oral History (294.1979)



Lee Toothaker Oral History (295.1979)



C. H. Buttolph Oral History (296.1979)



Elsie Cockrell Oral History (297.1979)



Virgil & Edithe Hickman Oral History  
(298.1979)



Dudley Mitchell Oral History  
(299.1979)



Bengel Shoe Store (2HA289.4)



Interview with Lucy Ela: Glade Park  
And John Otto (3.1975)



Emma Nagel Oral History (300.1979)



Oral History Bill Raber (301.1979)



Oral History of Sarah Livesay  
(302.1980)



Oral History of Dudley Mitchell  
(303.1978)



Oral History of Dudley Mitchell  
(304.1978)



Oral History of Charles Smelzer  
(306.1979)



Oral History of Margaret Stump  
(307.1980)



Oral History of Rudy and Fannie Ruth  
Susman (308.1980)



Program on Fruita and Interurban  
(310.1980)



Oral History with Josephine Biggs  
(312.1980)



Oral History of Katherine Fuoco  
(313.1979)



Oral History with Ruth Hoffman  
(314.1980)



Oral History of Sarah Mahannah  
(317.1980)



Oral History with Len & Violet  
Haseman (319.1983)



Meeting of Last Squad Club  
(329.1980)



Dairy Industry In Grand Junction  
(33.1975)



Oral History with Glenn McFall  
(331.1980)

Oral History with Glenn McFall  
[Duplicate] (331.19801)



Asunta Mendicelli Oral History  
(350.1980)



Jennie Dixon Oral History (351.1980)



Roy McCoy Oral History (372.1981)



Financial Institutions of Mesa County  
(375.1980)



Loudene Humeston Oral History  
(377.1978)



Earl & Ella Foster Oral History  
(379.1980)



Immigrant From Basque Country  
(38.1975)



Program on Railroads (381.1980)



Program on Architecture (382.1980)



Early Education Program (384.1980)



Oral History Mary A. Cox (385.1980)



John Hart Oral History (387.1980)



Oral History Henry Spomer (389.1980)



Harriet Johnson Oral History  
(391.1980)

Harriet Johnson Oral History  
[Duplicate] (391.19801)



Anna Clark Oral History (392.1980)



John Collier Oral History (396.1980)



Grace Hill Wade Oral History  
(397.1980)

Grace Hill Wade Oral History  
[Duplicate] (397.19801)



Kate Wills Oral History (398.1980)



Julia Harris Oral History (400.1980)



Fruita - Early Settlers (41.1975)



Palisade History And Fruit Growing  
(43.1977)



Development Of Grand Valley  
(Parachute) (44.1977)



Early Day Social Worker (45.1977)

Oral History (458.1981)



History of Jaynes And Borschell  
Families (46.1978)



Armand De Beque Oral History  
(462.1981)



Program on Early Entertainment  
(463.1981)



Wanda and Paul Brechler Oral History  
(464.1981)



Gertrude Rader Oral History  
(465.1981)



Program on the Collbran and Plateau  
Valley Area (469.1981)



Oral History with Bailey & Shaw  
(471.1981)



Walter Simineo Oral History  
(472.1981)



Wayne Aspinall Oral History  
(473.1981)



Carl Dewey Oral History (474.1981)



Albert Phillips Jr. Oral History  
(475.1981)





William Whatley Oral History  
(476.1982)



Ruth Tilton Oral History (477.1982)



Al Look Oral History (479.1981)



Early Palisade (48.1977)



Jo Ferguson Oral History (480.1982)



Emma Conner Oral History (481.1982)



Charlotte Claar Oral History  
(482.1980)



Jo Ferguson Oral History (483.1982)



Roy Dinkins Oral History (484.1981)



Early Black Residents - Oral History  
with Josephine Dickey (49.1977)



Program on George Crawford  
(494.1982)



100 Years of Mesa County Government  
- Panel Presentation (495.1982)



Al Look Oral History (498.1982)



Program on WWI (499.1982)



Fruit Grower And Cattle Man  
(50.1977)



Glen Berry Oral History (507.1982)



Sylvia Ruland Oral History (508.1982)



Early Homesteading And Teaching  
(51.1977)



Hazel Murphey Oral History  
(519.1982)



Homesteading And Family Life  
(52.1977)



Oral History with Josephine Dickey  
(529.1981)



Development Of A Cowboy (53.1977)



Ruth Echternach Oral History  
(531.1982)



Dottie Lamm to Women's Network  
Centennial Luncheon (533.1982)



Molly Stucker Oral History (536.2002)



Influential People And Leaders  
(54.1976)



Wayne Aspinall Oral History  
(548.1982)



Grand Junction's First Radio &  
Television Stations (57.1975)



Sheep & Cattle Ranching in Cisco  
(58.1977)



Early Sheep And Cattle Experiences  
(59.1977)



Pioneer Educator And Civic Leader  
(60.1977)



Reminiscences of Mesa County  
Doctors (64.1971)



Early Whitewater (66.1977)



Homestead In Horsethief  
Canyon/Plateau Valley (67.1977)



Prominent Homemaker And Educator  
(68.1977)



Beginnings Of Grand Junction  
(69.1977)

Beginnings Of Grand Junction  
[Duplicate] (69.19771)



Early Life In Fruita (73.1978)



Public Nursing (79.1977)



Early Whitewater Ranch Life (85.1977)



Musician; Sawmill Operator From  
Delta (86.1977)



Early Fruitgrower (87.1977)



Early Grd. Jct. Citizens And Businesses  
(89.1977)



Early Life In Whitewater (97.1977)



A Teacher's Early Life And Friendships  
(98.1977)



Bodice (A922)



Ladies Skirt (A939.2)



Bodice (A975)



Bodice (A999)



Lady's Blouse (B104)



Lady's Blouse (B191)



Child's Blouse (B369)



Lady's Blouse (B40)



Lady's Blouse (B44)



Dress (B59)



Navajo Rug (B614.1)



Lady's Bodice (B65)



Bodice (B67)



Blouse (B76)



Lady's Blouse (B80)



Lady's Blouse (B95L)



Native American Handmade Artifacts  
(C557.1)



Decorated Hide (C557.2)



Decorated Hide (C557.3)



Native American Handmade Artifacts  
(C557.4)



Native American Handmade Artifacts  
(C557.5)



Blouse (D32.1)



Dress (D403)



Blouse (E4)



Dress (E64)



Blouse (E71)



Front  
E75  
Dress (E75)



Ute Prisoner Surrender Tree (F230.1)



Ute Prisoner Surrender Tree (F230.2)



Sugar Beet Factory (F343.1)



Sugar Beet Factory (F343.2)



Sugar Beet Factory (F343.3)



Carpenter excursion (F515.3)



Railroad Conductors, c. 1910-1920  
(F562.1)



Grand Junction Railroad Station &  
Yards, 1900-1920 (F720.57)



Moonlight Time Exposure on Gunnison  
River (F732.2)



Grand Junction High School Football  
Team 1919 (F826.12)

Grand Junction High School Football  
Team 1919 [Duplicate] (F826.121)

Grand Junction High School Football  
Team 1919 [Duplicate] (F826.122)



"Women have the right to vote"  
Advocates (F826.7)



Photograph of Downtown Grand  
Junction (F827.2)



School Bus To Fruita Union High  
School (F879.8)



1919 License Plate Tag (H191)



Black Crochet Purse (H581)



White Purse (X122)



Metal Mesh Purse (X124)