



**Lecture on Spanish Influence in Western Colorado
(135.1977)**



Lecture (136.1976)



Program by Dan Roberts (159.1977)



Reading Diary & Letter (162.1994)



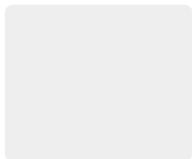
Pictorial History of Grand Junction (182.1978)



Buffalo Bill's Colt Pistol (1979.10.46)



Box (1979.102.2)



Portrait of George Crawford (1979.112.1)



**Photo of the Building of the Grand Valley Headgate
(1979.23.71)**



Hurlburt Family, Parachute Creek (1979.31.1)



Teller Institute: Old Hospital (1979.66.2)



Portrait of Philip Keene Sullivan (1979.79.2)



Grand River channel (Colorado River) and 5th Street Bridge (1980.115.2)



Quinkent (1980.13.14)



Montrose and Ouray Stage Coach (1980.13.181)



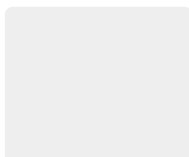
David Wood Freighting Outfit on Dave Wood Road (1980.13.184a)



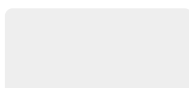
Ox Team Main Street Telluride (1980.13.185)



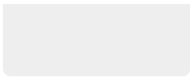
Chipeta and Ouray's Home (1980.13.75)



Doc Shores Letters (1981.115.54)



Doc Shores Letters [Duplicate] (1981.115.541)



**Lest We Forget: A Short History of Early Grand Valley,
Colorado, Originally Called Parachute, Colorado (1982.2.1)**



Brunswick Hotel (1982.213.12)



Grand Junction, 1889 (1982.213.13)



Mount Garfield (1982.213.17)



Boys with donkey (1982.213.22)



Stage Coach at the Beaumont (1982.213.23)



Short Cape (1982.97.21)



IOOF Chair (1983.162.4)



Thomas B Crawford Sheep Herd (1983.54.1)



Sheep at Goslen Brothers camp (1983.54.2)



Sheep Ranch (1983.54.3)



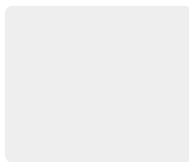
Sheep Ranch (1983.54.4)



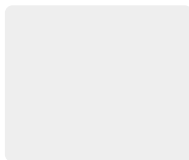
sheep ranch (1983.54.5)



Collection Of Documents Regarding William J.S. Henderson And His Family (1983.66.2)



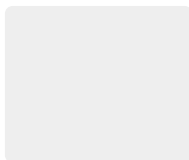
Collection Of Documents Regarding William J.S. Henderson And His Family [Duplicate] (1983.66.21)



Collection Of Documents Regarding William J.S. Henderson And His Family [Duplicate] (1983.66.22)



Photocopy Of 1885 Mesa County Census (1983.92.3)



Marriage Records Mesa County, Colorado (1984.9.1)



A Canyon, Coal, and A Railroad: The Story of Carpenter, Colorado (1985.114.1)



**Daniel and Hannah Aupperle with Two Children
(1988.40.75)**



Photo of George and Kate Aupperle (1988.40.76)



**Metal Token. The Tibbs Cigar Co. Grand Junction Colo.
(1989.124.481)**



Photo of town offices in Grand Junction (1990.10.66)



Photos of First School House, Grand Junction (1990.8.17)



Lucy Ela (1991.125.8)



Red/Gray Wedding Dress (1993.74.1-2)



Woman's Relief Corp Medal (1995.105.1)



**Early Day Music and Orchestra and the Ladies' Band
Manuscript (1995.72.13)**



Engines 267, 287, 260 (1997.8.27)



Abstract of Title (2001.49.1)



"Alfred Packer" by Jack Murray (2002.5.4)



"Packer Court Scene" by Jack Murray (2002.5.6)



President's Medal (2003.17.5)



Mack (2004.44.1000)



The Daily Sentinel Clipping (2004.44.130)



Dean Studio (2004.44.131)



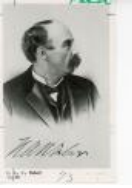
Covered Wagon Travels (2004.44.138)



Hilton Sign (2004.44.140)



Gov. John Evans between 1814-1897 (2004.44.27)



Horace Tabor (2004.44.28)



Frank Dean (2004.44.29)



Nannie Blain (2004.44.30)



Wallace DeBeque (2004.44.32)



Main Street, Looking West (2004.44.790)



Main Street (2004.44.791)



Main Street (2004.44.793)



School Teachers (2004.44.819)



Pioneer Living (2004.44.82)



Pre-Gunnison Tunnel (2004.44.83)



Montrose, Colorado 1883 (2004.44.84)



Picture of the New Castle Stage Coach (2004.44.882)



Randall House Hotel (2004.44.910)



First Grand Junction School (2004.44.913)



Cardiff School (2004.44.92)



First Post office (2004.44.923)



First GJ Hotel (2004.44.927)



GJ's first jail, 1884 (2004.44.928)



Bliss store and Randall House (2004.44.931)



Grand Junction (2004.44.996)



Cobbler's Stand (2007.87.4)



Kent-Mcclintock tombstones (2008.70.3)



Framed portrait of Wallace de Beque (2011.8.39)



Burro and man (2016.4.1.78)



Judge Joseph Ong Portrait (2018.113)



Pipe, Irrigation (2019.44.1)



Mrs. Loyd Files' Mantel Clock (2020.70.1)



Beaded Ute Belt (2020.85.2)



De Beque House (2021.20.1)



The Making of "One Bike" Opera (2021.22.1)



Wagon Train (2021.24.72)



38-star flag (2022.10.1)



Portrait of unidentified woman (2023.40.1)



First School Building (2023.40.27)



Denim Bodice (2023.42.92)



Skirt and Jacket Bodice Ensemble (2023.42.93)



Switch of Hair (2023.42.94)



Births and Marriages page from the Butler Family Bible (2023.48.26)



Dr. A.G. Taylor (2HA17.1)



Colorado Avenue, 1882 (2HA324.1)



Fake Hold Up Scene at Rhone Toll Road (2HA63.2)



4th and Main Street, Grand Junction, 1884 (2HA63.3)



Mt. Garfield by Moonlight (2HA63.8)



Early Education Program (384.1980)



Program on Early Entertainment (463.1981)



Program on George Crawford (494.1982)



100 Years of Mesa County Government - Panel Presentation (495.1982)



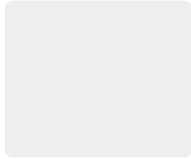
Ice skate blades (A167)



Dutch Oven (A517)



Railroad Spike (Hagerman Tunnel) (A583)



Butter Churn (B423)



Blue Dress (two piece) (B496.1)



Shawl (B496.2)



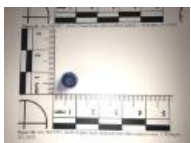
Hat (B496.3)



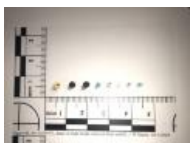
Reticule (coin purse) (B496.4)



Baseball Counter (C766)



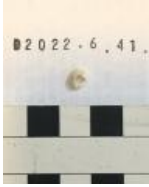
Blue Glass Bead (D2022.1.2)



8 Beads (D2022.1.3)



Shell bead (D2022.6.40)



Shell bead (D2022.6.41)



Wrapper/Nightgown (D239)



First Railroad Over River (F0516 B)



Lowell school / jail (F0520)



View of Mesa Lake (F186.1)



Mesa Creek on the Trail to Mesa Lake (F186.2)



4th and Main (F189)



Masked Men on Horseback at 4th of July Parade (F198.1)



July 4 Parade Float (F198.2)



4th of July Drum and Flute Band (F198.3)



4th of July Marching Military Group (F198.4)



4th of July Brass Band (F198.5)



Powerhouse of First Water Works (F224.1)



Powerhouse of First Water Works [Duplicate] (F224.2)



Powerhouse of First Water Works (F224.3)



Fake Hold Up Scene at Rhone Toll Road (F229.1)



Ute Prisoner Surrender Tree (F230.1)



Ute Prisoner Surrender Tree (F230.2)



Unidentified Man, Woman, and Child (F248.1)



Unidentified Woman (F256.1)



Stagecoach in Front of Brunswick Hotel (F339.1)



Stagecoach in Front of Brunswick Hotel (F339.2)



Stagecoach in Front of Brunswick Hotel (F339.3)



Randall House, 1884 (F346.1)



Randall House, 1882 (F346.2)



Ute Camping Trip (F347.1)



Main Street, 1884 (F348.1)



Main Street, 1884 (F348.2)



Grand Junction's First School (F349.1)



Grand Junction's First School (F349.2)



Grand Junction's Second School (F360.1)



Grand Junction's Second School (F360.2)



Main Street, Looking West [1882] (F364.1)



Grand Junction's First Post Office (F369.1)



View of Grand Junction from 7th and Ouray, 1889 (F377.3)



Grand Junction, c.1887 (F378.1)



Second Grand Junction School (F383.1)



First Grand Junction Hotel (F389.1)



Teller Institute Band (F473.2)



Carpenter excursion (F515.3)



Group Photo Bookcliff Railroad Train Station (F515.6)



Old County Jail (F520.1)



First Hotel Built in Grand Junction (F520.2)



Ute Indian Delegation to Washington D.C. (F626.1)



Ute Indian Delegation to Washington D.C. (F626.2)



Ute Indian Delegation to Washington D.C. (F626.3)



Ute Indian Delegation to Washington D.C. (F626.4)



Asa Palmer Jr. and Elizabeth Mary Tilson Wedding Picture (F712.2)



Lulu Lee in Class (F720.16)



Mr. Myers (F720.26)



Johnson Vaughn and Wife (F720.35)



Rosa Woody (F720.36)



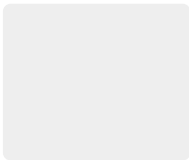
Portrait of Actress Emma Carson (F720.4)



Grand Junction Railroad Station (F720.59)



Grand Junction Plat Map, c. 1882 (F754.1)



Dry Creek Cowboys at Dinner (F801.1)



Panoramic View of Grand Junction, Looking South from 7th and Ouray, 1889 (F832.1)



Harrington, Bliss & Co. (F833.1)



C.P. Bliss Mercantile Company (F833.2)



Main Street, 1884 (F839.1)



Dutch Gin Bottle (H442)



Lucy Drake Ela Wedding Dress (H545)



Velvet Flocked Bodice (H564A)



Protohistoric projectile point (S2022.77.16)
