



Portrait of Lois S. Craven on a Trifold Mount (1979.30.3)



Dinosaur Print found near Telluride (1979.46.12)



First School Buses, Clifton (1979.46.6)



Aerial photo of the Colorado River (1981.115.164)



Early GJ aerial, Colorado River (1981.115.173)



Mr. and Mrs. Harris Kissell (1983.54.12)



child (1983.54.13)



John G. McKinney (1983.54.14)



Ruth McKinney (1983.54.18)



Ruth McKinney (1983.54.19)



Ruth McKinney (1983.54.20)



Photo of Dr. Herman R. Bull Sr. (1987.86.6)



Grand Junction Fire Department with Fire Engine (1990.58.24)



Dennett Keith Ela (1991.125.4)



The Avalon Theatre postcard (1992.93.47)



Swimming at Moyer Natatorium (1992.93.50)



Grand River Valley Railway (1995.82.2)



Grand River Valley Railway (1995.82.8)



Electric at Outlaw Mine (1997.17.23)



Bridge on Dolores River (1997.17.38)



American Crate & Basket Co. (1998.18.1)



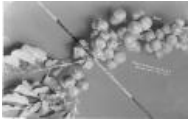
YMCA Building (1999.44.10)



Apples (1999.44.11)



Apples (1999.44.12)



Apples (1999.44.13)



Mt. Garfield (1999.44.14)



orchards (1999.44.15)



Smudge pots (1999.44.16)



"Alfred Packer" by Jack Murray (2002.5.4)



Danford N. Wheeler (2004.44.1015)



Joe Keifer (2004.44.1020)



Frank Kiefer (2004.44.1021)



Four Horsemen (2004.44.1033)



Sen. Henry M. Teller (2004.44.1040)



Rep. Edward T. Taylor (2004.44.1041)



President William Howard Taft (2004.44.1042)



Mabel Skinner, Apple Queen (2004.44.1044)



William McGinley (2004.44.1061)



Chief McCook (2004.44.1062)



J. Henry Allen (2004.44.1082)



Frank Dean (2004.44.1084)



Frank Dean (2004.44.1085)



**Chief McCook, Frank Dean, and Chief Atchee
(2004.44.1087)**



World Series (2004.44.1118)



Dean Studio (2004.44.131)



Walter Walker (2004.44.207)



First Shovel at Highline Canal (2004.44.217)



Highline canal (2004.44.218)



Mt. Fisher (2004.44.219)



Camp Mack (2004.44.220)



Highline Camp (2004.44.221)



Steam shovel at canal (2004.44.222)



Highline canal overseer (2004.44.223)



Siphon Highline Canal (2004.44.224)



Spillway (2004.44.225)



Spillway Camp (2004.44.226)



Frank Dean (2004.44.29)



Soup eaters (2004.44.39)



Soup Eaters (2004.44.40)



Soup Eaters (2004.44.41)



Soup Eaters (2004.44.42)



Soup Eaters (2004.44.43)



Soup Eaters (2004.44.44)



Soup Eaters (2004.44.45)



Soup Eaters (2004.44.46)



Soup Eaters (2004.44.47)



Soup Eaters (2004.44.48)



Soup Eaters (2004.44.49)



Soup Eaters (2004.44.50)



Soup Eaters (2004.44.51)



Soup Eaters (2004.44.52)



Soup Eaters (2004.44.53)



Soup Eaters (2004.44.54)



Soup Eaters (2004.44.55)



Soup Eaters Children (2004.44.56)



Soup Eaters (2004.44.57)



Soup Eaters (2004.44.58)



Soup Eaters (2004.44.59)



Soupeaters, kids and their toys (2004.44.60)



Soupeaters Children (2004.44.61)



Soupeaters Collage (2004.44.62)



Post Election Day 1936 (2004.44.63)



World Series (2004.44.64.1)



World Series (2004.44.64.8)



World Series (2004.44.65)



World Series Crowd (2004.44.66)



World Series Crowd (2004.44.67)



Crowd at World Series (2004.44.68)



Crowd at World Series (2004.44.69)



World Series Crowd (2004.44.70)



Fifth Street (2004.44.748)



Fifth Street (2004.44.749)



Fifth Street (2004.44.750)



Fifth Street (2004.44.752)



aerial view of downtown GJ (2004.44.776)



Mesa County Grand Jury (2004.44.818)



Frank Dean family (2004.44.830)



Main Street Night Scene (2004.44.885)



Avalon Theatre (2004.44.886)



Avalon theatre (2004.44.887)



Avalon Theatre (2004.44.888)



Avalon (2004.44.889)



Avalon (2004.44.890)



Avalon (2004.44.891)



World Series (2004.44.898)



The Daily Sentinel (2004.44.900)



World Series (2004.44.901)



GJ Fire house & float (2004.44.934)



Highline canal workmen (2004.44.989)



Lincoln Park Barn (2007.74.16)



Rural Carriers in Parade, July 4, 1912 (2008.1.1)



Opening Day at Moyer Natatorium (2008.25.1)



Frank Dean (2021.24.34)



Portrait of a woman (2021.24.45)



Howard Taft's GJ visit (2021.24.75)



Dean Studio Table (2022.3.1)



Dean Studio Child's Chair (2022.3.2)



Carpenter, CO (2022.4.1)



Train and boxcars at a town. (2022.4.10)



View from the Book Cliff Mine (2022.4.2)



Little Book Cliff Railroad in Carpenter (2022.4.3)



The town of Carpenter (2022.4.4)



Book Cliff Mine Entrance (2022.4.5)



A view from the Little Book Cliff Locomotive (2022.4.6)



The Little Book Cliff train and tracks stopped in between Carpenter and Grand Junction. (2022.4.7)



Little Book Cliff Mine & Carpenter (2022.4.8)



View of the Little Book Cliff en route to the Book Cliffs. (2022.4.9)



Portrait of unidentified woman (2023.40.1)



Photo of a girl and her apples (2023.40.10)



Boy with cherries at Knight's Orchard (2023.40.11)



Orchard Scene (2023.40.15)



Grape scene (2023.40.16)



Peaches (2023.40.19)



Grape Scene (2023.40.23)



Photo of a young woman (2023.40.25)



Onions from the Mile High Seed Co. (2023.40.26)



Trout from Cebolla, CO (2023.40.28)



Portrait of an Older Woman (2023.40.29)



Graduating class of 1905 (GJHS) (2023.40.3)



Portrait of an older woman (2023.40.30)



Portrait of a young woman (2023.40.31)



Portrait of a young woman (2023.40.32)



Dean Studio (2023.40.37)



Frank Dean Studio (2023.40.4)



Portrait of an Unidentified Man (2023.40.40)



Agriculture Scene of Valley (2023.40.5)



Photograph of the Four Horsemen (2HA17.2)



The Four Horseman Portrait (2HA17.3)



Portrait of Unidentified man (2HA17.4)



Book Cliff Mine with train cars (2Ha324.2)



Molly Stucker Oral History (536.2002)



Hand Tinted Photo of Independence Monument (B807)



Glen Erin Ranch, Custer SD (F305.1)



Grand Junction High School, 1920 (F397.1)



Ute Indians, c. 1900 (F469.1)



World War I Recruits, 1917 (F470.1)



John F. Moore (F524.1)



Frank F. Moore (F524.2)



Four Generations of Moores (F524.3)



Catherine Moore High School Graduation (F524.4)



Atchee, Ute Chief, Brother of Chipeta (F563.1)



Negative of Frank and Lucy Dean (F602.1)



Child in Indian Headdress (F602.13)



Cold Shivers Point (F602.15)



Paula Henrietta Dean (F602.34)



Preston Dean (F602.5)



Land's End from Skyway Drive (F602.9)



Main Street, 1907 (F802.1)



Grand Junction Mandolin Club (F831.1)



Canon Block, c. 1900 (F922.1)
